



**All Round  
Supplies®**

# ARS Link

*Quarterly news  
to keep you informed*

Issue 19 June | July | August 2013

## Equipotential bonded work area for HV cable jointing

Recently, Endeavour Energy released a Technical Bulletin – TB0115 to specify the minimum requirements for creating a safe equipotential bonded work area for HV cable jointing. The bulletin discusses the issue that cable jointers and associated staff can be exposed to hazardous voltages due to conductive, inductive and capacitive effects, even when the cables to be worked on have been de-energised and earthed. The purpose of this equipotential bonded work area is to minimise hazardous touch voltages that could be present under abnormal conditions.

This procedure takes effect from 1st January 2013 for all HV cable

jointing works, and will be included in Substation Design Instruction SDI 100 - Distribution earthing design, construction and test, currently under review. This requirement will also be included in relevant work method statements (SWMS).

The bulletin contains specific procedures for straight through joints and terminations and also includes details of pre-use inspection, periodic inspection and testing of portable earthing, short circuiting and bonding equipment.

**Contact your nearest All Round Supplies branch for a copy of this bulletin and also the kits available.**

**ARS Code 06905** - Equipotential Earth Mat, 1.5m x 1.5m with 1.5m flexible cable and earth clamp.

**ARS Code 06906** - Fault Current Bypass Cable Lead Set for Equipotential Earth Mat. 2 x 3m 95mm<sup>2</sup> Cu flexible cables with clamps - twin lead bridge device.

*Fault current bypass cable assembly after connection to equipotential earth mat.*



## Have you got our updated All Round Supplies contact details?

### Head Office

PO Box 485 Casula Mall NSW 2170

**P:** 02 9426 6300 | **F:** 02 9426 6390

**Accounts:** [accounts@all-round-supplies.com.au](mailto:accounts@all-round-supplies.com.au)

### Power Products

**Manager:** Neil Emtage

13 Progress Circuit, Prestons NSW 2170

**P:** 1300 799 584 | **F:** 02 9426 6390

### Sydney Branch

**Branch Manager:** Sean Osborne

**BDM:** Glenn Rochaix

**Internal Sales:** Suzie Petrovich and Donna Campbell

13 Progress Circuit, Prestons NSW 2170

**P:** 02 9426 6350 | **F:** 02 9426 6399

[Sydney@all-round-supplies.com.au](mailto:Sydney@all-round-supplies.com.au)

### Newcastle Branch

**Branch Manager:** Michele Hellyer

**BDM:** Ben Hillard

**Internal Sales:** Johanna Peters

Unit 2, 6 Babilla Close, Beresfield NSW 2322

**P:** 02 4928 5800 | **F:** 02 4928 5899

[Newcastle@all-round-supplies.com.au](mailto:Newcastle@all-round-supplies.com.au)



### Nowra Branch

**Branch Manager:** Bruce Matthews

**BDM:** Jason Bassett

**Internal Sales:** Kayla Howard

23 Cumberland Ave, South Nowra NSW 2541

**P:** 02 4421 5000 | **F:** 02 4421 5099

[Nowra@all-round-supplies.com.au](mailto:Nowra@all-round-supplies.com.au)

### Darwin Branch

**Branch Manager:** Phil Baily

3/8 Albatross Street, Winnellie NT 0820

**P:** 08 8947 5300 | **F:** 08 8947 6910

[Darwin@all-round-supplies.com.au](mailto:Darwin@all-round-supplies.com.au)

**Electrical  
Infrastructure  
Products**

**Green Energy  
Products**

**Power  
Products**

**More Inside...** Supporting Nexans Olex Golf Day, Safety Update, Nowra's NEW Showroom, NECA News and more...

# ARS Supports Nexans Olex Golf Day for Charity

All Round Supplies (ARS) once again supported the Nexans Olex Memorial Golf Day, held at Twin Creeks Golf and Country Club on the 10th of May 2013. The charity that Nexans Olex Golf Day supported this year was Camp Quality raising a total of \$4000.

There was an impressive attendance, of over 100 customers which included Contractors, ASPs and All Round Supplies' Earl Palfrey (Managing Director), Glenn Rochaix (Sydney BDM), Ben Hillard (Newcastle BDM) and Jason Bassett (Nowra BDM).



The team running second was Ben Hillard, Matthew Keith, Peter Hocking and Kurt Schumereier. Ben Hillard was nearest to the pin on the 14th hole, and was longest drive on the 15th hole and Matthew Keith was longest drive on the 16th hole.

## A little bit about Camp Quality:

Camp Quality is a children's family cancer charity. Their purpose is to create a better life for every child and their family living with cancer in Australia.



## Are you using the correct style of streetlight fuse carrier and fuse cartridge?

Endeavour Energy TB-0126 bulletin has been issued to overcome confusion over the correct style of fuse carriers, the size of fuse cartridges to be used in columns and pillars and the correct installation methods.

Endeavour Energy is advising ASPs of the following:

- Lighting Construction Instruction (LCI0001) states in clause 5.1.10 Column fuse – "A 10A fuse (ARS code 06315) shall be installed between the terminal block and luminaire, on the active conductor, as shown in Drawing no. 280143" and in clause 5.1.11 Fuses in a low voltage pillar or enlarged base column – "Where a streetlight (or streetlights) is supplied from LV mains within a pillar, a 16A fuse (ARS code 02654) shall be installed in the pillar, as in Drawing no. 280143."

- Only the new style fuse carrier shall be used in both LV pillars and SL columns (ARS code 05995). Refer to amended drawing 280143 (am.D). The cross sectional area of the flexible tail has been increased to 10mm<sup>2</sup>, while the length has been reduced to 250mm.

- The fuse carriers with a straight arm, right angled arm, and fuse carriers that carry a 4mm<sup>2</sup> flexible tail shall not be used on the Endeavour Energy Network after 1st June 2013. These styles are to be made obsolete and all existing stock must be exhausted by 31st May 2013.

**Contact your nearest All Round Supplies on 1300 087 579 for a copy of this bulletin and also the products available which are illustrated below.**



10A FUSE, LINK  
CARTRIDGE  
ARS Code 06315



16A FUSE, LINK  
CARTRIDGE  
ARS Code 02654



FUSE HOLDER,  
VERTICAL WITH  
TAIL FOR SL  
ARS Code 05995

## Contractors BBQ

Newcastle Branch are inviting you to our Contractor Breakfast BBQ on the 5th August! All are welcome to come.

**Starts at 7am!**

**Location:**  
Newcastle Branch  
Unit 2, 6 Babilla Cl  
BERESFIELD  
NSW 2322



**Look forward to seeing you there...**

# CABLE SHORT LENGTHS LIST

**SAVE SAVE SAVE!**

**List Updated Monthly**

## REGISTER TODAY!

Send an email to [marketing@all-round-supplies.com.au](mailto:marketing@all-round-supplies.com.au) with the subject line 'Cable Shorts' to receive the monthly cable short cuts promotion or call your local branch for a list.

# NEW Nowra Showroom

By Bruce Matthews (Nowra Branch Manager)

Nowra Branch has recently upgraded their showroom, featuring an extensive range of products, tools and safety equipment, ideal for contractors working on Electrical Infrastructure networks.

We have introduced a larger range of all your Utility Approved Safety Products that is required for your job which includes: gloves, belts, tiger tails, cover guards, etc.

Nowra Branch keeps a range of all sizes of 1000V gloves and outer gloves to meet your requirements under ASP regulations, along with some 650V sizes as well.

We also have a full range of cable stripping tools, crimpers and ancillaries on display in our showroom.

**Come in and see our upgraded store when you're in town next...** We are located at 23 Cumberland Ave, Sth Nowra NSW 2541



## SAFETY UPDATE

brought to you by Endeavour Energy

### DE-ENERGISED MAINS FALL UNCONTROLLED ONTO LIVE LV MAINS

#### Incident details:

Old style 33kV insulator string rusted solid with connection hook becoming dislodged when contacted by EWP. Workers were repositioning a safety sling when the corner of the EWP made contact with the rusted insulator string. The insulator string came dislodged during this action causing the 33kV mains to fall uncontrolled contacting live LV below.

#### What has been done:

- CAM investigation has been completed
- Members of the Transmission Mains Group have attended tool box talks
- A review of SWMS and WPI to ensure Best Practice Methods are employed.

#### Actions to be taken:

- Use a WHRA to identify risks and implement controls.
- Identify older style insulator string and assess condition prior to commencing work.
- Refer to WRG0604 when working on HV mains above Live LV mains.
- Ensure Observer is present at all times in accordance with SWMS 1.015.

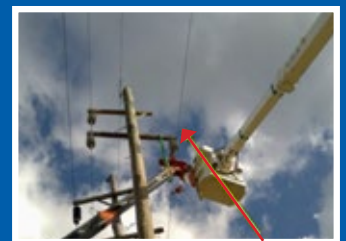
#### Procedures, WPIs or SWMS to adhere to:

- WHRA – Work Site Hazard and Risk Assessment
- Endeavour Electrical Safety Rules
- SWMS 1.015 Working at Heights
- WRG 0604 Disconnection of Aerial Conductors Located over Live HV Mains

For more information, refer to Endeavour Energy Hazard Alert No. 14-13. Issued: 22 March 2013



Safety Sling Method(WRG0604)



Conductor Reinstated

## Notice board:

- **Pole Top Rescue Kits NOW AVAILABLE!** ASK IN-STORE FOR MORE DETAILS.
- **ARS and NECA News are now working together to bring ASP news in every edition of the NECA bi-monthly magazine.** The publication is distributed by the NECA office to approximately 3000 NECA Members, electrical and communications contractors, industry suppliers, government agencies, training providers and other industry stakeholders across Queensland, NSW & the ACT.
- **ARS joined EnPower Solutions to co-sponsor the Albury Gold Cup held in March.**
- **Bare Conductor Accessories and Pole Mounted Transformer catalogues OUT NOW!** Ask in-store for your copy.

#### Welcoming Johanna and Eoghan to our Newcastle Branch

ARS welcomes our new Internal Sales Person in Newcastle, Johanna Peters and our new Storeman/Driver Eoghan Lofts.



#### Welcoming Donna to our Sydney Branch

ARS welcomes our new Internal Sales Assistant Person in Sydney, Donna Campbell.





When starting a business are you concerned about limited liability i.e. that any debts or liabilities of the business cannot be used to attach your family home or other personal assets? If so, then the usual business structures would be either to form a company with limited liability or trade through a family discretionary trust. Importantly, a family discretionary trust can offer other advantages over a company. We shall highlight these in this article.

## Summary of the usual different business entities:

### 1. Sole Proprietor (Sole Trader):

This is where you buy the business on your own and not jointly or through an incorporated structure. You are the owner. Sole proprietors, like partners, are personally liable for debts of the business so you may lose your house or other assets if the business is sued for trading debts or mistakes made on the job.

### 2. Partnership

A partnership is not a separate legal entity. You and your partner or partners would become the joint owners, at law, of all of the assets of the business and become jointly and severally liable for the expenses incurred in the course of carrying on that business.

### 3. Company

A company is a separate legal entity. This means that the company would become the owner of all of the assets of the business and become liable for the expenses incurred by the directors of the company which are incurred in the course of carrying on that business. The directors can however become liable if, for example, they sign any personal guarantees.

### 4. Discretionary Trust

A trust comes into existence where a person (a trustee) holds assets for the benefit of others (called beneficiaries). A trustee therefore is the person who enters into transactions on behalf of the trust and liable for the debts incurred by the trust (but is entitled to be reimbursed from the assets of the trust). It is therefore customary for the trustee to be a company.

## Advantages of trusts over companies below:

1. Ability to distribute income on a discretionary basis to a wider group of people other than the shareholders and the ability to vary the proportions paid to these people annually.
2. Administratively simpler to distribute profits in trusts. Rather than profits being taxed in the company at a 30% tax rate, they can be taxed directly to beneficiaries who are often on lower rates of income tax. This is particularly important for small businesses.
3. Ability to potentially save on employment on-costs by taking profits

as trust distributions rather than taking all income as directors' fees or salaries.

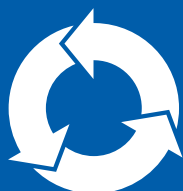
4. Potential capital gains tax advantages when the business is sold, i.e. small business capital tax concessions are usually simpler using a trust rather than a company.

## The disadvantages of trusts over companies:

1. Running a business through a trust is usually suitable for family run businesses as there are no individual fixed ownership interests such as shares. Alternative business structures should be considered such as companies or a unit trust
2. The beneficiaries of a discretionary trust do not have the power to enforce distribution unless the trustee's discretion is exercised.
3. Where all potential beneficiaries of trust distribution have a higher than a 30% marginal rate of tax and the business wants to retain profits for further expansion, as in the short term tax payable may be higher than the 30% flat rate of tax paid by the company.

**Suitable advice for your particular set of circumstances can be obtained from NECA.**

Should you wish to set up a discretionary trust or require any advice or clarity on the above please contact Andrew Blencowe (Solicitor and Chartered Accountant) or Stafford Poyser at Neca Legal at [stafford.poyser@neca.asn.au](mailto:stafford.poyser@neca.asn.au) or call (02) 9744 1099.



**All Round  
Supplies®**

**1300 087 579**

Sydney  
13 Progress Cct  
PRESTONS  
NSW 2170

Newcastle  
Unit 2, 6 Babilla Cl  
BERESFIELD  
NSW 2322

Nowra  
23 Cumberland Ave  
STH NOWRA  
NSW 2541

Darwin  
3/8 Albatross St  
WINNELLIE  
NT 0820

**all-round-supplies.com.au**