



**All Round  
Supplies®**



# UTILITY LINK

Issue 2, Mar - Apr 2006

## Nowra Branch Now Open



**The Nowra team L to R -  
Keith Flynn, Bruce Matthews,  
Gary Creer**

All Round Supplies now has a branch located in Jellicoe Street, South Nowra. Our new south coast branch will stock a full range of low voltage and medium voltage materials including cable and cable accessories. Materials approved for use on both the Integral Energy and Country Energy networks will be stocked in Nowra. The Nowra branch can be contacted on; Ph: (02) 4421 5000, Fax: (02) 4421 5099 or by e-mail, [nowra@all-round-supplies.com.au](mailto:nowra@all-round-supplies.com.au).



### *Inside this issue:*

Nowra Branch Now Open	<b>1</b>
Integral Energy LV Bushing Covers	<b>1</b>
The Soaring Price Of Copper	<b>2</b>
Country Energy "ARsemblies"	<b>3</b>
Network Standards Updates	<b>4</b>
New Products Available	<b>4</b>

## Integral Energy LV Bushing Covers



**03353 - LV Tx Bushing Cover**

The need to use emerclad paint on low voltage ground transformer bushings is no more. Specially designed bushing covers are now available for use in both Integral Energy padmount substations and indoor substations on both 1000kVA and 1500kVA transformers, (a different cover is used for 500kVA transformers). The covers are easy to install, they simply slip over the bushings after the cables have been installed and are secured with cable ties.



**Bushing Cover in lieu of Emerclad**



## The Soaring Price Of Copper

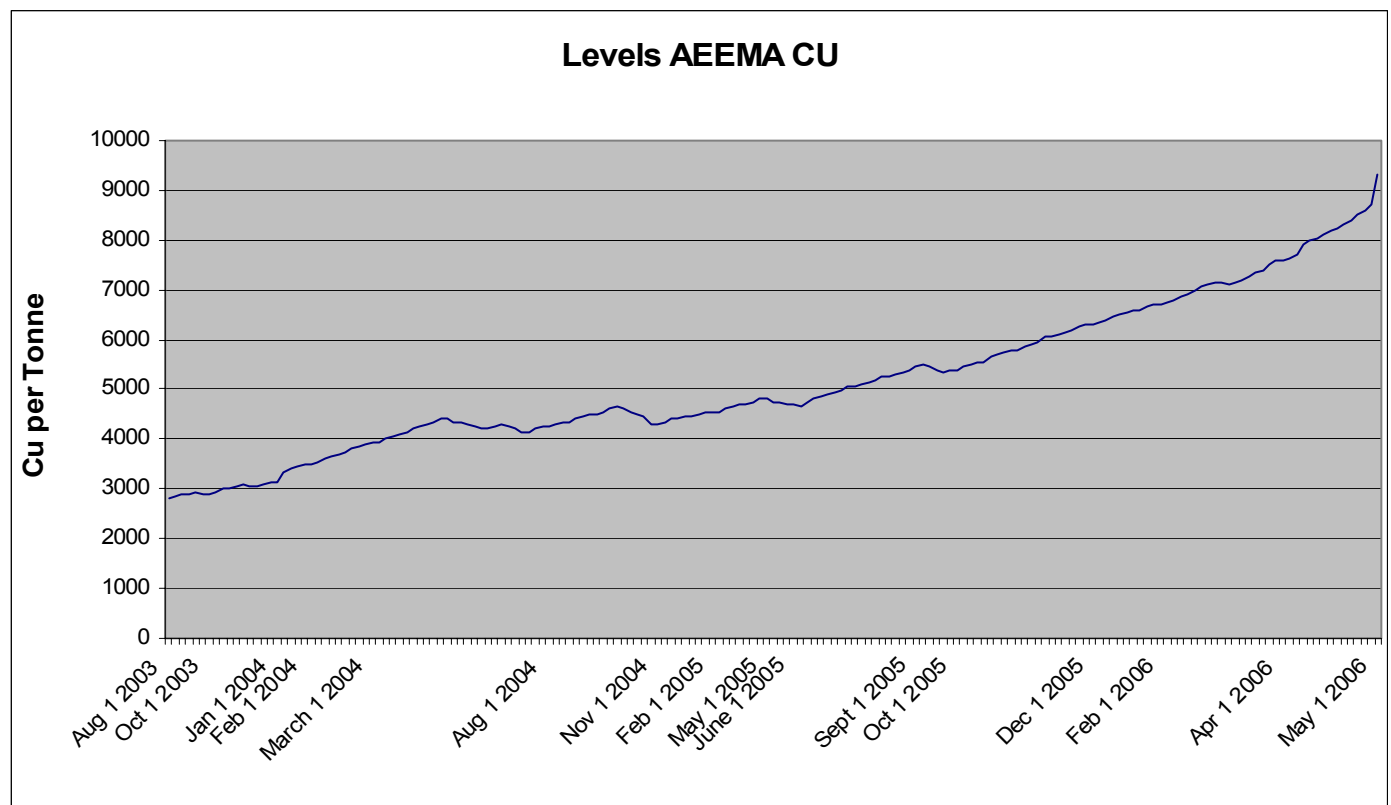
Since January 2005 the price of copper has more than doubled, rising from AU \$4,450.00 MT to AU \$9,300.00 MT at 1st May 2006, this is partly because copper production has still not been able to keep up with demand, despite huge copper mine expansions around the world.

According to the International Copper Study Group, refined copper production rose 8.4 per cent to 17.1 million tonnes last year, but global copper usage rose 5.3 per cent to 17.4 million tonnes. Production this year is forecast to rise 5.6 per cent to 18.1 million tonnes, still below expected copper consumption of 18.2 million tonnes.

The graph below illustrates the rising price copper, values as listed by Australian Electrical and Electronic Manufacturers Association. Wire and cable products account for as much as 75% of copper consumption and the constant rise is being reflected in the increasing price of copper electrical power cables.



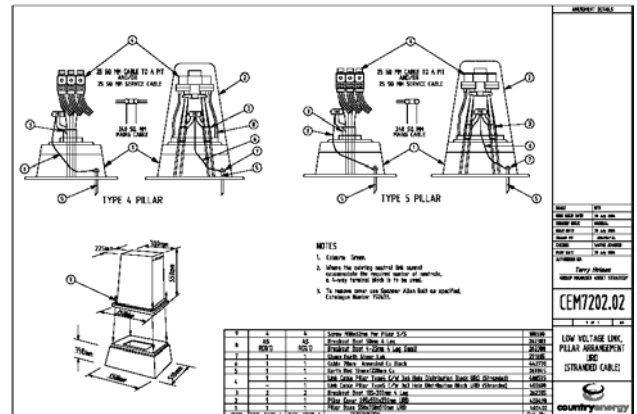
One of the worlds largest open cut copper mines in Chile





## Country Energy “ARSemblies”

An All Round Supplies “ARAssembly” is a pre-packaged kit containing materials required to complete a specific utility construction or design. Together with our range of Integral Energy and Energy Australia “ARSemblies”, All Round Supplies now offers these kits for Country Energy designs. This means by simply quoting a Country Energy drawing number, eg. CEM7202.02.04 you will be able to receive a quote or purchase the materials required to complete this construction. Items not included in our “ARSemblies” are those that are specific to a particular conductor, eg. Preformed deadends for bare overhead conductors, these items are sold separately. If you have any questions or would like further information about any of the products or services offered by All Round Supplies please contact your closest branch.



## Recent Integral Energy Technical Bulletin Releases

Mar 30, 2006 TB 0013A Modifications to Tappat 3-way industrial/commercial pillar kits  
Feb 08, 2006 TB 0020A Amendment to MCI 0006

All technical bulletins issued by Integral Energy are available on the ASP website.

## Recent Integral Energy Network Standards Updates

### Amendments

EMS0007 Waste management  
MMI0022 Routine maintenance of low voltage distribution panels in pillars and streetlight columns  
SDI510 Buildings  
SDI516 Earthing in transmission/zone substations and switching stations  
SDI533 Toilets  
SMI111 Selection of distribution transformers for maintenance  
SMI156 Breathers  
SMI204 Isolators (disconnectors), links and air break switches

### Drawings

280143 Public lighting PE cell controlled SL termination arrangement  
280144 Public lighting SLCP controlled SL connection arrangement with consumers mains  
280146 Public lighting PE cell controlled 1ph & 3ph SL only connection arrangement  
280255 Public lighting construction standards SL only connection arrangement end of CCT

All network standards updates issued by Integral Energy are available on the ASP website.

## Recent Energy Australia Customer Installation Advice

Mar 20, 2006 CIA 1305 New editions of ES 9 & ES 10, March 2006  
Feb 23, 2006 CIA 1304 Amendments to ES 3 metering installations, June 2004

All CIA documents issued by Energy Australia are available on their website.





**All Round  
Supplies®**



Page 4

## Recent Energy Australia Network Standards Advice

Mar 28, 2006 NSA1381	Amendments to Energy Australia's network standard NUS 199, Safe electrical working on low voltage assets
Mar 28, 2006 NSA1382	Amendments to Energy Australia's network standard NS 0156, Working near or around underground cables, July 1998
Mar 27, 2006 NSA1380	Amendments to Energy Australia's network standard NS 114, Electrical design and construction standards for chamber type substations, February 2006
Mar 03, 2006 NSA1379	Amendments to Energy Australia's network standard NS 0113, Site selection and civil design standards for chamber type substations, October 1997
Feb 23, 2006 NSA1379	Amendments to Energy Australia's network standard NS 0158, Labelling of mains and apparatus, April 2002
Feb 20, 2006 NSA1375	Amendments to Energy Australia's network standard NS 171, Firestopping in substations, May 2004

All NSA documents issued by Energy Australia are available on their website.

## New Products Available From All Round Supplies

### Country Energy Approved Products

ARS	Utility Stockcode & Description	ARS	Utility Stockcode & Description
03470	132650, Crossarm, steel type S4	03468	115274, Bracket, gas switch mounting
03467	404191, 12kV gas switch, horizontal mounted	03466	269820, Shroud, 11kV pole transformer bushing
03465	261165, 33kV pin type vice top insulator	03464	115337, Twisted EDO link bracket
03463	208680, 12/24kV drop out fuse assembly	03462	269316, LV black PVC shroud
03461	231745, 120mm2 bi-metal lug 3 x M12 holes	03459	603780, M20 galvanized steel thimble
03458	134590, Crossarm, steel type S2/S7	03457	132465, Riser, steel type S3-A
03456	132560, Crossarm, steel type S1/S8	03455	115520, Pole transformer support bracket
03454	602190, Stay guard, slit, 22mm x 2m	03453	283922, Coupler 13mm dia SS earth rod
03452	269971, Earth rod 13mm x 1.2m SS	03451	115295, Bracket 160A 1ph LV ABC switch
03450	405225, Switch, 160A 1ph L ABC	03446	269945, Earth rod 13mm x 1.2m Cu
03444	261135, 22kV pin/post insulator long shank	03443	110700, Nail plate 25mm dia hole
03441	101780, Coachscrew M12 x 120mm	03440	291885, Shear-lok connector 13mm rod

### Energy Australia Approved Products

ARS	Utility Stockcode & Description	ARS	Utility Stockcode & Description
03412	73817, single link panel streetlight column	03411	79996, Ragbolt, type 1 streetlight foundation

#### HEAD OFFICE

P.O BOX 485  
CASULA MALL NSW 2170

ph: 02 9826 9416

fax: 02 9826 8566

Info@all-round-supplies.com.au

#### PRESTONS BRANCH

Unit 1, No. 9 Enterprise Circuit  
PRESTONS NSW 2170

ph: 02 9826 9416

fax: 02 9826 8566

prestons@all-round-supplies.com.au

#### NOWRA BRANCH

Unit 3, Lot 1 Jellicoe Street  
SOUTH NOWRA NSW 2541

ph: 02 4421 5000

fax: 02 4421 5099

nowra@all-round-supplies.com.au

[www.all-round-supplies.com.au](http://www.all-round-supplies.com.au)