



All Round
Supplies®

ARS Link

Quarterly news
to keep you informed

Issue 23 August | September | October 2014

New Endeavour Distribution HV Switchgear: Siemens 8DJH

As a result of a tender and to comply with the latest technical requirements of ETS 0068, Siemens 8DJH switchgear has been approved for use on Endeavour Energy's 11kV and 22kV network.

The new switchgear has been demonstrated to a working group of district operators as well as construction and maintenance staff. Trial units have been installed and the new switchgear has started to be supplied in some new padmount substations. Siemens switchgear will be used on all new projects. The use of Safelink switchgear will be restricted to old size 5 and 10

padmounts where the width is a restricting factor.

The switchgear is non-extendable, contains SF6 and is metal clad, touch safe and fault vented. It is rated at 630A load current and 20kA for 1s fault current. A number of initial units will require CTs for the fault indicator to be fitted around the cable during the cable termination process. Future supplies will come with the CT already installed internally.

ASPs will now have to begin installing the new equipment unless arrangements

are agreed with the Manager, Primary Systems prior.

There are very few changes to the current installation process. The main change from Safelink equipment is that all the feeder terminations now utilise screened elbows instead of lugs and boots.

To make the termination easy for contractors installing this switchgear, All Round Supplies has developed a termination kit - A0003.

The kit is suitable for use on all feeders out of the switchgear including the first feeder. All Round Supplies has engineered this kit with only approved materials and the kit can be used on 11kV or 22kV networks, 3core 120-300mm² Aluminium or Copper XLPE Cables. To complete the kit All Round Supplies has included 2 floating clams and a trifurcation kit.

For more information contact your nearest All Round Supplies Branch today.

For the complete Technical Bulletin, refer to Endeavour Energy TB-0159. Issued: 28 February 2014.



Farewell to Phil Baily from our Darwin Branch

Farewell to a valued member of our All Round Supplies family... Phil Baily from our Darwin Branch. Phil has been with All Round Supplies for over five years, and has played an integral role to this organisation through his hard work in successfully managing the Darwin Branch. Phil has made the decision to take the next milestone in his life by retiring and will be travelling for at least six months with his lovely wife.

'As you embark on your journey we wish you all the best and thank you for your years of dedication, enthusiasm and team spirit.'



Electrical
Infrastructure
Products

Green Energy
Products

Power
Products

More Inside... Safety Update, Darwin Cup, ARS Delivery Service, Ausgrid LV Network UGOHs and more...

Did you know...

Tee-shaped connectors (elbows) for use with compact switchgear

The Nexans Euromold, K430TB (24 kV) is a compact medium voltage (MV) tee-shaped connector (elbow) designed specifically for use with compact switchgear and transformers.

Trend towards compact switchgear

The growing trend towards using ever more compact switchgear has resulted in smaller cable boxes, limiting the space available for connectors. Nexans has responded to this challenge by developing its asymmetric tee-shape connectors to create a compact connection solution. This enables two cables to be connected in the same space required for one cable using a traditional non-compact connector. As well as being ideal for all applications where space is a limiting factor, the Nexans compact connectors also enable users to increase the capacity of an existing installation.

EPDM jacket: a key design feature for safety and reliability

The K430TB separable tee-shape bolted connectors are designed to connect polymer-insulated cable to equipment such as switchgear and transformers, they can also be used for cable to cable connections with the appropriate mating parts. A key design feature is the thick (3 mm) EPDM (Ethylene Propylene Diene Monomer) rubber conductive insulation jacket that provides a total safe to touch

screen for personnel safety, this is both more reliable and longer lasting than the painted silicone rubber insulation used in many connectors.

K430TB: almost twice as compact as a traditional connector

The K430TB connector is suitable for voltages from 12 kV up to 24 kV and cable cross-sections from 35 mm² up to 300 mm² (12 and 24 kV). When used as a single connector it is just 183 mm deep, this compares with 255 mm for an equivalent non-compact connector. For double-connection, the epoxy insulating plug can be replaced by the 300PB coupling connector. This enables two cables to be connected in a depth of only 290 mm, compared with 500 mm for a non-compact version.

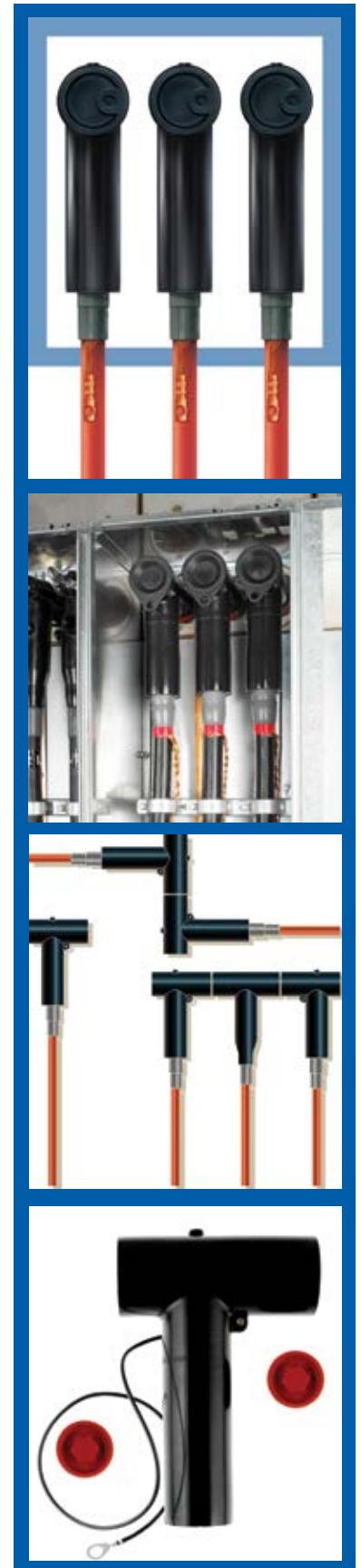
The M430TB (36kV) is also available, suitable for cable cross-sections 50 mm² up to 240 mm².

This compact connector is manufactured by the Nexans Euromold factory Erembodegem, Belgium.

Every compact connector is tested for AC (Alternating Current) withstand and partial discharge before leaving the factory and detailed quality control procedures incorporate perfect traceability, with full visibility of the source and quality of every component.

Contact All Round Supplies for more information on 1300 087 579

australmold
Nexans



CABLE SHORT LENGTHS LIST SAVE SAVE SAVE!

List Updated Monthly

REGISTER TODAY!

Send an email to marketing@all-round-supplies.com.au with the subject line 'Cable Shorts' to receive the monthly cable short cuts promotion or call your local branch for a list.

Hassle Free Nowra Delivery Service!

Nowra Branch offers delivery services and has recently put together a truck delivery schedule of days and locations around the Nowra region.

Nowra Branch also offers FREE DELIVERY to Account Customers. To get this great offer you require the following:

- You have a trading account with ARS
- Orders must be greater than \$500 (excluding GST) for that delivery day
- The delivery is made on the nominated day above
- Excludes unloading for weights greater than 20kg
- Excludes drums of cable that exceed 1,000kg and/or 1.5 metres in diameter
- Excludes power poles (timber, concrete and steel)

Our Darwin Branch now offers a Delivery Service. For more information call (08) 8947 5300.

Ausgrid Low Voltage Network UGOHs!

Mechanical protection used on the LV Network UGOH cables shall be made of galvanised steel and shall be bonded to the neutral of the LV overhead mains.

NOTE: All the existing metal covers (mains and service) supplied from Ausgrid warehouse will not have a drilled hole for the neutral bond connection. At some stage in the future these metal covers will have a hole drilled for the neutral bond connection by the manufacturer.

All of the Ausgrid LV UGOH Assemblies at All Round Supplies have changed to

- Excludes streetlight columns
NB: Deliveries that do not meet the above conditions can be arranged, however a delivery cost will apply.

For more information and for a full schedule of locations and days of delivery, please contact our Nowra Branch: 1 300 087 579



comply with this standard.

Refer to Ausgrid Network Standard Advice No. 1762 - Network Standard NS127. 30/06/2014.

For more information or to speak to one of our representatives, please contact your nearest branch on 1 300 087 579 or email:

Sydney Branch
sydney@all-round-supplies.com.au
Newcastle Branch
newcastle@all-round-supplies.com.au
Nowra Branch
nowra@all-round-supplies.com.au

Approved Ausgrid Streetlight Panels

All Round Supplies is now approved by Ausgrid to supply stockcode 150797 Steel Pole Street lighting Link Panel for use in the Sydney and Central Coast Regions. 610mm x 125mm fitted with 4 way sliding link terminal block and 10A fuse.

Refer to ARS Stockcode B0029

Contact your nearest All Round Supplies Branch for more information.

Ausgrid Network Standard Advice. No.1343-24/07/2014.



RRP
\$220.20
Excl. GST

SAFETY UPDATE

brought to you by Endeavour Energy

RECIPROCATING/SABRE SAWS NOT TO BE USED FOR CUTTING OF DUCTS/CONDUITS WHERE LIVE CABLES MAY EXIST OR U/G SERVICES HAVE NOT BEEN POSITIVELY IDENTIFIED

Causal Factors

An 11kV cable was recently struck by an authorised person, resulting in significant burns to the upper body and hands. An additional ASP employee standing in close proximity also suffered similar injuries. Both employees were subsequently hospitalised. Whilst cutting into an identified empty duct with a reciprocating saw, an adjacent duct containing a live HV cable was struck. This adjacent duct formed an array of 10 existing ducts.

The damaged HV cable was subsequently repaired by Endeavour Energy. An incident investigation has been completed detailing contributing factors and corrective action recommendations. The incident and use of inappropriate tools and work practices was discussed during the December 2013 ASP seminars conducted by Network Connections. A special notice will be added to the ASP website alerting ASPs in respect to windowing of ducts and use of appropriate tools.

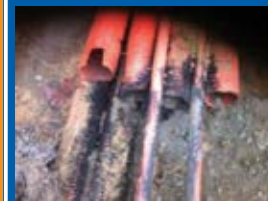
Actions to be taken:

- Endeavour Energy field staff, ASPs and engaged contractors are reminded that particular attention needs to be paid to hazards present when working on LV/HV underground assets that may be potentially "live"
- Work Hazard and Risk Assessments together with appropriate Safe Work Method Statements must identify effective controls to be used in preventing inadvertent contact with live LV/HV mains.
- Follow SWMS and ensure WHRA adequately address specific site conditions.
- Approved tools and procedures must be used when windowing/identifying duct and conduits in restricted spaces
- Approved tools and procedures must be used when cutting conduits or cables in restricted spaces

Procedures, WPIs or SWMS to adhere to:

- WNV1041 – Cable Conduit Windowing and Cutting
- Endeavour Energy Electrical Safety Rules Section 7.4 & 8.6

For more information, refer to Endeavour Energy Hazard Alert No. 02-14. Issued: 3 February 2014



Post incident trench showing exposed ducts. Reciprocating saw used to cut ducts 10 ducts in total with 1 duct obscured



Reciprocating saw used to cut ducts

Notice board:

Welcoming Steve Blair,
our new Territory
Manager in Sydney.



Welcoming Carl Howard,
our new Southern NSW
Territory Manager.



Welcoming Azmeen Hussain,
our new Internal Sales Rep in
Sydney.



Welcoming Jackie Roberts,
our new Internal Sales Rep
in Newcastle.



All Round Supplies at the Darwin Cup Day 2014

By Kerryn Seymour - Operations Supervisor, Darwin

All Round Supplies attended this year's 'Darwin Cup Day 2014' which was a successful day in the glorious Darwin's dry season weather.

This event was a great opportunity to introduce Darwin's new 'Territory Manager' to our Darwin customers and suppliers, Mr Russell Lutzke and his wife Dawn. We welcome Russell on board.

A few coldies and great company made this year's event pleasant and enjoyable. A few dollars spent on many bets kept everybody entertained.

A highlight of the day was Kerryn's colourful hat which had been in the making for a couple of months - got people talking and taking photos.

"The hardest part of doing this hat, was finding the rubber vampire bat, I couldn't find one in my kids toybox so I had to travel to the toy shop", Kerryn said. "I believe I walked out with more than just the bat. Lastly, when one is trying to use a 10mm drill bit when all I wanted was an 8mm - that was interesting. Thankfully I had matches to fill the void".



NSW households to see reduction in electricity charges...

From the 1st July 2014, more than a million New South Wales households will see a reduction in the face value of their electricity charges. This is due to the removal of retail price regulation from the electricity market.

For more information visit the NSW Resources and Energy website
www.resourcesandenergy.nsw.gov.au



**All Round
Supplies®**

1300 087 579

Sydney
13 Progress Cct
PRESTONS
NSW 2170

Newcastle
Unit 2, 6 Babilla Cl
BERESFIELD
NSW 2322

all-round-supplies.com.au

Nowra
23 Cumberland Ave
STH NOWRA
NSW 2541

Darwin
3/8 Albatross St
WINNELLIE
NT 0820