



All Round  
Supplies®

# ARS Link

Quarterly news  
to keep you informed



Issue 24

November | December | January 2014/15

## Did you Know...!

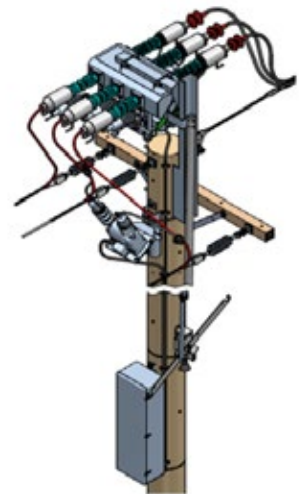
### The Endeavour standard for Load Break Switches has changed.

As the result of a tender, Endeavour Energy has changed the manufacturer and type of Load Break Switch via their technical bulletin issued in September 2014 – TB0166 to ABB's Sectos Manual Load Break Switch for all Endeavour Energy's 11 and 22kV networks. The new switch is currently being rolled out over the network following product demonstrations to some district operators, construction and maintenance staff. Endeavour has also installed trial units at two locations during this process.

All Round Supplies is pleased to announce that we will facilitate the roll out and supply of these new switches to the contractor market across NSW. Stocks of the product will shortly be arriving at All Round Supplies warehouses in Prestons (Sydney) and Nowra, our two branches which cover Endeavour's network area.

All Round Supplies has worked with ABB to develop a **"FREE"** familiarisation/training program which will be held at ABB's Moorebank facilities on Friday the 28th of November, commencing at 8.30am and will run for a few hours.

Contractors are invited to come along and get a hands on view of this new switch along with some valuable information about installing and setting these switches up in the field. ABB's engineers will be in attendance so that contractors can ask questions and get any additional advice that they need.



*If you are interested in coming along, please contact All Round Supplies & reserve your seat:*

Ph: 02 9426 6360

E: [marketing@all-round-supplies.com.au](mailto:marketing@all-round-supplies.com.au)

## Christmas is almost upon us....!



Yes, it is that time of the year again so if you have a project that means you will be working through the break, please let us know as early as possible so that we can plan to have the materials ready for you so that you won't get caught and unable to complete your project.

**All Round Supplies branches will be closed at our normal closing time on Friday the 19th of December and will re-open on Wednesday the 7th of January, 2015 at our normal trading times.**



Electrical  
Infrastructure  
Products



Green Energy  
Products



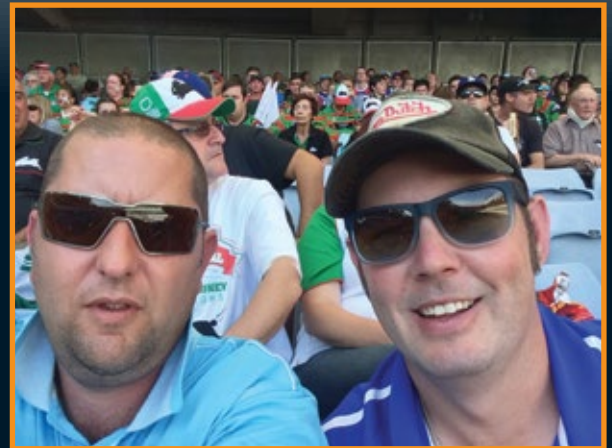
Power  
Products

**More Inside...** Safety Update, Excavation Work, ARS Winners, Joining an Association and more...

# CONGRATULATIONS to the Winners of our Customer Satisfaction Survey Competition...



Photos of some of our winners...



## CABLE SHORT LENGTHS LIST **SAVE SAVE SAVE!**

List Updated Monthly

### REGISTER TODAY!

Send an email to [marketing@all-round-supplies.com.au](mailto:marketing@all-round-supplies.com.au) with the subject line 'Cable Shorts' to receive the monthly cable short cuts promotion or call your local branch for a list.

# Excavation Work - Don't Bury Your Staff

## Background

There have been a number of observations made where excavation works have been carried out in such a manner that may endanger the safety of workers. Excavation failures are particularly dangerous because they may occur quickly, limiting the ability of workers to escape injury or death by suffocation or internal crush injuries.

## Actions

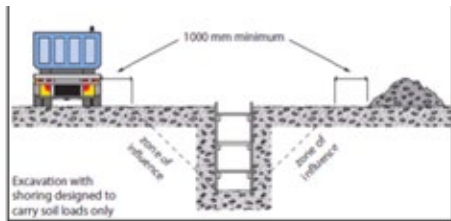
This Technical Bulletin is issued to draw attention to the precautions and procedures detailed in the WorkCover Excavation work code of practice - July 2014. Amendments will also be included in MCI 0006 – The Endeavour Energy Underground distribution construction standards manual.

Before entering an excavation, a WH&RA must be completed to identify and manage risks to the health & safety of workers. Consideration must be given to the site location, ground conditions, depth of excavation and the placement of excavated materials.

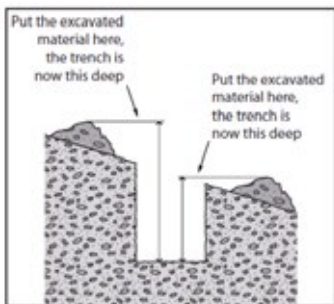
A person who proposes to excavate at least 1.5m deep, must minimise the risk to any person by ensuring that all sides of the trench (or any excavation) are supported by shoring, benching and/or battering.

Attention is also drawn to the following diagrams which are explained in more detail within the code of practice.

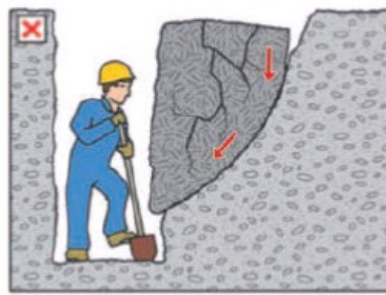
For the complete Technical Bulletin, refer to Endeavour Energy TB-0170. Issued: 2nd October 2014.



**Figure 1:** The depth of the excavation also determines the proximity of vehicles or stock piles of excavated materials



**Figure 2:** The impact of excavated material on the effective excavation depth



**Figure 3:** The excavation wall starts to collapse after seepage along the slipping plane



**Figure 4:** The worker is crushed against the opposite excavation wall by the collapsing ground. It should be noted that the weight of a wedge of sand 1m x 2m is approx. 3 Tonnes.

# SAFETY UPDATE

brought to you by Endeavour Energy

## Essential Energy Incident- Hand caught in chain while lifting pole

### Work being performed

An employee of Essential Energy was attempting to adjust a newly installed pole which had a steel chain sling around it.

The crane was taking the weight of the pole while the employee was twisting the pole by hand to align the crossarm.

### Incident Details

The chain slid or rolled, trapped the employee's left little finger between the chain and the pole. On pulling his hand free, the employee realised that the tip of his finger had been severed and remained inside the glove. The results of Essential Energy's investigation of this incident have recently been shared with Endeavour Energy.

### Causal Factors

- The risk of the chain rolling while lifting a pole was not identified and adequately managed.
- The employee had placed his hand in a position where it was possible for it to get caught in the chain.
- Crew did not consider the alternative sling options to determine the safest method of completing the task.

### Actions to be taken:

- This Safety Bulletin is to be discussed with all workers as a reminder of the risk involved when undertaking lifting tasks.
- Workers are reminded to position themselves and their hands where they should not get caught between a pole and lifting equipment.
- Workers undertaking this task must wear gloves.
- Workers should consider the use of steel wire sling or nylon slings as a safer option for lifting poles.
- Further assessment of the use of appropriate selection of sling types for pole lifts is underway. This process will include consultation with impacted workers.

### Procedures, WPIs or SWMS to adhere to:

- GSY0026-Work Health and Safety Risk Assessment

For more information, refer to Endeavour Energy Safety Bulletin No. 15-14. Issued: 30 September 2014

# Notice board:

Welcoming Russell Lutzke, our new  
Territory Manager in Darwin.



Welcoming Brendan Thomas, our new  
Storeperson in Sydney.



## Why Join Industry Associations? By Russell Lutzke - NT Territory Manager

As Sales representatives, one of our major roles is networking with current and potential customers.

Networking with current customers gives us an insight into their businesses, their specific requirements and their individual personalities. Combine these and we have a good understanding of how we can sustain and grow their value for our company profitability.

### *How do we find the potential new customers?*

As I have been involved in the construction industry for many years in Darwin, I have found that having membership to industry Associations have provided the pathway to new clients. I have been an active member of associations such as TCA, the HIA and the MBA for over 15 years.

I currently have a place on the MBANT executive committee. Being either on the executive or the council of these associations opens pathways to clients and relevant industry information that may not ordinarily be accessible.

Since joining ARS, I have used the services of the MBA and its connections to meet with heads of Civil Contractors, Electrical Contractors and Government departmental heads. The most recent was an invitation by the Deputy Chief Minister – Peter Chandler who is also Minister for Infrastructure and planning to attend his office with the MBA council to discuss where the future developments of Darwin and the NT lay.

It is these rare privileged opportunities that help me develop a greater understanding of how to prepare our own company for future growth and economical stability.

These groups also provide social networking that is not always possible in our busy work schedules to become personalised with many of our customers.

For me, these extra efforts have been rewarding for both myself and the companies I have represented.

- MBANT – incorporated in the NT for over 43 years.
- 270 -290 paid members – Fluctuates due to business conditions.
- MBANT targets 3000 personal contacts by Award Dinners, Golf Days, Committee meetings and Trade events.
- MBA National – incorporated for over 125 years.
- 33,000 paid members Australia wide.
- MBA National intends to grow by increased interstate co-operation and Market Intelligence sharing.



**All Round  
Supplies®**

**1300 087 579**

Sydney  
13 Progress Cct  
PRESTONS  
NSW 2170

Newcastle  
Unit 2, 6 Babilla Cl  
BERESFIELD  
NSW 2322

**all-round-supplies.com.au**

Nowra  
23 Cumberland Ave  
STH NOWRA  
NSW 2541

Darwin  
3/8 Albatross St  
WINNELLIE  
NT 0820