



**All Round
Supplies®**



UTILITY LINK

Issue 5, 2007

Web Page Update - New ARSsemblies® Page



The All Round Supplies website has just been updated and now includes a new ARSsemblies® page. The ARSsemblies® page is divided into three utility sections, each with six sub categories. To get a full listing of our ARSsemblies® for any utility subcategory you simply click on the photo and a pdf file opens. To get all the latest ARSsemblies® lists and to see our full range of products and services visit www.all-round-supplies.com.au.

For more information on any of our products or services please contact your nearest branch.

IE MV OH		All Round Supplies
AR01	SCHEMATIC TOOLING (SMP) 400V (SMP)	00000
AR02	SCHEMATIC TOOLING (SMP) 240V (SMP)	00000
AR03	SCHEMATIC TOOLING (SMP) 110V (SMP)	00000
AR04	SCHEMATIC TOOLING (SMP) 400V (SMP)	00000
AR05	SCHEMATIC TOOLING (SMP) 240V (SMP)	00000
AR06	SCHEMATIC TOOLING (SMP) 110V (SMP)	00000
AR07	SCHEMATIC TOOLING (SMP) 400V (SMP)	00000
AR08	SCHEMATIC TOOLING (SMP) 240V (SMP)	00000
AR09	SCHEMATIC TOOLING (SMP) 110V (SMP)	00000
AR10	SCHEMATIC TOOLING (SMP) 400V (SMP)	00000
AR11	SCHEMATIC TOOLING (SMP) 240V (SMP)	00000
AR12	SCHEMATIC TOOLING (SMP) 110V (SMP)	00000
AR13	SCHEMATIC TOOLING (SMP) 400V (SMP)	00000
AR14	SCHEMATIC TOOLING (SMP) 240V (SMP)	00000
AR15	SCHEMATIC TOOLING (SMP) 110V (SMP)	00000
AR16	SCHEMATIC TOOLING (SMP) 400V (SMP)	00000
AR17	SCHEMATIC TOOLING (SMP) 240V (SMP)	00000
AR18	SCHEMATIC TOOLING (SMP) 110V (SMP)	00000
AR19	SCHEMATIC TOOLING (SMP) 400V (SMP)	00000
AR20	SCHEMATIC TOOLING (SMP) 240V (SMP)	00000
AR21	SCHEMATIC TOOLING (SMP) 110V (SMP)	00000
AR22	SCHEMATIC TOOLING (SMP) 400V (SMP)	00000
AR23	SCHEMATIC TOOLING (SMP) 240V (SMP)	00000
AR24	SCHEMATIC TOOLING (SMP) 110V (SMP)	00000
AR25	SCHEMATIC TOOLING (SMP) 400V (SMP)	00000
AR26	SCHEMATIC TOOLING (SMP) 240V (SMP)	00000
AR27	SCHEMATIC TOOLING (SMP) 110V (SMP)	00000
AR28	SCHEMATIC TOOLING (SMP) 400V (SMP)	00000
AR29	SCHEMATIC TOOLING (SMP) 240V (SMP)	00000
AR30	SCHEMATIC TOOLING (SMP) 110V (SMP)	00000
AR31	SCHEMATIC TOOLING (SMP) 400V (SMP)	00000
AR32	SCHEMATIC TOOLING (SMP) 240V (SMP)	00000
AR33	SCHEMATIC TOOLING (SMP) 110V (SMP)	00000
AR34	SCHEMATIC TOOLING (SMP) 400V (SMP)	00000
AR35	SCHEMATIC TOOLING (SMP) 240V (SMP)	00000
AR36	SCHEMATIC TOOLING (SMP) 110V (SMP)	00000
AR37	SCHEMATIC TOOLING (SMP) 400V (SMP)	00000
AR38	SCHEMATIC TOOLING (SMP) 240V (SMP)	00000
AR39	SCHEMATIC TOOLING (SMP) 110V (SMP)	00000
AR40	SCHEMATIC TOOLING (SMP) 400V (SMP)	00000
AR41	SCHEMATIC TOOLING (SMP) 240V (SMP)	00000
AR42	SCHEMATIC TOOLING (SMP) 110V (SMP)	00000
AR43	SCHEMATIC TOOLING (SMP) 400V (SMP)	00000
AR44	SCHEMATIC TOOLING (SMP) 240V (SMP)	00000
AR45	SCHEMATIC TOOLING (SMP) 110V (SMP)	00000
AR46	SCHEMATIC TOOLING (SMP) 400V (SMP)	00000
AR47	SCHEMATIC TOOLING (SMP) 240V (SMP)	00000
AR48	SCHEMATIC TOOLING (SMP) 110V (SMP)	00000
AR49	SCHEMATIC TOOLING (SMP) 400V (SMP)	00000
AR50	SCHEMATIC TOOLING (SMP) 240V (SMP)	00000
AR51	SCHEMATIC TOOLING (SMP) 110V (SMP)	00000
AR52	SCHEMATIC TOOLING (SMP) 400V (SMP)	00000
AR53	SCHEMATIC TOOLING (SMP) 240V (SMP)	00000
AR54	SCHEMATIC TOOLING (SMP) 110V (SMP)	00000
AR55	SCHEMATIC TOOLING (SMP) 400V (SMP)	00000
AR56	SCHEMATIC TOOLING (SMP) 240V (SMP)	00000
AR57	SCHEMATIC TOOLING (SMP) 110V (SMP)	00000
AR58	SCHEMATIC TOOLING (SMP) 400V (SMP)	00000
AR59	SCHEMATIC TOOLING (SMP) 240V (SMP)	00000
AR60	SCHEMATIC TOOLING (SMP) 110V (SMP)	00000
AR61	SCHEMATIC TOOLING (SMP) 400V (SMP)	00000
AR62	SCHEMATIC TOOLING (SMP) 240V (SMP)	00000
AR63	SCHEMATIC TOOLING (SMP) 110V (SMP)	00000
AR64	SCHEMATIC TOOLING (SMP) 400V (SMP)	00000
AR65	SCHEMATIC TOOLING (SMP) 240V (SMP)	00000
AR66	SCHEMATIC TOOLING (SMP) 110V (SMP)	00000
AR67	SCHEMATIC TOOLING (SMP) 400V (SMP)	00000
AR68	SCHEMATIC TOOLING (SMP) 240V (SMP)	00000
AR69	SCHEMATIC TOOLING (SMP) 110V (SMP)	00000
AR70	SCHEMATIC TOOLING (SMP) 400V (SMP)	00000
AR71	SCHEMATIC TOOLING (SMP) 240V (SMP)	00000
AR72	SCHEMATIC TOOLING (SMP) 110V (SMP)	00000
AR73	SCHEMATIC TOOLING (SMP) 400V (SMP)	00000
AR74	SCHEMATIC TOOLING (SMP) 240V (SMP)	00000
AR75	SCHEMATIC TOOLING (SMP) 110V (SMP)	00000
AR76	SCHEMATIC TOOLING (SMP) 400V (SMP)	00000
AR77	SCHEMATIC TOOLING (SMP) 240V (SMP)	00000
AR78	SCHEMATIC TOOLING (SMP) 110V (SMP)	00000
AR79	SCHEMATIC TOOLING (SMP) 400V (SMP)	00000
AR80	SCHEMATIC TOOLING (SMP) 240V (SMP)	00000
AR81	SCHEMATIC TOOLING (SMP) 110V (SMP)	00000
AR82	SCHEMATIC TOOLING (SMP) 400V (SMP)	00000
AR83	SCHEMATIC TOOLING (SMP) 240V (SMP)	00000
AR84	SCHEMATIC TOOLING (SMP) 110V (SMP)	00000
AR85	SCHEMATIC TOOLING (SMP) 400V (SMP)	00000
AR86	SCHEMATIC TOOLING (SMP) 240V (SMP)	00000
AR87	SCHEMATIC TOOLING (SMP) 110V (SMP)	00000
AR88	SCHEMATIC TOOLING (SMP) 400V (SMP)	00000
AR89	SCHEMATIC TOOLING (SMP) 240V (SMP)	00000
AR90	SCHEMATIC TOOLING (SMP) 110V (SMP)	00000
AR91	SCHEMATIC TOOLING (SMP) 400V (SMP)	00000
AR92	SCHEMATIC TOOLING (SMP) 240V (SMP)	00000
AR93	SCHEMATIC TOOLING (SMP) 110V (SMP)	00000
AR94	SCHEMATIC TOOLING (SMP) 400V (SMP)	00000
AR95	SCHEMATIC TOOLING (SMP) 240V (SMP)	00000
AR96	SCHEMATIC TOOLING (SMP) 110V (SMP)	00000
AR97	SCHEMATIC TOOLING (SMP) 400V (SMP)	00000
AR98	SCHEMATIC TOOLING (SMP) 240V (SMP)	00000
AR99	SCHEMATIC TOOLING (SMP) 110V (SMP)	00000
AR100	SCHEMATIC TOOLING (SMP) 400V (SMP)	00000

Wide Mouth Pillar Base



There have always been difficulties positioning cable cores for termination in low voltage pillars with up to three, 4 core 240mm² solid or stranded cables terminating in a single pillar. With it's larger opening, the wide mouth pillar base is designed to give more room for positioning and terminating cables into pillars. The wide mouth pillar base has now been adopted as the standard pillar base for all low voltage mains cable pillar terminations on the Integral Energy network. The new base is also used with the recently approved double link pillar on the Energy Australia network.

Christmas Closure

All Round Supplies' Prestons and Nowra branches will be closed for the Christmas period from 24 December 2007 reopening on 14 January 2008. Our Beresfield branch will also be closed from 24 December but will reopen on 09 January 2008.

Have a very merry Christmas and a safe and happy new year from all of the staff at All Round Supplies





12V Cordless Impact Wrench

There is now a 12V cordless impact wrench available that can be used for shearbolt connectors. This tool was used in jointing demonstrations at the E21C transmission & distribution conference and exhibition and was very impressive.

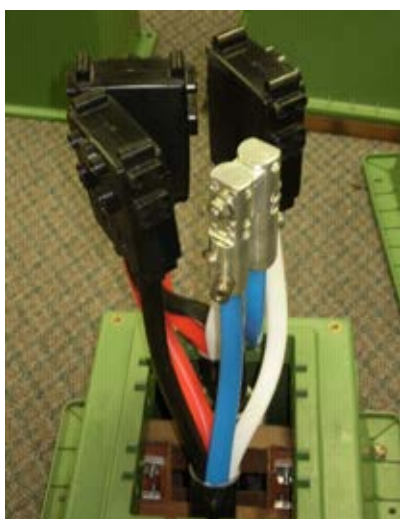


The cordless impact wrench is excellent for shearbolts, it makes quick and easy work of shearing the heads off of connectors. It is supplied with 1 x battery charger, 2 x batteries, carry case, instructions, 1/4" hex drive adaptor, 1/2" hex sockets 10mm, 13mm, 17mm, 19mm, 22mm and 27mm. Suitable for shear head bolts up to 100Nm.



New Low Voltage Pillar Terminations

There are now a number of new pillar terminations approved for use on the Integral Energy and Energy Australia networks. The new pillar terminations are designed with either shearbolt or torque screw technology and may be used as an alternative to the traditional compression lugs or bi-form and tri-form connectors. Because compression lugs are not used there is no need for an expensive crimping tool or remembering the right die, a socket set or torque wrench is all you need. There are also no heatshrink components in the new terminations so they can be installed on fire ban days. For Energy Australia's network there is a new two way and three way distribution pillar termination for 240 AL4 XQ Z/SAC that use shearbolt connectors. There is also now an approved double link pillar suitable for both 240 AL4 XQ Z/SAC and 185 CU1 XQ Z that uses torque screws. For the Integral Energy network there is now a shearbolt type 1 mains, 2 mains and 3 mains termination kit approved for 240mm² 4c stranded Al. There is also a torque screw 2 mains termination kit approved for the same cable. If you would like more information on any of the new approved pillar terminations available please contact your nearest All Round Supplies office.



Left is a picture showing the shearbolt 2 mains termination for 240mm² 4c stranded or solid Aluminium cable, approved for the Integral Energy and Energy Australia networks.

Right is a picture showing the torque screw 2 mains termination for 240mm² 4c stranded Aluminium cable, approved for the Integral Energy network.





Schneider RM6 Switchgear in Energy Australia Kiosks



Schneider RM6 Switchgear

Some Energy Australia kiosk substations will now be supplied with Schneider RM6 switchgear. The cable termination for the RM6 switchgear is a bit different to the termination design for ABB SDAF3 switchgear. Refer to Energy Australia's network standard advice NSA1433 for details of the RM6 termination. The HV fuses required for RM6 switchgear are also different. All Round Supplies now stocks the HV fuses and all components for terminating cables onto RM6 switchgear. Termination kits can be supplied as ARSsemblies® to make ordering easy.



RM6 Termination

For more information about ARSsemblies® or to get a full list of the ARSsemblies® available visit our website or contact your nearest branch.

Energy Australia 11kV 300mm² Triplex Cable

Energy Australia is changing from 300mm² Cu single core EPR cable to 300mm² Cu Triplex EPR cable. Triplex cable is essentially three single core cables laid up together, similar to high voltage ABC but without the catenary wire. The triplex cable has a 70mm² concentric copper wire screen on each core that has a fault rating of 10kA/1 sec, the single core cable screen is only rated 5kA/1 sec. Due To Energy Australia changing from 300mm² Cu single core EPR to 300mm² Cu Triplex EPR, All Round Supplies will no longer stock the single core EPR when current stock is sold. Triplex cable is now stocked in both our Prestons and Beresfield branches. For more information regarding the use of triplex cable on the Energy Australia network refer to network standard advise NSA1420A, available on the Energy Australia website.

Recent Integral Energy Notices

- | | |
|------------------|---|
| Nov 21, 2007 106 | Draft MDI0030 Special 1 |
| Nov 21, 2007 105 | MDI 0030 November 07 |
| Nov 21, 2007 104 | Safety Bulletin, Country Energy Incident Update 4 |
| Nov 21, 2007 103 | Replace Cast Iron Pot Head |
| Nov 14, 2007 102 | Safety Bulletin, Country Energy Incident Update 3 |

All notices issued by Integral Energy are available on the ASP website.

Recent Integral Energy Technical Bulletin Releases

- | | |
|----------------------|---|
| Oct 08, 2007 TB 0039 | Sealing of Cable Ends |
| Aug 01, 2007 TB 0036 | Specification Change for High Voltage Distribution Cables |
| Jun 19, 2007 TB 0034 | New and Replaced Transmission Earth Leads |
| Jun 19, 2007 TB 0032 | Enlarged Opening Pillar - New Standard Item |

All technical bulletins issued by Integral Energy are available on the ASP website.





Recent Integral Energy Network Standards Updates

Amendments

- MDI0012 Overhead and Underground Transmission Mains
- MDI0013 Clearances to be Maintained between Network Assets and Vegetation
- SDI105 Indoor Distribution Substation Civil and Construction Design Requirements
- SDI514 Access Roadways and Driveways
- SMI116 Distribution Maximum Demand Indication (MDI) Reading Instruction
- SDI305 11kV/22kV Surge Arrestor Specification
- SDI507 Voltages, Insulation Levels and Fault Ratings



All network standards updates issued by Integral Energy are available on the ASP website.

Recent Energy Australia Customer Installation Advice

- Nov 21, 2007 CIA 1327 New Edition ES 7 Application of Network Use of System Charges, July 2007
- Oct 09, 2007 CIA 1326 New Edition of Energy Australia Publication ES 4 Service Provider Authorisation, October 2007
- Sep 28, 2007 CIA 1325 Amendments to ES 10 Requirements for Electricity Connection to Developments, (Interruptions to Supply for Periodic Routine Maintenance on Customer Substations)
- Sep 20, 2006 CIA 1324 Amendment to Energy Australia Publication ES 3 Metering Installations, January 2007
- Sep 06, 2006 CIA 1323 Amendments to ES 1 Customer Connection Information, January 2007

All CIA documents issued by Energy Australia are available on their website.

Recent Energy Australia Network Standards Advice

- Oct 30, 2007 NSA1428 Amendments to Energy Australia's Electrical Safety Rules, February 2007
- Oct 17, 2007 NSA1433 Amendments to Energy Australia's Network Standard NS 177 11kV Joints (including Transition Joints) and Terminations - Polymeric Insulated Cables, August 2002
- Oct 16, 2007 NSA1420A Advisory Note on Changes to use of 11kV Cable Types
- Oct 04, 2007 NSA1430 Amendments to Energy Australia's Network Standard NS 114, Electrical Design and Construction Standards for Chamber Type Substations, March 2007
- Oct 04, 2007 NSA1431 Amendments to Energy Australia's Network Standard NS 136, Assessment and Management of Low Voltage Parallels, December 1998
- Sep 27, 2006 NSA1427 Amendments to Energy Australia's Network Standard NUS 199, Safe Electrical Working on Low Voltage Assets, March 2006
- Sep 26, 2006 NSA1419 Amendments to Energy Australia's Network Standard NS 110, Design and Construction Standard for URDs

All NSA documents issued by Energy Australia are available on their website.

HEAD OFFICE P.O BOX 485 CASULA MALL NSW 2170 ph: 02 9826 9416 fax: 02 9826 8566 Info@all-round-supplies.com.au	PRESTONS BRANCH Unit 1, No. 9 Enterprise Circuit PRESTONS NSW 2170 ph: 02 9826 9416 fax: 02 9826 8566 prestons@all-round-supplies.com.au	NOWRA BRANCH Unit 3, Lot 1 Jellicoe Street SOUTH NOWRA NSW 2541 ph: 02 4421 5000 fax: 02 4421 5099 nowra@all-round-supplies.com.au	BERESFIELD BRANCH 7 Gamma Close BERESFIELD NSW 2322 ph: 02 4966 3733 fax: 02 4966 0952 beresfield@all-round-supplies.com.au
--	--	---	---