

All Round  
Supplies

Endeavour Energy

# Pole Mounted Transformers

Version 2





## POLE TRANSFORMERS

This Pole Mounted Transformer Catalogue is designed to make it easy for you to find the Pole Transformer and construction materials required for your Endeavour Energy job.

We carry an extensive range of utility approved products for use on the electrical infrastructure networks of Endeavour Energy, Ausgrid, Essential Energy in NSW and Power Water Corporation in the Northern Territory.

Our range of products make it easy for you to complete your project saving you time, money and the hassle of running around finding the materials you need to get the job done.

We are committed to providing you with the best products, brands and services from many of the world's leading manufacturers such as Olex, Tyco Electronics, PLP, Tyree Transformers, Wagners, Fuseco, Australmold, Erico, Sicame, Greg Sewell Forgings, MV Technology, Bri-Tech, Prysmian, Cabac, ABB, and Schneider.

### WHAT WE OFFER:

- ▶ Huge range of stock in all branch locations.
- ▶ Project-specific packaging & labelling of deliveries.
- ▶ Coordinate deliveries to meet project deadlines.
- ▶ Kitting and ARSsemblies for ease of ordering.
- ▶ Ability to order in non-stocked items on request.
- ▶ Technical expertise and advice.
- ▶ Utility approved products.

# PRODUCT INDEX

<b>Pole Mounted Transformers</b>	<b>4</b>	Insulators	<b>16</b>
<b>ARsemblies</b>	<b>5</b>	Brackets	<b>16</b>
<b>Pole Substation ARsemblies</b>		Banding	<b>16</b>
Urban Pole Substation Construction	<b>6</b>	Covers/Guard	<b>16</b>
Urban Pole Substation Diagram	<b>7</b>	Pole Steps	<b>16</b>
Rural/Semi-Rural Pole Substation Construction	<b>8</b>	Clamps/Connectors	<b>16</b>
Rural/Semi-Rural Pole Substation Diagram	<b>9</b>	Cable Saddles	<b>17</b>
Coastal Pole Substation Construction	<b>10</b>	Earthing Equipment	<b>17</b>
Coastal Pole Substation Diagram	<b>11</b>	Conduit	<b>17</b>
<b>Did you know... Diagram</b>	<b>12</b>	Bolts - Galvanised	<b>17</b>
<b>Materials</b>		Coachscrews - Galvanised	<b>18</b>
Pole (Substation)	<b>14</b>	Washers/Nuts- Galvanised	<b>18</b>
Crossarms	<b>14</b>	Set Screws Stainless Steel & TEK	<b>18</b>
Gain Blocks	<b>14</b>	Bolts Stainless Steel	<b>18</b>
Arrester & Accessories	<b>14</b>	Washers/Nuts - Stainless Steel	<b>18</b>
Shroud	<b>14</b>	Mastic	<b>19</b>
LV Fuse Switch/Disconnecter	<b>14</b>	Ties	<b>19</b>
Fuse Cartridge	<b>15</b>	Cable Ties	<b>19</b>
Cable	<b>15</b>	Metalwork	<b>19</b>
Lug/Link	<b>15</b>	Clouts	<b>19</b>
MDI	<b>15</b>	Heatshrink	<b>19</b>
EDO	<b>15</b>	Tapes	<b>19</b>
Fuses	<b>16</b>	Notes	<b>20</b>
		Publications & Supporting Material	<b>23</b>





# Endeavour Energy Pole Mounted Transformers

## 11kV Transformer

Description	ARS Undressed 'Clean Skin' Code	ARS Dressed Code
25kVA/1ph/11kV	03345	A0273
50kVA/1ph/11kV	03346	A0274
25kVA/3ph/11kV	02400	A0143
63kVA/3ph/11kV	02401	A0127
100kVA/3ph/11kV	02402	A0128
200kVA/3ph/11kV	03567	A0278
315kVA/3ph/11kV	02572	A0378
400kVA/3ph/11kV	08354	TBA

INCLUDES  
Endeavour Energy  
Asset Number  
Installation

## Single Wire Earth Return (SWER)

Description	ARS Undressed 'Clean Skin' Code	ARS Dressed Code
25kVA/12.7 SWER	04127	TBA

**SO, WHAT'S THE DIFFERENCE BETWEEN AN UNDRESSED AND A DRESSED POLE TRANSFORMER?**

Dressed transformers include: surge diverters/arrestors, insulated bracket, earth leads, CCT dropper cable (40mm grey), lugs, gain blocks, terminator

conduit, chain, bow shackles, MDI meter (only three phase ARSsemblies), setscrews, washers and nuts- all stainless steel. Alternatively you

can choose to purchase these items individually (refer to pages 14-19) or purchase a Pole Transformer Dressing Kit listed below.



Undressed 'Clean Skin'



Dressed

**22kV TRANSFORMERS ALSO AVAILABLE**

Ask in store today.



Undressed 'Clean Skin'



Dressed

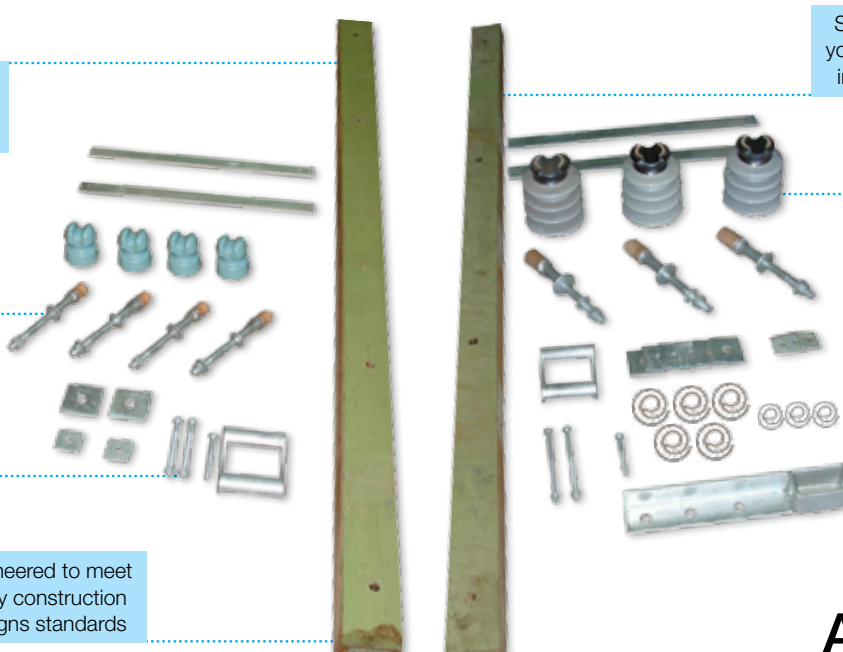
## Pole Transformer Dressing Kits

Description	Code	Buy Unit	Unit of Measure
IEND PT 3PH DRESSING SET 100/200/315KVA	A0650	1 Unit	Kit
IEND PT 3PH DRESSING SET 25/63KVA	A0651	1 Unit	Kit
IEND PT 1PH DRESSING SET 25/50KVA	A0652	1 Unit	Kit



# Have you considered our ARSembles?

We all know electrical distribution networks include complex constructions and designs as part of their Utility Standards. These can be confusing and often result in contractors wasting time trying to source the approved materials needed to do the job. All Round Supplies can assist you with our range of ARSembles®, engineered to make constructions easy. Our ARSembles® cater for both overhead and underground constructions for Endeavour, Ausgrid, Essential.



One stock code per construction type for easy ordering

Only utility-approved materials included for peace of mind

ARSembles® include all of the materials that are not variable

Engineered to meet Utility construction designs standards

Save time and effort as you don't have to source individual components

Reduce the chance of forgetting materials in the field

Multiple kits can be packaged to meet project specific requirements

**ARSembles**  
Utility Construction Kits

# Endeavour Pole Substation ARSsemblies®

## Urban Pole Substation Construction

### 1. HV Overhead Construction

The high voltage overhead construction for the top of the transformer pole will depend on the construction design, for example 'B21'. Contact your nearest All Round Supplies branch for your range of MV Overhead ARSsemblies.

### 2. Substation Pole Construction

Description	Code	Buy Unit	Unit of Measure
END URBAN 11KV 3PH POLE SUB, BARE LV WOOD POLE	A0840	1 Unit	Kit
END URBAN 11KV 3PH POLE SUB, BARE LV CONCRETE POLE	A0841	1 Unit	Kit
END URBAN 11KV 3PH POLE SUB, LV ABC WOOD POLE	A0842	1 Unit	Kit
END URBAN 11KV 3PH POLE SUB, LV ABC CONCRETE POLE	A0843	1 Unit	Kit

HV DOF elements and LV HRC fuse cartridges are sold separately as required.

For transformers 300kVA and above, additional 120mm<sup>2</sup> SDI cable (00516) and lugs (00148) are required.

### 3. Pole Substation (Dressed)

Description	Code	Buy Unit	Unit of Measure
IEPT 11KV 25KVA 1 PHASE-DRESSED	A0273	1 Unit	Kit
IEPT 11KV 50KVA 1 PHASE-DRESSED	A0274	1 Unit	Kit
IEPT 11KV 25KVA 3 PHASE-DRESSED	A0143	1 Unit	Kit
IEPT 11KV 63KVA 3 PHASE-DRESSED	A0127	1 Unit	Kit
IEPT 11KV 100KVA 3 PHASE-DRESSED	A0128	1 Unit	Kit
IEPT 11KV 200KVA 3 PHASE-DRESSED	A0278	1 Unit	Kit
IEPT 11KV 315KVA 3 PHASE-DRESSED	A0378	1 Unit	Kit

### 3. Transformer Hanging Brackets

Description	Code	Buy Unit	Unit of Measure
BRACKET,POLE TX SUPPORT TO 63KVA, BOLTED	05574	1 Unit	Each
BRACKET,POLE TX SUPPORT 100KVA+, BOLTED	02164	1 Unit	Each
BRACKET,POLE TX SUPPORT 100KVA+, STRAP	03959	1 Unit	Each

05574 – Hanging bracket for up to 63kVA transformer on concrete poles where mounting holes exist.

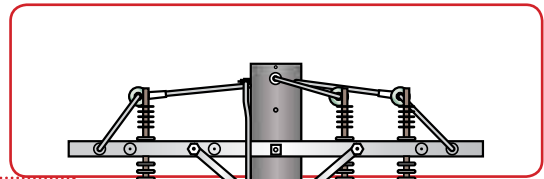
02164 – Hanging bracket for 100kVA and above transformers on wood/concrete poles where mounting holes exist.

03959 – Hanging bracket for 100kVA and above transformers on concrete poles where no mounting holes exist.

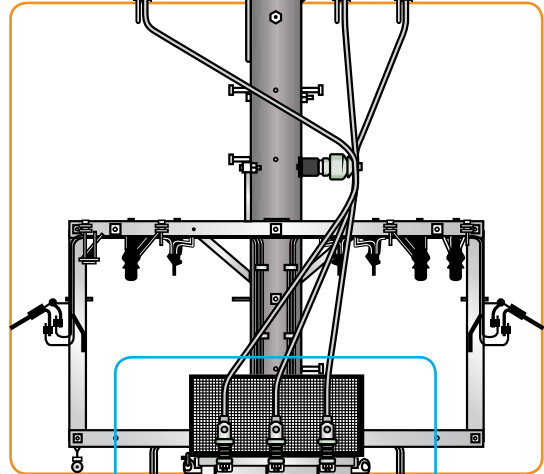
**NOTE:** ARSsemblies exclude the Pole Transformer and excludes the materials to dress the Pole Transformer. Also excludes conductor specific fittings (e.g. preform deadends) and any kingbolts or eyebolts used to attach fittings to the pole. (Refer to extended descriptions of individual kits for more detailed inclusions and exclusions).

# Urban Pole Substation Construction

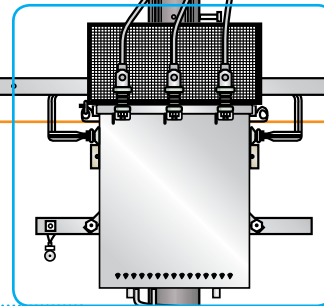
## 1. HV Overhead Construction



## 2. Substation Pole Construction



## 3. Pole Substation (Dressed) Transformer Hanging Brackets



# Rural/Semi-Rural Pole Substation Construction

## 1. HV Overhead Construction

The high voltage overhead construction for the top of the transformer pole will depend on the construction design, for example 'B21'. Contact us for your range of MV Overhead ARSsemblies.

## 2. Substation Pole Construction

Description	Code	Buy Unit	Unit of Measure
IE RURAL 11KV 3PH POLE SUB, NO LV WOOD	A0850	1 Unit	Kit
IE RURAL 11KV 3PH POLE SUB, NO LV CONC	A0851	1 Unit	Kit
IE RURAL 11KV 1PH POLE SUB, NO LV WOOD	A0852	1 Unit	Kit
IE RURAL 11KV 1PH POLE SUB, NO LV CONC	A0853	1 Unit	Kit

HV DOF elements are sold separately as required.

## 3. LV ABC Mains and Fuse/Switch

Description	Code	Buy Unit	Unit of Measure
BRACKET, HV LINK LONG	00438	1 Unit	Each
CLAMP, STRAIN/TERM LV ABC 4X50-95	02584	1 Unit	Each
CLAMP, STRAIN/TERM LV ABC 4X95-150	00467	1 or Pack of 15	Each
SWITCH, LV ABC 3PH 400AMP 25-150 IPC	06662	1 Unit	Each

LV DIN2 insulated tag fuse cartridges are sold separately as required.

## 4. Pole Substation (Dressed)

Description	Code	Buy Unit	Unit of Measure
IEPT 11KV 25KVA 1 PHASE-DRESSED	A0273	1 Unit	Kit
IEPT 11KV 50KVA 1 PHASE-DRESSED	A0274	1 Unit	Kit
IEPT 11KV 25KVA 3 PHASE-DRESSED	A0143	1 Unit	Kit
IEPT 11KV 63KVA 3 PHASE-DRESSED	A0127	1 Unit	Kit
IEPT 11KV 100KVA 3 PHASE-DRESSED	A0128	1 Unit	Kit
IEPT 11KV 200KVA 3 PHASE-DRESSED	A0278	1 Unit	Kit
IEPT 11KV 315KVA 3 PHASE-DRESSED	A0378	1 Unit	Kit

## 4. Transformer Hanging Brackets

Description	Code	Buy Unit	Unit of Measure
BRACKET,POLE TX SUPPORT TO 63KVA, BOLTED	05574	1 Unit	Each
BRACKET,POLE TX SUPPORT 100KVA+, BOLTED	02164	1 Unit	Each
BRACKET,POLE TX SUPPORT 100KVA+, STRAP	03959	1 Unit	Each

## 5. Service Fuse/Switch

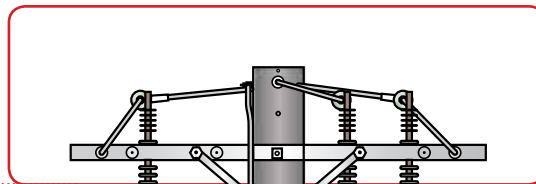
Description	Code	Buy Unit	Unit of Measure
SWITCH,LV ABC 1PH 100AMP	02171	1 Unit	Each
BRACKET, TO SUIT SWITCH LV ABC 1PH 100A	02172	1 Unit	Each
FUSE, LINK CARTRIDGE 100A HRC TYPE RH	02414	1 Unit	Each

**NOTE:** ARSsemblies exclude the Pole Tranformer and excludes the materials to dress the Pole Transformer. Also excludes conductor specific fittings (e.g. preform deadends) and any kingbolts or eyebolts used to attach fittings to the pole. (Refer to extended descriptions of individual kits for more detailed inclusions and exclusions.)

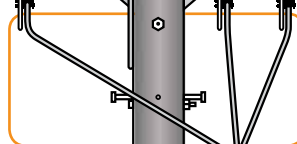


# Rural/Semi-Rural Pole Substation Construction

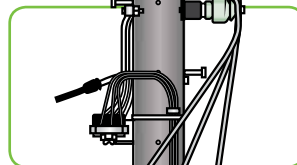
## 1. HV Overhead Construction



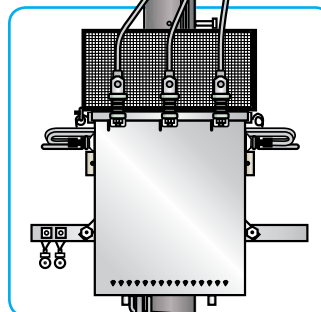
## 2. Substation Pole Construction



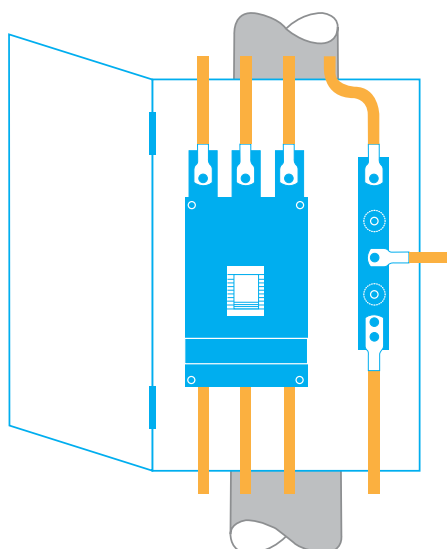
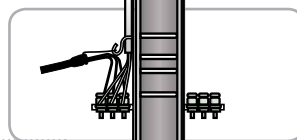
## 3. LV ABC Mains and Fuse/Switch



## 3. Pole Substation (Dressed) Transformer Hanging Brackets



## 5. Service Fuse/Switch



### 03365

We also stock low voltage circuit-breaker switchgear, maximum 1250/1000 Amp (set to Integral Energy specifications).

Includes 8mm insulating panel 600 x 900, 4 off P1000 Unistrut Mounting Rails, neutral bar to suit Meter Box/Pole mounted installation. Does not include Meter Box.

# Coastal Pole Substation Construction

## 1. HV Overhead Construction

The high voltage overhead construction for the top of the transformer pole will depend on the construction design, for example 'B21'. Contact us for your range of MV Overhead ARSsemblies.

## 2. Substation Pole Construction

Description	Code	Buy Unit	Unit of Measure
END COAST 11KV 3PH POLE SUB, BARE LV WOOD POLE	A0868	1 Unit	Kit

HV DOF elements and LV HRC fuse cartridges are sold separately as required.

For transformers 300kVA and above, additional 120mm<sup>2</sup> SDI cable (00516) and lugs (00148) are required.

## 3. Pole Substation (Undressed)

Description	Code	Buy Unit	Unit of Measure
11KV 25KVA 1 PHASE	03345	1 Unit	Each
11KV 50KVA 1 PHASE	03346	1 Unit	Each
11KV 25KVA 3 PHASE	02400	1 Unit	Each
11KV 63KVA 3 PHASE	02401	1 Unit	Each
11KV 100KVA 3 PHASE	02402	1 Unit	Each
11KV 200KVA 3 PHASE	03567	1 Unit	Each
11KV 315KVA 3 PHASE	02572	1 Unit	Each

## 3. Transformer Hanging Brackets

Description	Code	Buy Unit	Unit of Measure
BRACKET,POLE TX SUPPORT TO 63KVA, BOLTED	05574	1 Unit	Each
BRACKET,POLE TX SUPPORT 100KVA+, BOLTED	02164	1 Unit	Each
BRACKET,POLE TX SUPPORT 100KVA+, STRAP	03959	1 Unit	Each

05574 – Hanging bracket for up to 63kVA transformer on concrete poles where mounting holes exist.

02164 – Hanging bracket for 100kVA and above transformers on wood/concrete poles where mounting holes exist.

03959 – Hanging bracket for 100kVA and above transformers on concrete poles where no mounting holes exist.

## 4. Service Fuse/Switch

Description	Code	Buy Unit	Unit of Measure
SWITCH,LV ABC 1PH 100AMP	02171	1 Unit	Each
BRACKET, TO SUIT SWITCH LV ABC 1PH 100A	02172	1 Unit	Each
FUSE, LINK CARTRIDGE 100A HRC TYPE RH	02414	1 Unit	Each

**NOTE:** ARSsemblies exclude the Pole Transformer and excludes the materials to dress the Pole Transformer. Also excludes conductor specific fittings (e.g. preform deadends) and any kingbolts or eyebolts used to attach fittings to the pole. (Refer to extended descriptions of individual kits for more detailed inclusions and exclusions.)

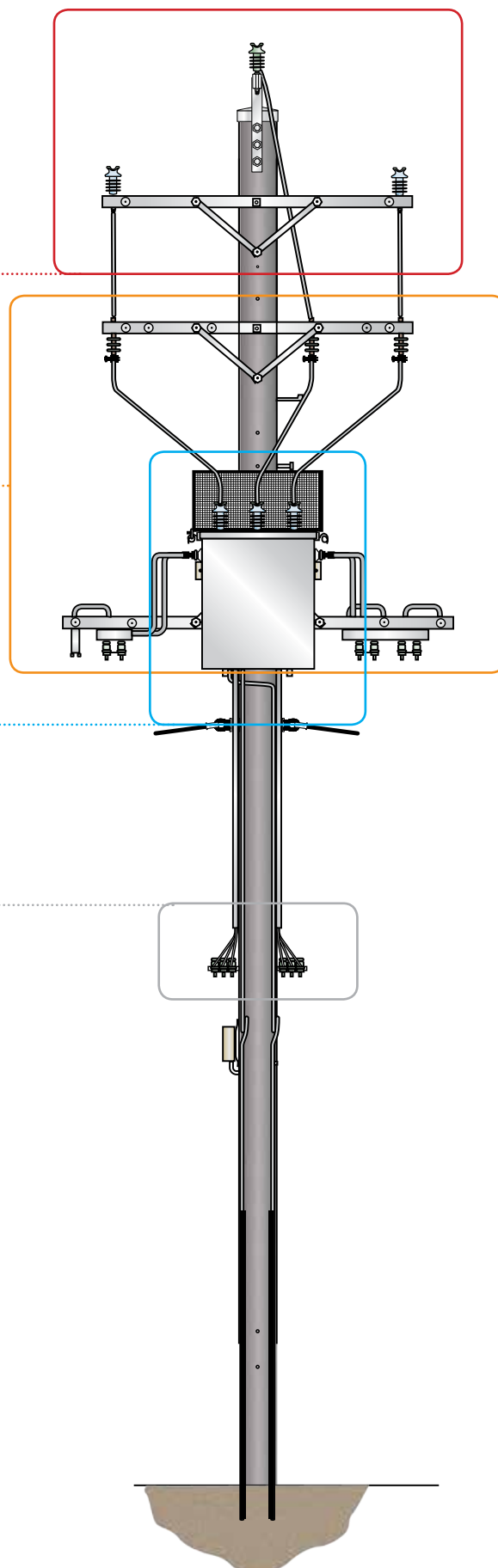
# Coastal Pole Substation Construction

## 1. HV Overhead Construction

## 2. Substation Pole Construction

## 3. Pole Substation (Dressed) Transformer Hanging Brackets

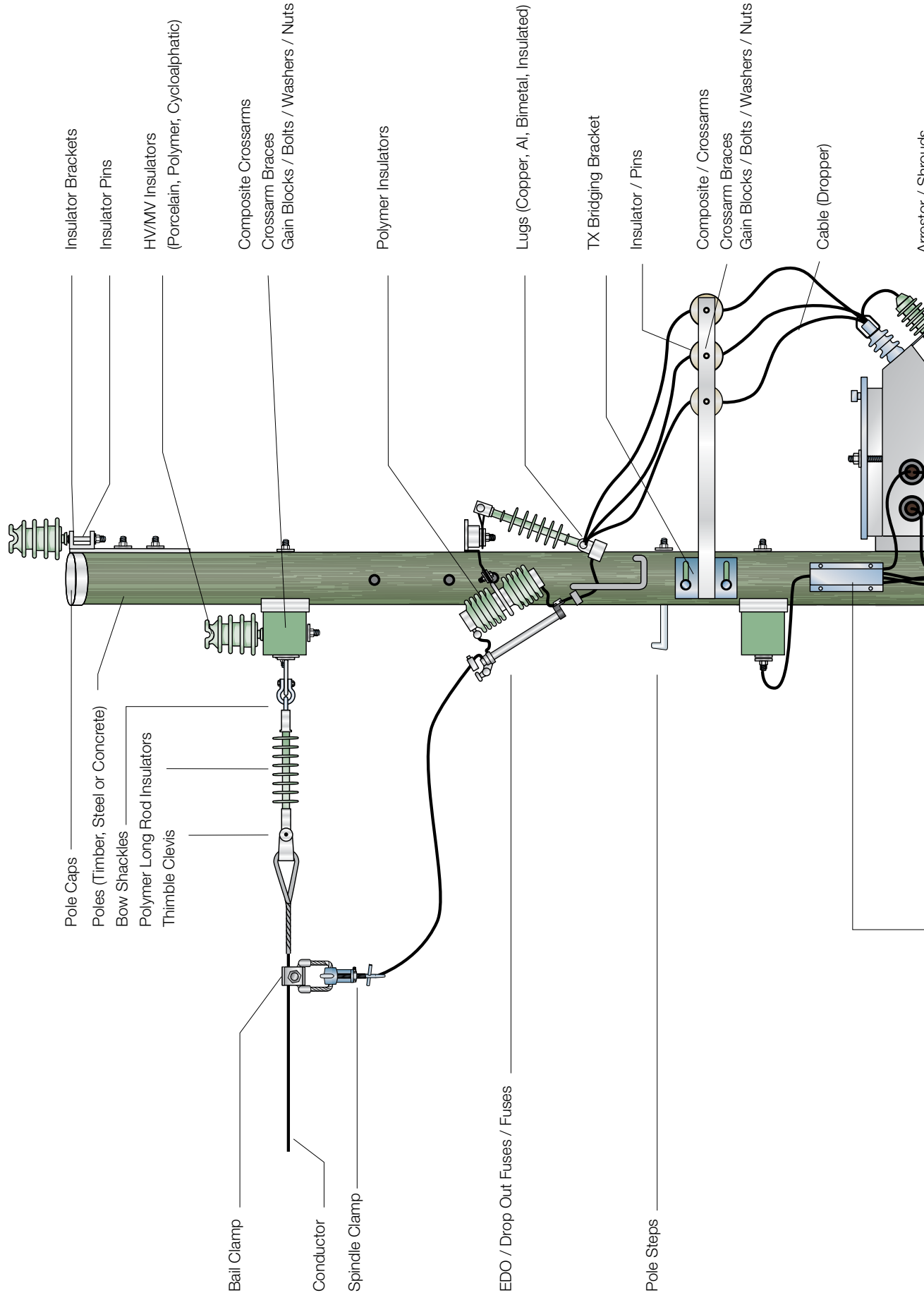
## 5. Service Fuse/Switch

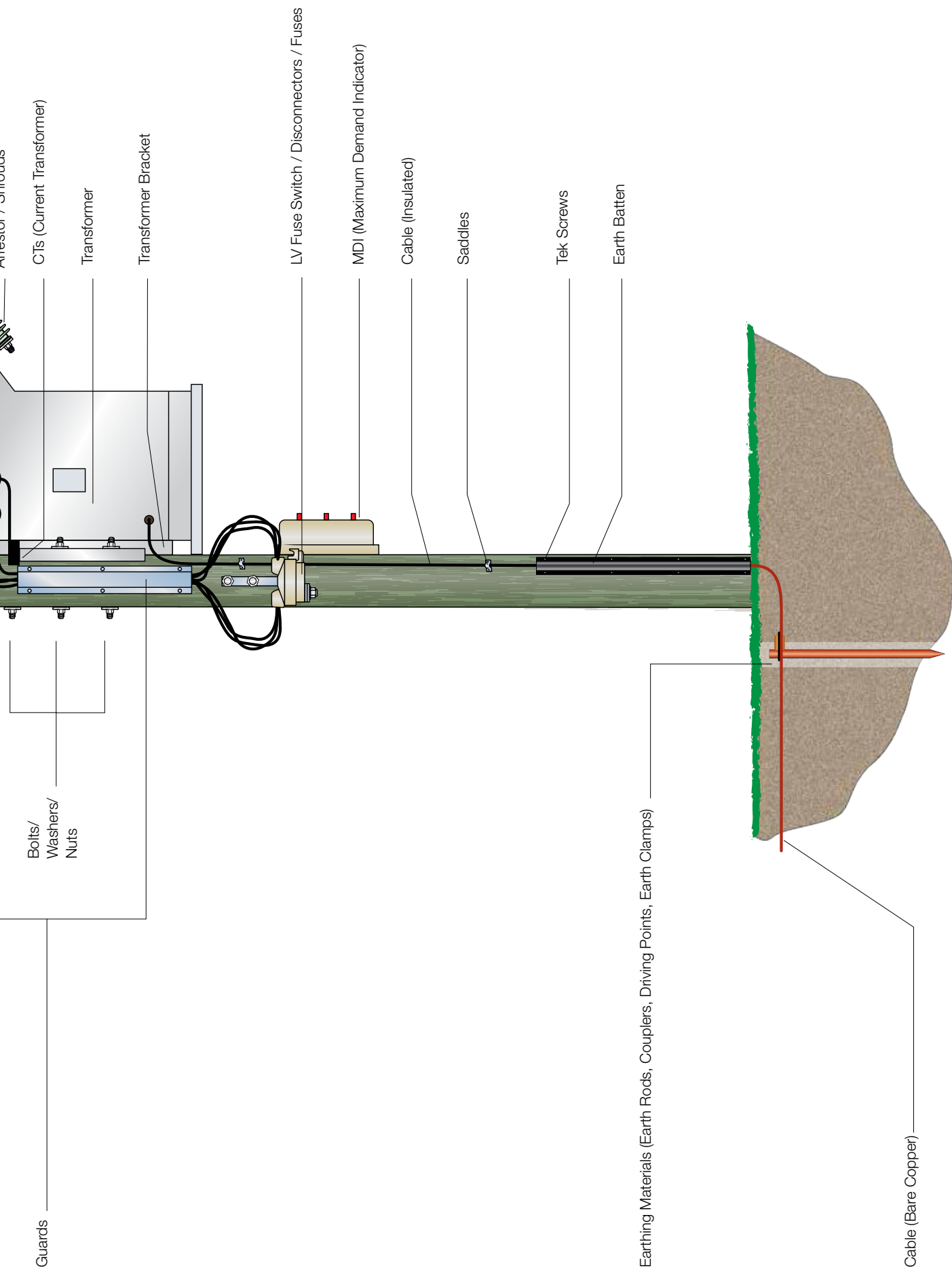




# Did you know...

All Round Supplies can supply all of your pole mounted transformer construction materials.





# Endeavour Energy Pole Mounted Transformer Construction Materials

## Pole (Substation)

Description	Code	Buy Unit	Unit of Measure
POLE, WOOD 12.5 SUBSTATION*	00680	1 Unit	Each

\*Note: Single units are stocked in Nowra. Direct deliveries available from other Branches.



## Crossarms

Description	Code	Buy Unit	Unit of Measure
CROSSARM,WOOD HV 100X100X1800	05434	1 or 36 Units	Each
CROSSARM,WOOD HV 100X100X2700	05433	1 or 36 Units	Each
CROSSARM,WOOD LV 100X100X2700	05418	1 or 36 Units	Each
CROSSARM,WOOD LV 100X100X1465	05417	1 or 36 Units	Each
CROSSARM,WOOD HV 100X100X2100	05431	1 or 36 Units	Each
CROSSARM,WOOD LV 125X100X3000	05419	1 or 36 Units	Each
CROSSARM,WOOD 200X100X1800	02647	1 or 36 Units	Each



## Gain Blocks

Description	Code	Buy Unit	Unit of Measure
GAIN BLOCK, 100MM CROSSARM	00383	1 or Bag of 25	Each
GAIN BLOCK, 100MM TRANSFORMER/CROSSARM	00532	1 or Bag of 25	Each
GAIN BLOCK, 125MM CROSSARM	02058	1 or Bag of 25	Each



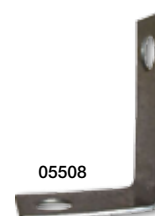
00383



00532

## Arrester & Accessories

Description	Code	Buy Unit	Unit of Measure
BRACKET, 90 DEG SURGE DIVERter PALM SS	05508	1 Unit	Each
BRACKET, INSULATED SURGE DIVERter (ABB)	05990	1 Unit	Each
DIVERter, SURGE 11KV POLYMERIC(POLE TOP)	00059	1 Unit	Each
EARTH LEAD, SURGE DIVERter 500MM	05991	1 Unit	Each



05508



00059



05990

## Shroud

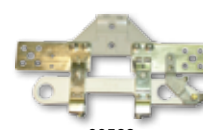
Description	Code	Buy Unit	Unit of Measure
COVER,OUTAGE PROTECT POLE TX - 3 ENTRY	02741	1 or Pack of 50	Each



02741

## LV Fuse Switch/Disconnecter

Description	Code	Buy Unit	Unit of Measure
LINK USL, ISOLATING LV 630A 1PH OPEN	00523	1 Unit	Each
LINK USL, SWITCH/FUSE LV 400A 1PH OPEN	00522	1 Unit	Each
SWITCH, LV ABC 3PH 400AMP 25-150 IPC	06662	1 Unit	Each



00522



00523



06662



## Fuse Cartridge

Description	Code	Buy Unit	Unit of Measure
FUSE, LINK CARTRIDGE 100A 500V DIN 2 INS	00805	1 Unit	Each
FUSE, LINK CARTRIDGE 160A 500V DIN 2 INS	03330	1 Unit	Each
FUSE, LINK CARTRIDGE 200A 500V DIN 2 INS	02828	1 Unit	Each
FUSE, LINK CARTRIDGE 250A 500V DIN 2 INS	00600	1 Unit	Each
FUSE, LINK CARTRIDGE 315A 500V DIN 2 INS	02809	1 Unit	Each
FUSE, LINK CARTRIDGE 400A 500V DIN 2 INS	00599	1 Unit	Each
LINK, SOLID ABC SWITCH DIN 2 400/630 AMP	00804	1 Unit	Each
FUSE, LINK CARTRIDGE 63A HRC OUTDOOR	03189	1 Unit	Each
FUSE, LINK CARTRIDGE 80A HRC OUTDOOR	03188	1 Unit	Each
FUSE, LINK CARTRIDGE 100A HRC OUTDOOR	02675	1 Unit	Each
FUSE, LINK CARTRIDGE 160A HRC OUTDOOR	03187	1 Unit	Each
FUSE, LINK CARTRIDGE 200A HRC OUTDOOR	02165	1 Unit	Each
FUSE, LINK CARTRIDGE 250A HRC OUTDOOR	03186	1 Unit	Each
FUSE, LINK CARTRIDGE 400A HRC OUTDOOR	00928	1 Unit	Each



00599



00928

## Cable

Description	Code	Buy Unit	Unit of Measure
CONDUCTOR, 7/2.75 (40) AAAC 11KV CCT GREY	02381	1 or 250 mtr	Metre
CABLE, LV 70 CU 1C XLPE/PVC NAT/BLACK	02142	1 or 100 mtr	Metre
CABLE, LV 70 CU 1C BARE	00207	1 or 100 mtr	Metre
CABLE, LV 95 AL 1C XLPE/PVC NAT/BLACK	04604	1 or 100 mtr	Metre
CABLE, LV 120 CU 1C XLPE/PVC NAT/BLACK	00516	1 or 100 mtr	Metre
ROD, HARD DRAWN CU 9.5MM DIA 3.6M	05501	1 Unit	Each



## Lug/Links

Description	Code	Buy Unit	Unit of Measure
LUG, COMPRESSION 40 AL M12 1 HOLE	00739	1 Unit	Each
LUG, COMPRESSION 70 CU M10 1 HOLE	02195	1 or Pack of 25	Each
LUG, COMPRESSION 70 CU M12 1 HOLE	00016	1 or Pack of 25	Each
LUG, COMPRESSION 120 CU M12 1 HOLE	00148	1 or Pack of 25	Each
LUG, COMP INSUL 95 BI-METAL M12 1 HOLE	02953	1 Unit	Each
LUG, COMP INSUL 150 BI-METAL M12 1 HOLE	03224	1 Unit	Each
LINK, COMPRESSION 95 AL/70 CU	03870	1 Unit	Each
SLEEVE, FULL TENS INSULATED 150 ABC	03149	1 Unit	Each
SLEEVE, FULL TENS INSULATED 95 ABC E215	02375	1 Unit	Each



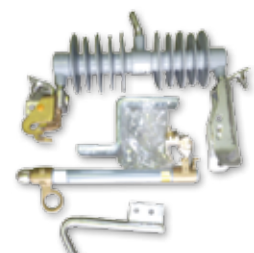
## MDI

Description	Code	Buy Unit	Unit of Measure
METER, MDI 3 PHASE OUTDOOR	02435	1 Unit	Each



## EDO

Description	Code	Buy Unit	Unit of Measure
DOF ASSEMBLY, 12/24KV 8KA SILICONE	05727	1 Unit	Each



## Fuses

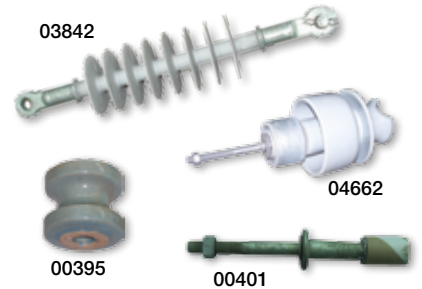
Description	Code	Buy Unit	Unit of Measure
FUSE, DOF ELEMENT 5A CLASS K	04398	1 or Pack of 10	Each
FUSE, DOF ELEMENT 8A CLASS K	00731	1 or Pack of 10	Each
FUSE, DOF ELEMENT 10A CLASS K	04244	1 or Pack of 10	Each
FUSE, DOF ELEMENT 16A CLASS K	00732	1 or Pack of 10	Each
FUSE, DOF ELEMENT 20A CLASS K	00733	1 or Pack of 10	Each
FUSE, DOF ELEMENT 25A CLASS K	04695	1 or Pack of 10	Each
FUSE, DOF ELEMENT 31.5A CLASS K	04740	1 or Pack of 10	Each



## Insulators

Description	Code	Buy Unit	Unit of Measure
INSULATOR, 22KV POLYMER LONG ROD RND PIN	03842	1 Unit	Each
INSULATOR, 11KV CCT LONG STUD WIDE BODY	04662	1 Unit	Each
INSULATOR, LV SHACKLE LARGE	00395	1 Unit	Each
PIN, INSULATOR C/150/7-165	00401	1 Unit	Each
INSULATOR, 22KV PIN TYPE AERO	00402	1 Unit	Each

03842



## Brackets

Description	Code	Buy Unit	Unit of Measure
BRACKET, POLE TX SUPPORT TO 63KVA, BOLTED	05574	1 Unit	Each
BRACKET, POLE TX SUPPORT 100KVA+, BOLTED	02164	1 Unit	Each
BRACKET, POLE TX SUPPORT 100KVA+, STRAP	03959	1 Unit	Each



## Banding

Description	Code	Buy Unit	Unit of Measure
STRAP/BAND, STAINLESS STEEL 19.05MM	02168	1 Unit	Roll-30.5m
BUCKLE, 19.05MM FOR S/S STRAP/BAND	02770	1 or Pack of 100	Each
TOOL, BAND-IT FOR 6-19MM S/S STRAP/BAND	02771	1 Unit	Each



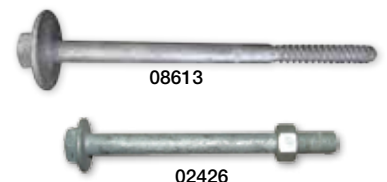
## Covers/Guard

Description	Code	Buy Unit	Unit of Measure
BATTEN, EARTH PLASTIC	03280	1 or Pack of 25	Each
TAPE, MARKER - ELECTRICAL	00108	1 Unit	Roll-500m
COVER GUARD, POLE PLASTIC BLACK 1550X230	02713	1 or Pack of 40	LGTH 1.55M



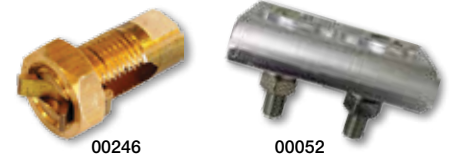
## Pole Steps

Description	Code	Buy Unit	Unit of Measure
POLE, STEP WOOD GALV STEEL DRIVE-IN	08613	1 or Bag of 30	Each
POLE, STEP CONCRETE GALV STEEL M16	02426	1 or Bag of 25	Each



## Clamps/Connectors

Description	Code	Buy Unit	Unit of Measure
CLAMP, PG 7/2.50-19/3.75 AL 2B PS SS	00052	1 or Pack of 10	Each
CLAMP, STRAIN/TERM LV ABC 4X95-150	00467	1 or Pack of 15	Each
CONNECTOR, SPLIT BOLT B26 95 BRASS	00246	1 or Pack of 20	Each



## Cable Saddles

Description	Code	Buy Unit	Unit of Measure
SADDLE, 16MM GALV STEEL	00259	1 or Pack of 100	Each
SADDLE, 50MM GALV STEEL	00979	1 or Pack of 50	Each

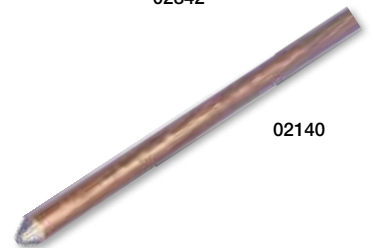


## Earthing Equipment

Description	Code	Buy Unit	Unit of Measure
COMPOUND, EARTH 12KG - GEM-25A	04601	1 Unit	Bag-12KG
COMPOUND, EARTH 20KG - EARTHRITE	01035	1 Unit	Bag-20KG
CONNECTOR "C" CABLE 50-70 WIDE JAW	03967	1 or Pack of 50	Each
CONNECTOR "C" CABLE 95 WIDE JAW	02139	1 or Pack of 25	Each
CONNECTOR "C" CABLE 120 CONVENTIONAL	02598	1 Unit	Each
CONNECTOR "6" ROD 13-15 TAP 70	02138	1 Unit	Each
COUPLER, 15MM EARTH ROD CU POINTED	02141	1 or Pack of 25	Each
ROD, EARTH CU BONDED 15MM 2.44M POINTED	00254	1 Unit	Each
TOOL, CADWELD CHAIN HANDLE CLAMP B160V	05306	1 Unit	Set
TOOL, CADWELD MOULD HANDLE CLAMP SMALL	02791	1 Unit	Set
TOOL, CADWELD MOULD HANDLE CLAMP LARGE	06944	1 Unit	Set
TOOL, CONTROL UNIT CADWELD PLUS	02845	1 Unit	Each
TOOL, DUXSEAL CADWELD MOULD	05461	1 Unit	Each
TOOL, MACHINE DRIVING HEAD KANGO TAPERED	05246	1 Unit	Each
TOOL, REPLACEMENT LEAD CADWELD PLUS	05787	1 Unit	Each
TOOL, SOFT BRUSH CADWELD MOULD	04944	1 Unit	Each
WELD METAL, CADWELD PLUS F20-65	02841	1 or Pack of 20	Each
WELD METAL, CADWELD PLUS F20-90	02842	1 or Pack of 10	Each
WELD METAL, CADWELD PLUS F20-115	02843	1 or Pack of 10	Each
WELD METAL, CADWELD PLUS F20-150	02844	1 or Pack of 10	Each
WELD METAL, CADWELD PLUS F20-200	03537	1 or Pack of 10	Each
WELD METAL, CADWELD PLUS F20-250	04943	1 or Pack of 10	Each
WELD METAL, CADWELD PLUS F20-500	06927	1 or Pack of 10	Each



02842



02140



01035



02138

## Conduit

Description	Code	Buy Unit	Unit of Measure
CONDUIT, TERMINATOR 20MM 90 DEGREE	03488	1 or Pack of 20	Each
CONDUIT, 50MM 30M ROLL PVC FLEXIBLE GREY	00228	1 or Roll of 30	Metre
CONDUIT, 19MM POLY/IRRIGATION BLACK	00988	1 or Roll of 200	Metre
CONDUIT, TERMINATOR 20MM STRAIGHT	03487	1 or Pack of 20	Each



03488



00228



## Bolts - Galvanised

Description	Code	Buy Unit	Unit of Measure
BOLT, HD M12 X 100MM GAL	00396	1 or Pack of 100	Each
BOLT, HD M12 X 130MM GAL	00388	1 or Pack of 100	Each
BOLT, HD M12 X 180MM GAL	00441	1 or Pack of 50	Each
BOLT, HD M12 X 260MM GAL	03274	1 or Pack of 50	Each
BOLT, HD M16 X 180MM GAL	00566	1 or Pack of 30	Each
BOLT, HD M20 X 180MM GAL	00789	1 or Pack of 25	Each



## Coachscrews - Galvanised

Description	Code	Buy Unit	Unit of Measure
SCREW, COACH M12 75MM	00363	1 or Pack of 25	Each
SCREW, COACH M12 100MM	00389	1 or Pack of 25	Each
SCREW, COACH M16 100MM	00726	1 or Pack of 25	Each
SCREW, COACH M16 130MM	02897	1 or Pack of 25	Each



## Washers/Nuts - Galvanised

Description	Code	Buy Unit	Unit of Measure
WASHER, M16, ROUND, GAL	00498	1 or Pack of 200	Each
WASHER, M16, ROUND, GAL 50 X 4MM	03263	1 or Pack of 100	Each
WASHER, M16, SPRING, GAL	03268	1 or Box of 200	Each
WASHER, SQR FLAT (50X50) M12 GALV STEEL	00391	1 or Bag of 100	Each
WASHER, SQR FLAT (50X50) M16 GALV STEEL	00392	1 or Bag of 100	Each
WASHER, SQR FLAT (75X75) M20 GALV STEEL	00390	1 or Bag of 100	Each
NUT, M16, HEX, GAL	02561	1 or Box of 50	Each
NUT, EYE M20 GALV STEEL	00428	1 or Box of 20	Each



## Set Screws Stainless Steel & TEK

Description	Code	Buy Unit	Unit of Measure
SETSCREW, HEX HD M10 X 30 SS	03989	1 or Pack of 100	Each
SETSCREW, HEX HD M10 X 40 SS	00748	1 or Pack of 100	Each
SETSCREW, HEX HD M12 X 30 SS	02894	1 or Pack of 100	Each
SETSCREW, HEX HD M12 X 40 SS	00017	1 or Pack of 50	Each
SETSCREW, HEX HD M12 X 50 SS	00018	1 or Pack of 50	Each
TEK SCREW, HEX 12G X 40MM TYPE 17 CL 3	03633	1 or Pack of 100	Each



## Bolts Stainless Steel

Description	Code	Buy Unit	Unit of Measure
BOLT, HD M20 X 400MM SS W/-NUT	00937	1 Unit	Each
BOLT, HD M20 X 450MM SS W/-NUT	00938	1 Unit	Each
BOLT, HD M20 X 500MM SS W/-NUT	00939	1 Unit	Each
BOLT, HD M20 X 600MM SS W/-NUT	05273	1 Unit	Each
BOLT, HD M20 X 700MM SS W/-NUT	06088	1 Unit	Each



## Washers/Nuts - Stainless Steel

Description	Code	Buy Unit	Unit of Measure
WASHER, M10, ROUND, SS	00357	1 or Pack of 100	Each
WASHER, M10, SPRING, SS	00750	1 or Box of 100	Each
WASHER, M12, ROUND, SS	00020	1 or Pack of 100	Each
WASHER, M12, SPRING, SS	00751	1 or Pack of 100	Each
WASHER, M20, ROUND, SS	02649	1 or Pack of 50	Each
WASHER, M20, SPRING, SS	03271	1 or Pack of 100	Each
NUT, M10, HEX SS	00358	1 or Box of 100	Each
NUT, M12, HEX, SS	00019	1 or Box of 100	Each
NUT, M20, HEX, SS	00753	1 or Pack of 50	Each
COIL SPRING M12-M16 STAIN STEEL	00404	1 or Pack of 100	Each
COIL SPRING M20-M24 STAIN STEEL	00403	1 or Pack of 100	Each



## Mastic

Description	Code	Buy Unit	Unit of Measure
MASTIC, SUPERSOFT 3KG DENSO 410	02565	1 Pack of 3kg	Pack



## Ties

Description	Code	Buy Unit	Unit of Measure
WIRE, SIDE TIE CCT 80MM2	02204	1 Unit	Each



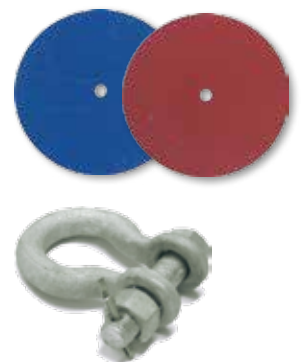
## Cable Ties

Description	Code	Buy Unit	Unit of Measure
NYLON 4.8 X 200 BLACK	03999	1 Unit	Pack of 100
NYLON 4.8 X 300 BLACK	06835	1 Unit	Pack of 100
NYLON 4.8 X 368 BLACK	06834	1 Unit	Pack of 100
NYLON 7.6 X 370 BLACK	06833	1 Unit	Pack of 100
NYLON 8 X 550 BLACK	06772	1 Unit	Pack of 100



## Metalwork

Description	Code	Buy Unit	Unit of Measure
CROSSARM BRACE, 750MM IE	05429	1 Unit	Each
DISC, PHASE INDICATOR (BLUE)	02001	1 Unit	Each
DISC, PHASE INDICATOR (RED)	02002	1 or Pack of 250	Each
DISC, PHASE INDICATOR (WHITE)	02003	1 Unit	Each
STRAP, LV SHACKLE	00414	1 or Pack of 50	Each
BRACKET, HV LINK LONG	00438	1 Unit	Each
BRACKET, LV ABC STRAIN CLAMP SUPPORT	00490	1 Unit	Each
SHACKLE, BOW 70KN M16 CLEVIS BOLT	00880	1 or Pack of 30	Each
CHAIN, M10 GALVANISED	05992	1 Unit	Mtr



## Clouts

Description	Code	Buy Unit	Unit of Measure
CLOUT, 2.8MM X 40MM GALV - 2 KG TUB	00496	1 x 2kg Tub	Each
CLOUT, 2.8MM X 25MM GALV - 2 KG TUB	02343	1 x 2kg Tub	Each



**Sydney**

13 Progress Circuit,  
Prestons, NSW, 2170  
1300 087 579  
[sales@all-round-supplies.com.au](mailto:sales@all-round-supplies.com.au)

**Melbourne**

4/433 Hammond Road,  
Dandenong South, VIC, 3175  
1300 087 579  
[sales@all-round-supplies.com.au](mailto:sales@all-round-supplies.com.au)

**Perth**

70 Kent Way,  
Malaga, WA, 6090  
1300 087 579  
[sales@all-round-supplies.com.au](mailto:sales@all-round-supplies.com.au)

[www.ars.com.au](http://www.ars.com.au)



**All Round  
Supplies®**