

All Round
Supplies

Endeavour Energy

Transmission Construction

Version 2

WELCOME TO OUR TRANSMISSION CONSTRUCTION CATALOGUE

WE OFFER:

- **HUGE RANGE OF STOCK IN ALL BRANCH LOCATIONS.**
- **PROJECT OR JOB SPECIFIC PACKAGING AND LABELLING OF DELIVERIES.**
- **COORDINATE DELIVERIES TO MEET PROJECT DEADLINES.**
- **KITTING AND ARSEMBLIES FOR EASE OF ORDERING.**
- **ABILITY TO ORDER IN NON-STOCKED ITEMS ON REQUEST.**
- **TECHNICAL EXPERTISE AND ADVICE.**
- **UTILITY APPROVED PRODUCTS.**

All Round Supplies is your one-stop specialist distributor for all the materials an electrical contractor needs.

THIS TRANSMISSION CONSTRUCTION CATALOGUE IS DESIGNED TO MAKE IT EASY TO FIND THE PRODUCTS YOU NEED.

We carry an extensive range of products approved for use on the electrical infrastructure networks of Endeavour Energy, Ausgrid, Essential Energy in NSW and Power and Water Corporation in the Northern Territory.

Our range of products make it easy to complete your overhead or underground project saving you time, money and the hassle of running around town finding the materials to get the job done.

We are committed to providing you with the best products, brands and services from many of the world's leading manufacturers such as Olex, Tyco Electronics, PLP, Tyree Transformers, Wagners, Fuseco, Australmold, Erico, Sicame, Greg Sewell Forgings, APP, MV Technology, Bri-Tech, Prysmian, Cabac, ABB, Honeywell and Schneider to name a few.

IF WE DON'T STOCK IT, LET US KNOW AND WE'LL GET IT IN FOR YOU.

All Round Supplies has a branch network covering Sydney (Prestons) - NSW, Nowra - NSW and Newcastle (Beresfield) - NSW, each staffed with industry specialists that understand your needs.



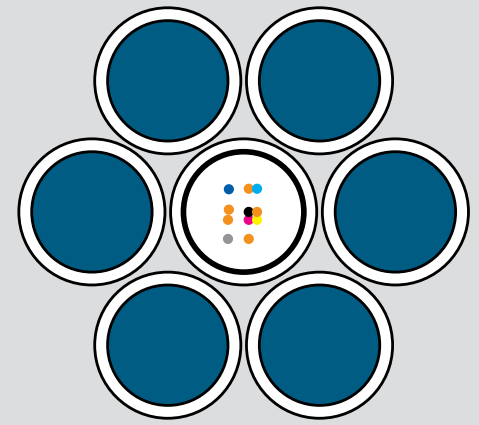


HAVE YOU CONSIDERED OUR A.R.S.EMBLIES?

We all know electrical distribution networks include complex constructions and designs as part of their Utility Standards. This result's in contractors regularly being confused and wasting time chasing around to find the right place to source the approved materials needed to do the job.

All Round Supplies can assist you with our range of **A.R.S.emblies**, engineered to make constructions easy. Catering for both Overhead and Underground constructions for Utilities such as Endeavour, Ausgrid, Essential and PWC, **A.R.S.emblies** offer the following benefits:

- One stock code per construction type for easy ordering.
- Only Utility Approved Materials included for peace of mind.
- Engineered to meet Utility construction designs standards.
- Save time and effort as you don't have to source individual components.
- Reduce the chance of forgetting materials in the field.
- Multiple kits can be packaged to meet project specific requirements.
- **A.R.S.emblies** include all of the materials that are not variable.



TYPE OF SPECIAL OPTICAL FIBRE CABLES FOR ELECTRICAL POWER LINES:

OPGW (Optical Fibre Composite Overhead Ground Wire)

OPGW cables have the dual functions of ground wire with communication capabilities.

OPPC (Optical Fibre Composite Phase Conductor)

OPPC cables have the dual functions performance functions of phase conductors with communication capabilities.

ADSS (all-dielectric self-supported cables)

ADSS cables are a kind of non-metal optical fibre cables suspended directly between two points without any supporting elements.

PRODUCT INDEX

Transmission Construction Diagram	5	Earthing	18
OPGW Assemblies	6	Gain Blocks	19
66kV Wood Pole Construction	7	Hardex Fittings	19
66kV Concrete Pole Construction	8	Heatshrink	19
132kV Concrete Pole Construction	9	Insulators	19
Transmission Ground Stays	10	Links and Lugs	19
Transmission Aerial Stays	10	Nuts and Washers - Galvanised	19
Stay Constructions- Transmission Ground Stays	11	Nuts and Washers - Stainless	20
Stay Constructions- Transmission Aerial Stays	11	Nuts and Washers - Zinc Plated	20
33kV UG/OH Construction Diagram	12	OPGW - Downlead Cushions	20
Overhead Earth Wire Constructions	13	OPGW - Deadend, Suspension Unit, Dampers	20
Timber Pole UG/OH Constructions	13	OPGW - Splice Enclosures	20
Concrete Pole UG/OH Constructions	14	OPGW - Brackets	20
Banding	16	Saddles	20
Coachscrew	16	Other	21
Eye Bolts - Galvanised	16	Pole Bands	21
Bolts - Galvanised (M12)	16	Pole Steps	21
Bolts - Galvanised (M16)	17	Setscrew - Stainless Steel	21
Bolts - Galvanised (M20) - Kingbolt	17	Stay Wire	22
Brackets	17	Stays	22
Clamps and Connectors	18	Surge Arrester/Diverter	22
Conductor and Cable	18	Termination Kits	22
Cover Guard	18	Publications and Supporting Materials	23
Crossarms	18		

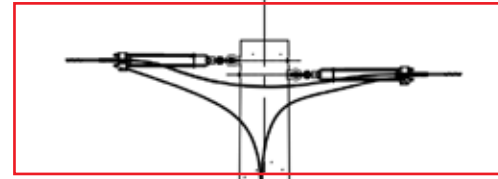


TRANSMISSION CONSTRUCTIONS

1

Overhead Earth Wire Construction
(Refer to page 6)

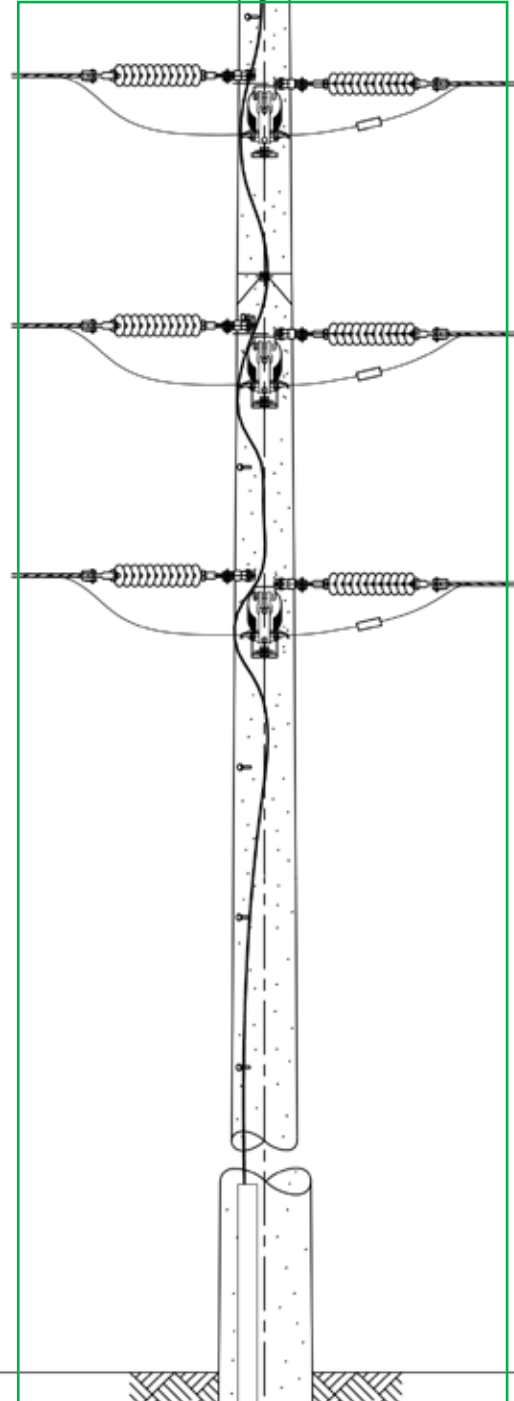
Add conductor and pole specific fittings



2

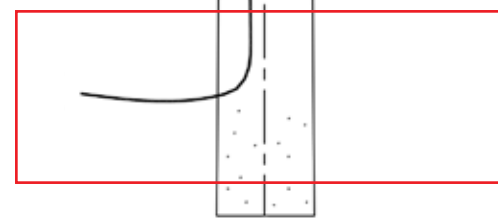
Transmission Construction
(Refer to page 7 to 9)

Add conductor and pole specific fittings



Earthing

Materials as required



1

OVERHEAD EARTH WIRE CONSTRUCTIONS

OPGW Assemblies

TYPE	Description	Code	Buy Unit	Unit of Measure
OPGW Type 1	ENDOHEW, TYPE OPGW 1 (18.1MM OPGW)	A1085	1 Unit	Kit
	Excludes: - M20 Kingbolt - Suit Pole*		2	Each
OPGW Type 2	ENDOHEW, TYPE OPGW 2 (18.1MM OPGW)	A1086	1 Unit	Kit
	Excludes: - Pole Band - Suit Pole*		2	Each
OPGW Type 3	ENDOHEW, TYPE OPGW 3 (18.1MM 96F OPGW)	A1087	1 Unit	Kit
	Excludes: - Pole Band - Suit Pole*		2	Each
OPGW Type 4	ENDOHEW, TYPE OPGW 4 (18.1MM 96F OPGW)	A1088	1 Unit	Kit
	Excludes: - Pole Band - Suit Pole*		1	Each

* Refer to Accessories section from page 15 in this brochure or refer to the Bare Conductor Product Catalogue.



2

TRANSMISSION CONSTRUCTIONS

66kV Timber Pole Constructions

Construction Number	Description	Code	Qty	Unit of Measure
61T	ENDTRBARE 61T (33/66kV DELTA LINE POST)	A1074	1 Unit	Kit
	Excludes: - Armour Grip Suspension Unit - Suit Mains* - M20 Kingbolt - Suit Pole (Insulators)* - Earthing Materials - below ground level*		3 6 A/R	Each Each Each
62T	ENDTRBARE 62T (33/66kV VERTICAL LINE POST)	A1076	1 Unit	Kit
	Excludes: - Armour Grip Suspension Unit - Suit Mains* - M20 Kingbolt - Suit Pole (Insulators)* - Earthing Materials - below ground level*		3 6 A/R	Each Each Each
63T	ENDTRBARE 63T (33/66kV VERT THROUGH STRN)	A1078	1 Unit	Kit
	Excludes: - Preformed Deadend - Suit Mains* - Clevis Thimble - Suit Mains* - Trunnion Suspension Clamp - Suit Mains* - Non-Tension Sleeve - Suit Mains* - M20 Eyebolt - Suit Pole (Insulators)* - M20 Kingbolt - Suit Pole (Insulators)* - Earthing Materials - below ground level*		6 6 3 3 6 6 A/R	Each Each Each Each Each Each Each
64T	ENDTRBARE 64T (33/66kV VERT THROUGH STRN)	A1080	1 Unit	Kit
	Excludes: - Preformed Deadend - Suit Mains* - Clevis Thimble - Suit Mains* - Non-Tension Sleeve - Suit Mains* - M20 Eyebolt - Suit Pole (Insulators)* - Earthing Materials - below ground level*		6 6 3 6 A/R	Each Each Each Each Each
65T	ENDTRBARE 65T (33/66kV VERT ANGLE SUSP)	A1082	1 Unit	Kit
	Excludes: - Double Suspension Unit - Suit Mains* - M20 Eyebolt - Suit Pole (Insulators)* - Earthing Materials - below ground level*		3 3 A/R	Each Each Each
66T	ENDTRBARE 66T (33/66kV DELTA THROUGH STRN)	A1084	1 Unit	Kit
	Excludes: - Trunnion suspension clamp - Suit Mains* - Preformed Deadend - Suit Mains* - Clevis Thimble - Suit Mains* - Non-Tension Sleeve - Suit Mains* - M20 Eyebolt - Suit Pole (Insulators)* - M20 Kingbolt - Suit Pole (Insulators & Crossarm)* - Earthing Materials - below ground level*		1 6 6 3 1 3 A/R	Each Each Each Each Each Each Each

NOTE: Above kits do not include wood poles.

*Refer to Accessories section from page 15 in this brochure or refer to the Bare Conductor Product Catalogue.





TRANSMISSION CONSTRUCTIONS

66kV Concrete Pole Constructions

Construction Number	Description	Code	Qty	Unit of Measure
61C	ENDTRBARE 61C (33/66kV DELTA LINE POST)	A1073	1 Unit	Kit
	Excludes: - Armour Grip Suspension Unit - Suit Mains* - M20 Kingbolt - Suit Pole (Insulators)* - 7/4.50 AAC Conductor (Pole Earth Connections)* - Earthing Materials - below ground level*		3 6 A/R A/R	Each Each Metre Each
62C	ENDTRBARE 62C (33/66kV VERTICAL LINE POST)	A1075	1 Unit	Kit
	Excludes: - Armour Grip Suspension Unit - Suit Mains* - M20 Kingbolt - Suit Pole (Insulators)* - 7/4.50 AAC Conductor (Pole Earth Connections)* - Earthing Materials - below ground level*		3 6 A/R A/R	Each Each Metre Each
63C	ENDTRBARE 63C (33/66kV VERT THROUGH STRN)	A1077	1 Unit	Kit
	Excludes: - Preformed Deadend - Suit Mains* - Clevis Thimble - Suit Mains* - Trunnion Suspension Clamp - Suit Mains* - Non-Tension Sleeve* - Pole Bands - Suit Pole* - M20 Kingbolt - Suit Pole (Insulators)* - 7/4.50 AAC Conductor (Pole Earth Connections)* - Earthing Materials - below ground level*		6 6 3 3 6 6 A/R A/R	Each Each Each Each Each Each Metre Each
64C	ENDTRBARE 64C (33/66kV VERT THROUGH STRN)	A1079	1 Unit	Kit
	Excludes: - Preformed Deadend - Suit Mains* - Clevis Thimble - Suit Mains* - Non-Tension Sleeve* - Pole Bands - Suit Pole* - 7/4.50 AAC Conductor (Pole Earth Connections)* - Earthing Materials - below ground level*		6 6 3 6 A/R A/R	Each Each Each Each Metre Each
65C	ENDTRBARE 65C (33/66kV VERT ANGLE SUSP)	A1081	1 Unit	Kit
	Excludes: - Double Suspension Unit - Suit Mains* - Pole Bands - Suit Pole* - 7/4.50 AAC Conductor (Pole Earth Connections)* - Earthing Materials - below ground level*		3 3 A/R A/R	Each Each Metre Each
66C	ENDTRBARE 66C (33/66kV DELTA THROUGH STRN)	A1083	1 Unit	Kit
	Excludes: - Trunnion Suspension Clamp - Suit Mains* - Preformed Deadend - Suit Mains* - Clevis Thimble - Suit Mains* - Non-Tension Sleeve - Suit Mains* - Pole Bands - Suit Pole* - M20 Kingbolt - Suit Pole (Insulators & Crossarm)* - M16 bolt - Suit Pole (Crossarm braces)* - 7/4.50 AAC Conductor (Pole Earth Connections)* - Earthing Materials - below ground level*		1 6 6 3 2 3 1 A/R A/R	Each Each Each Each Each Each Each Metre Each

NOTE: Above kits do not include concrete poles.

* Refer to Accessories section from page 15 in this brochure or refer to the Bare Conductor Product Catalogue.



TRANSMISSION CONSTRUCTIONS

132kV Concrete Pole Constructions

Construction Number	Description	Code	Qty	Unit of Measure
81C	ENDTRBARE 81C (132kV DELTA LINE POST)	A1095	1 Unit	Kit
	Excludes: - Armour Grip Suspension Unit - Suit Mains* - M20 Kingbolt - Suit Pole (Insulators)* - 7/4.50 AAC Conductor (Pole Earth Connections)* - Earthing Materials - below ground level*		3 6 A/R A/R	Each Each Metre Each
82C	ENDTRBARE 82C (132kV VERT LINE POST)	A1096	1 Unit	Kit
	Excludes: - Armour Grip Suspension Unit - Suit Mains* - M20 Kingbolt - Suit Pole (Insulators)* - 7/4.50 AAC Conductor (Pole Earth Connections)* - Earthing Materials - below ground level*		3 6 A/R A/R	Each Each Metre Each
83C	ENDTRBARE 83C (132kV VERT THROUGH STRN)	A1097	1 Unit	Kit
	Excludes: - Preformed Deadend - Suit Mains* - Clevis Thimble - Suit Mains* - Trunnion Suspension Clamp - Suit Mains* - Non-Tension Sleeve* - Pole Bands - Suit Pole* - M20 Kingbolt - Suit Pole (Insulators)* - 7/4.50 AAC Conductor (Pole Earth Connections)* - Earthing Materials - below ground level*		6 6 3 3 6 6 A/R A/R	Each Each Each Each Each Each Metre Each
84C	ENDTRBARE 84C (132kV VERT THROUGH STRN)	A1098	1 Unit	Kit
	Excludes: - Preformed Deadend - Suit Mains* - Clevis Thimble - Suit Mains* - Non-Tension Sleeve* - Pole Bands - Suit Pole* - 7/4.50 AAC Conductor (Pole Earth Connections)* - Earthing Materials - below ground level*		6 6 3 6 A/R A/R	Each Each Each Each Metre Each
85C	ENDTRBARE 85C (132kV VERT ANGLE SUSP)	A1099	1 Unit	Kit
	Excludes: - Double Suspension Unit - Suit Mains* - Pole Bands - Suit Pole* - 7/4.50 AAC Conductor (Pole Earth Connections)* - Earthing Materials - below ground level*		3 3 A/R A/R	Each Each Metre Each
86C	ENDTRBARE 86C (132kV DELTA THRU STRN)	A1100	1 Unit	Kit
	Excludes: - Trunnion Suspension Clamp - Suit Mains* - Preformed Deadend - Suit Mains* - Clevis Thimble - Suit Mains* - Non-Tension Sleeve* - Pole Bands - Suit Pole* - M20 Kingbolt - Suit Pole (Insulators & crossarm)* - M16 bolt - Suit pole (Crossarm braces) - 7/4.50 AAC Conductor (Pole Earth Connections)* - Earthing Materials - below ground level*		1 6 6 3 2 3 1 A/R A/R	Each Each Each Each Each Each Metre Each

NOTE: Above kits do not include concrete poles.

* Refer to Accessories section from page 15 in this brochure or refer to the Bare Conductor Product Catalogue.

TRANSMISSION GROUND STAYS

1

Ground Stay Constructions

A0982 4/G no GY4 insulator

A0983 4/G with GY4 insulator

A0984 6/G no GY4 insulator

A0985 6/G with GY4 insulator

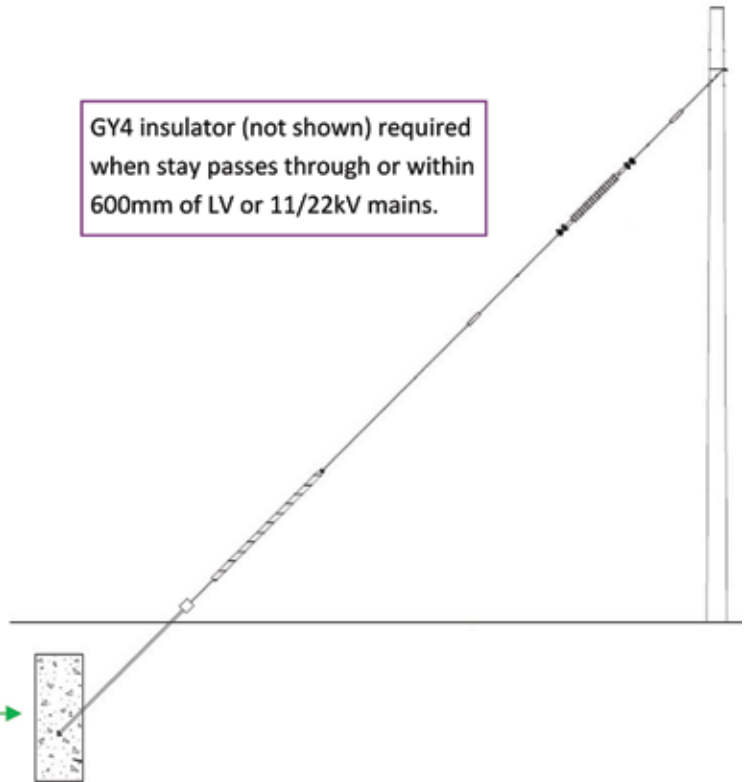
Stay Wire

00444 12mm for 4/G stay

00456 16mm for 6/G

Anchorage not included

GY4 insulator (not shown) required when stay passes through or within 600mm of LV or 11/22kV mains.



TRANSMISSION AERIAL STAYS

2

Aerial Stay Constructions

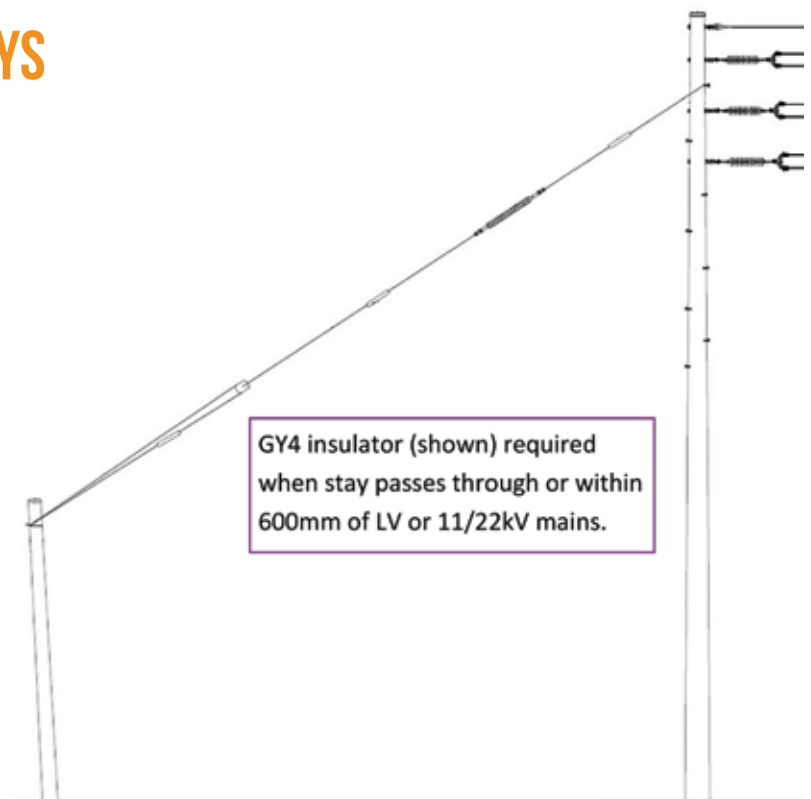
A0986 4/0 no GY4 insulator

A0987 4/0 with GY4 insulator

Stay Wire

00444 12mm for 4/0 stay

GY4 insulator (shown) required when stay passes through or within 600mm of LV or 11/22kV mains.



1

GROUND STAY CONSTRUCTIONS

Transmission Ground Stays

Construction Number	Description	Code	Qty	Unit of Measure
4/G no GY4	ENDTR GROUND STAY 4/G NO GY4 INSULATOR	A0982	1 Unit	Kit
	Excludes: - 12mm Stay Wire*	00444	A/R	Metre
4/G with GY4	ENDTR GROUND STAY 4/G WITH GY4 INSULATOR	A0983	1 Unit	Kit
	Excludes: - 12mm Stay Wire*	00444	A/R	Metre
6/G no GY4	ENDTR GROUND STAY 6/G NO GY4 INSULATOR	A0984	1 Unit	Kit
	Excludes: - 16mm Stay Wire*	00456	A/R	Metre
6/G with GY4	ENDTR GROUND STAY 6/G WITH GY4 INSULATOR	A0985	1 Unit	Kit
	Excludes: - 16mm Stay Wire*	00456	A/R	Metre

2

AERIAL STAY CONSTRUCTIONS

Transmission Aerial Stays

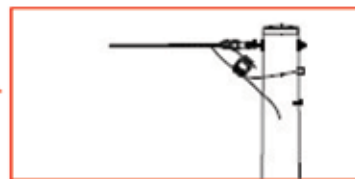
Construction Number	Description	Code	Qty	Unit of Measure
4/0 no GY4	ENDTR AERIAL STAY 4/0 NO GY4 INSULATOR	A0986	1 Unit	Kit
	Excludes: - 12mm Stay Wire*	00444	A/R	Metre
4/0 with GY4	ENDTR AERIAL STAY 4/0 WITH GY4 INSULATOR	A0987	1 Unit	Kit
	Excludes: - 12mm Stay Wire*	00444	A/R	Metre



33KV UG/OH CONSTRUCTION

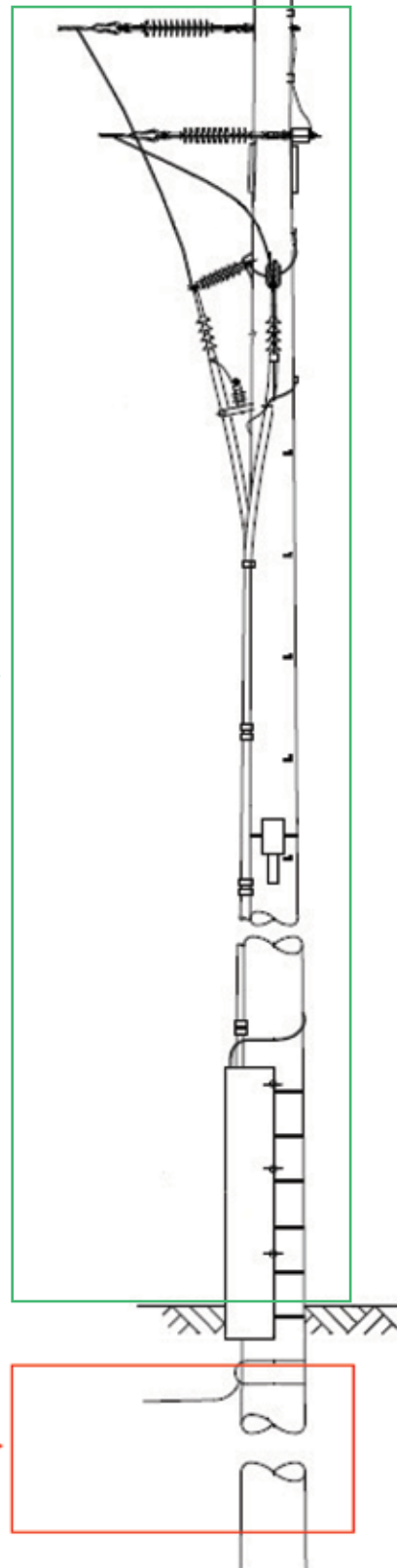
1

Overhead Earth Wire Construction
(Refer to page 6)
Add conductor and pole specific fittings.

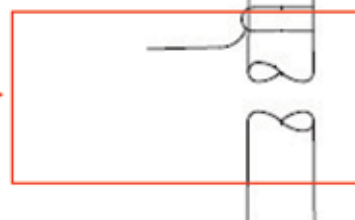


2

UG/OH construction



Earthing
Materials as required.



1

OVERHEAD EARTH WIRE CONSTRUCTIONS

Refer to page 6 for construction options.

2

TIMBER POLE UG/OH CONSTRUCTION

Construction Number	Description	Code	Qty	Unit of Measure
50T (1c 630mm ² XLPE)	ENDTRUGOH 50T (33kV 1c 630 XLPE)	A1092	1 Unit	Kit
	Excludes: - M20 Kingbolt - Suit Pole* - M20 Eyebolt - Suit Pole (Insulators)* - M16 bolt - Suit pole (Crossarm braces)* - Preformed Deadend - Suit Mains* - Clevis Thimble - Suit Mains* - Lug - Suit Mains* - Insulated pole cover - Earthing Materials - below ground level*		1 1 1 3 3 3 4 A/R	Each Each Each Each Each Each Each Each
50T (1c 800mm ² XLPE)	ENDTRUGOH 50T (33kV 1c 800 XLPE)	A1093	1 Unit	Kit
	Excludes: - M20 Kingbolt - Suit Pole* - M20 Eyebolt - Suit Pole (Insulators)* - M16 bolt - Suit pole (Crossarm braces)* - Preformed Deadend - Suit Mains* - Clevis Thimble - Suit Mains* - Lug - Suit Mains* - Insulated pole cover - Earthing Materials - below ground level*		1 1 1 3 3 3 4 A/R	Each Each Each Each Each Each Each Each
50T (1c 1200mm ² XLPE)	ENDTRUGOH 50T (33kV 1c 1200 XLPE)	A1094	1 Unit	Kit
	Excludes: - M20 Kingbolt - Suit Pole* - M20 Eyebolt - Suit Pole (Insulators)* - M16 bolt - Suit pole (Crossarm braces)* - Preformed Deadend - Suit Mains* - Clevis Thimble - Suit Mains* - Lug - Suit Mains* - Insulated pole cover - Earthing Materials - below ground level*		1 1 1 3 3 3 4 A/R	Each Each Each Each Each Each Each Each

* Refer to Accessories section from page 15 in this brochure or refer to the Bare Conductor Product Catalogue.




2

CONCRETE POLE UG/OH CONSTRUCTION

Construction Number	Description	Code	Qty	Unit of Measure
50C (1c 630mm ² XLPE)	ENDTRUGOH 50C (33KV 1C 630 XLPE)	A1089	1 Unit	Kit
	Excludes: - M20 Kingbolt - Suit Pole* - M20 Eyebolt - Suit Pole (Insulators)* - M16 bolt - Suit pole (Crossarm braces)* - Preformed Deadend - Suit Mains* - Clevis Thimble - Suit Mains* - Lug - Suit Mains* - Insulated pole cover - Earthing Materials - below ground level*		1 1 1 3 3 3 4 A/R	Each Each Each Each Each Each Each Each
50C (1c 800mm ² XLPE)	ENDTRUGOH 50C (33KV 1C 800 XLPE)	A1090	1 Unit	Kit
	Excludes: - M20 Kingbolt - Suit Pole* - M20 Eyebolt - Suit Pole (Insulators)* - M16 bolt - Suit pole (Crossarm braces)* - Preformed Deadend - Suit Mains* - Clevis Thimble - Suit Mains* - Lug - Suit Mains* - Insulated pole cover - Earthing Materials - below ground level*		1 1 1 3 3 3 4 A/R	Each Each Each Each Each Each Each Each
50C (1c 1200mm ² XLPE)	ENDTRUGOH 50C (33KV 1C 1200 XLPE)	A1091	1 Unit	Kit
	Excludes: - M20 Kingbolt - Suit Pole* - M20 Eyebolt - Suit Pole (Insulators)* - M16 bolt - Suit pole (Crossarm braces)* - Preformed Deadend - Suit Mains* - Clevis Thimble - Suit Mains* - Lug - Suit Mains* - Insulated pole cover - Earthing Materials - below ground level*		1 1 1 3 3 3 4 A/R	Each Each Each Each Each Each Each Each

* Refer to Accessories section from page 15 in this brochure or refer to the Bare Conductor Product Catalogue.



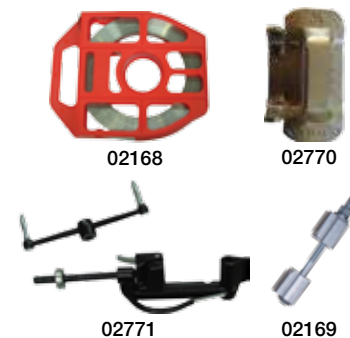


ENDEAVOUR ENERGY TRANSMISSION CONSTRUCTION MATERIALS



Banding

Description	Code	Buy Unit	Unit of Measure
STRAP/BAND, STAINLESS STEEL 19.05MM	02168	1 Unit	Roll-30.5m
BOLT/CLAMP, FOR 19.05MM S/S STRAP	02169	1 Unit	Each
BUCKLE, 19.05MM FOR S/S STRAP/BAND	02770	1 Unit	Each
TOOL, BAND-IT FOR 6-19MM S/S STRAP/BAND	02771	1 Unit	Each



Coachscrew

Description	Code	Buy Unit	Unit of Measure
SCREW, COACH M16 100MM	00726	1 Unit	Each
SCREW, COACH M16 130MM	02897	1 Unit	Each



Eye Bolts - Galvanised

Description	Code	Buy Unit	Unit of Measure
BOLT, EYE M20X200MM GALV STEEL	00558	1 Unit	Each
BOLT, EYE M20X250MM GALV STEEL	00559	1 Unit	Each
BOLT, EYE M20X300MM GALV STEEL	00560	1 Unit	Each
BOLT, EYE M20X350MM GALV STEEL	00435	1 Unit	Each
BOLT, EYE M20X400MM GALV STEEL	00427	1 Unit	Each
BOLT, EYE M20X450MM GALV STEEL	00945	1 Unit	Each
BOLT, EYE M20X500MM GALV STEEL	00561	1 Unit	Each
BOLT, EYE M20X550MM GALV STEEL	00946	1 Unit	Each
BOLT, EYE M20X600MM GALV STEEL	00562	1 Unit	Each
BOLT, EYE M20X650MM GALV STEEL	06768	1 Unit	Each
BOLT, EYE M20X700MM GALV STEEL	00563	1 Unit	Each
BOLT, EYE M20X750MM GALV STEEL	07030	1 Unit	Each



Bolts - Galvanised (M12)

Description	Code	Buy Unit	Unit of Measure
BOLT, HD M12 X 35MM GAL	05690	1 Unit	Each
BOLT, HD M12 X 40MM GAL	00517	1 Unit	Each
BOLT, HD M12 X 100MM GAL	00396	1 Unit	Each
BOLT, HD M12 X 130MM GAL	00388	1 Unit	Each
BOLT, HD M12 X 150MM GAL	00423	1 Unit	Each
BOLT, HD M12 X 180MM GAL	00441	1 Unit	Each
BOLT, HD M12 X 220MM GAL	00778	1 Unit	Each
BOLT, HD M12 X 260MM GAL	03274	1 Unit	Each
BOLT, HD M12 X 300MM GAL	02562	1 Unit	Each
BOLT, HD M12 X 350MM GAL	02807	1 Unit	Each
BOLT, HD M12 X 400MM GAL	02535	1 Unit	Each



Bolts - Galvanised (M16)

Description	Code	Buy Unit	Unit of Measure
BOLT, HD M16 X 130MM GAL	00565	1 Unit	Each
BOLT, HD M16 X 150MM GAL	00433	1 Unit	Each
BOLT, HD M16 X 160MM GAL	05213	1 Unit	Each
BOLT, HD M16 X 180MM GAL	00566	1 Unit	Each
BOLT, HD M16 X 200MM GAL	02529	1 Unit	Each
BOLT, HD M16 X 220MM GAL	02167	1 Unit	Each
BOLT, HD M16 X 240MM GAL	06899	1 Unit	Each
BOLT, HD M16 X 260MM GAL	00567	1 Unit	Each
BOLT, HD M16 X 300MM GAL	00568	1 Unit	Each
BOLT, HD M16 X 325MM GAL	02528	1 Unit	Each
BOLT, HD M16 X 350MM GAL	00569	1 Unit	Each
BOLT, HD M16 X 400MM GAL	00570	1 Unit	Each
BOLT, HD M16 X 450MM GAL	00571	1 Unit	Each
BOLT, HD M16 X 550MM GAL	06968	1 Unit	Each
BOLT, HD M16 X 600MM GAL	06718	1 Unit	Each
BOLT, HD M16 X 650MM GAL	03791	1 Unit	Each
BOLT, HD M16 X 700MM GAL	07062	1 Unit	Each



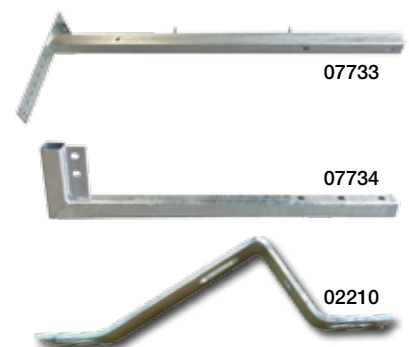
Bolts - Galvanised (M20) - Kingbolt

Description	Code	Buy Unit	Unit of Measure
BOLT, HD M20 X 65MM GAL	06717	1 Unit	Each
BOLT, HD M20 X 160MM GAL	02806	1 Unit	Each
BOLT, HD M20 X 180MM GAL	00789	1 Unit	Each
BOLT, HD M20 X 220MM GAL	00393	1 Unit	Each
BOLT, HD M20 X 300MM GAL	00425	1 Unit	Each
BOLT, HD M20 X 350MM GAL	00387	1 Unit	Each
BOLT, HD M20 X 375MM GAL	06268	1 Unit	Each
BOLT, HD M20 X 400MM GAL	00417	1 Unit	Each
BOLT, HD M20 X 450MM GAL	00411	1 Unit	Each
BOLT, HD M20 X 500MM GAL	00419	1 Unit	Each
BOLT, HD M20 X 550MM GAL	00432	1 Unit	Each
BOLT, HD M20 X 600MM GAL	00580	1 Unit	Each
BOLT, HD M20 X 60MM GAL	05612	1 Unit	Each
BOLT, HD M20 X 650MM GAL	00581	1 Unit	Each
BOLT, HD M20 X 700MM GAL	00582	1 Unit	Each
BOLT, HD M20 X 750MM GAL	07029	1 Unit	Each



Brackets

Description	Code	Buy Unit	Unit of Measure
BRACKET, OHEW ANGLE EXTENSION IE	06948	1 Unit	Each
BRACKET, OHEW TERM/SUSPENSION	07733	1 Unit	Each
BRACKET, OVERHEAD EARTH WIRE RAISER	07734	1 Unit	Each
BRACKET, 33KV CABLE/DIVERTER SUP CONC	06170	1 Unit	Each
BRACKET, 33KV POLE TOP SURGE DIVERTER	02210	1 Unit	Each



Clamps and Connectors

Description	Code	Buy Unit	Unit of Measure
CLAMP, ALUMINIUM ANGLE 16-25MM 34KN	02558	1 Unit	Each
CLAMP, BAIL AL 7/2.25-19/3.75 2 BOLT S/S	03753	1 Unit	Each
CLAMP, CABLE 50-275 UNIVERSAL	02449	1 Unit	Each
CLAMP, CABLE 66-90 PLASTIC 2 BOLT	03706	1 Unit	Pair
CLAMP, PG 7/2.50-19/3.75 AL 2B PS SS	00052	1 Unit	Each
CONNECTOR, SPLIT BOLT B24 35 BRASS	00853	1 Unit	Each
CONNECTOR, SPLIT BOLT B26 95 BRASS	00246	1 Unit	Each



Conductor and Cable

Description	Code	Buy Unit	Unit of Measure
CABLE, OPGW 48 FIBRE LOOSE TUBE	06936	3000mtrs	Metre
CABLE, LV 1.5 CU 5C SELF SUPPORT HARDEX	02453	1000mtrs	Metre
CONDUCTOR, 7/4.50 (111) AAC MERCURY	06998	1500mtrs	Metre
CONDUCTOR, 7/4.50 (111) AAC MERCURY CG	00662	1500mtrs	Metre
CABLE, LV 95 AL 1C XLPE/PVC NAT/BLACK	04604	100mtrs	Metre
CABLE, LV 70 CU 1C PVC BLACK COMPACTED	02467	100mtrs	Metre
CABLE, LV 70 CU 1C BARE COMPACTED	00207	250mtrs	Metre

*MOQ's applies to cable and conductor. Buy unit is typical pack length.



Cover Guard

Description	Code	Buy Unit	Unit of Measure
COVER GUARD, POLE 33KV CONCRETE IE	02650	1 Unit	Each
COVER GUARD, POLE 33KV INSULATING IE	08028	1 Unit	Each



Crossarms

Description	Code	Buy Unit	Unit of Measure
CROSSARM BRACE, 920MM ANGLE IE	00754	1 Unit	Each
CROSSARM, STEEL TYPE C3 150X150X3000	02526	1 Unit	Each
#CROSSARM, WOOD TYPE 3 150X125X3300	02442	1 Unit	Each

#Setup fee may apply



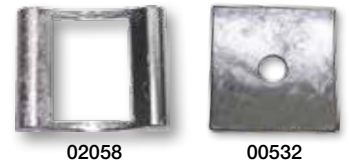
Earthing

Description	Code	Buy Unit	Unit of Measure
CLIP, EARTH GALVANISED, M16-M18	03070	1 Unit	Each
CLIP, EARTH GALVANISED, M20-M22	02636	1 Unit	Each
BATTEN, EARTH PLASTIC	03280	1 Unit	Each
MASTIC, SUPERSOFT 3KG DENSO 410	02565	1 Unit	Pack-3kg
TAPE, PVC SELF ADHESIVE OVERWRAP	02566	1 Unit	Roll-150m
LINK, COMPRESSION 95 AL/70 CU	03870	1 Unit	Each
HEATSHRINK, TUBE LV 35/12MW BLK LND 0.3M	05274	300mm length	Each
CONNECTOR "6" ROD 13-15 TAP 70	02138	1 Unit	Each
CONNECTOR "C" CABLE 50-70 WIDE JAW	03967	1 Unit	Each
ROD, EARTH CU BONDED 15MM 2.44M POINTED	00254	1 Unit	Each
COUPLER, 15MM EARTH ROD CU POINTED	02141	1 Unit	Each
LUG, COMP 70 CU M12 1 HOLE	00016	1 Unit	Each



Gain Blocks

Description	Code	Buy Unit	Unit of Measure
GAIN BLOCK, 100MM TRANSFORMER/CROSSARM	00532	1 Unit	Each
GAIN BLOCK, 125MM CROSSARM	02058	1 Unit	Each



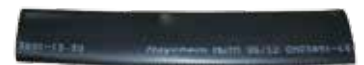
Hardex Fittings

Description	Code	Buy Unit	Unit of Measure
BOX, TERMINATION HARDEX PILOT CABLE	02556	1 Unit	Each
PREFORM TIE, TYGARD HARDEX PILOT CABLE	02591	1 Unit	Each
SUSPENSION, ASSEMBLY 66KN HARDEX	02553	1 Unit	Each
BRACKET, SUPPORT OVERHEAD EARTH WIRE-OEW	02554	1 Unit	Each



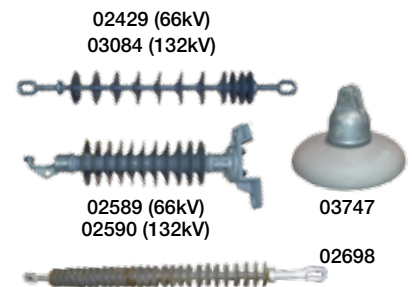
Heatshrink

Description	Code	Buy Unit	Unit of Measure
HEATSHRINK, TUBE LV 35/12 BLK LINED 300MM	05274	1 Unit	LGTH 300MM



Insulators

Description	Code	Buy Unit	Unit of Measure
INSULATOR, 66KV POLY LONG ROD EYE/EYE IE	02429	1 Unit	Each
INSULATOR, 66KV POLYMER LINE POST	02589	1 Unit	Each
INSULATOR, 132KV POLY LONG ROD EYE/EYE	03084	1 Unit	Each
INSULATOR, 132KV POLYMER LINE POST	02590	1 Unit	Each
INSULATOR, 138KV STAY POLYPACE 220KN	02698	1 Unit	Each
INSULATOR, TONGUE & CLEVIS 70KN PORCELAIN	03747	1 Unit	Each



Links and Lugs

Description	Code	Buy Unit	Unit of Measure
LINK, COMPRESSION 95 AL/70 CU	03870	1 Unit	Each
LUG, COMPRESSION 120 AL M12 1 HOLE	00147	1 Unit	Each
LUG, COMPRESSION 185 CU M12 1 HOLE	02217	1 Unit	Each
LUG, COMPRESSION 630 CU BLANK SP	03086	1 Unit	Each
LUG, COMPRESSION 800 CU SEALED BLANK	03423	1 Unit	Each
LUG, COMPRESSION 1200 CU SEALED BLANK	06921	1 Unit	Each
LUG, COMP 70 CU M12 1 HOLE	00016	1 Unit	Each



Nuts and Washers - Galvanised

Description	Code	Buy Unit	Unit of Measure
NUT, EYE M20 GALV STEEL	00428	1 Unit	Each
NUT, M20, HEX, GAL	00429	1 Unit	Each
WASHER, SQR FLAT (50X50) M12 GALV STEEL	00391	1 Unit	Each
WASHER, SQR FLAT (50X50) M16 GALV STEEL	00392	1 Unit	Each
WASHER, SQR FLAT (50X50) M20 GALV STEEL	07044	1 Unit	Each
WASHER, SQR FLAT (75X75) M20 GALV STEEL	00390	1 Unit	Each



Nuts and Washers - Stainless

Description	Code	Buy Unit	Unit of Measure
NUT, M12, HEX, SS	00019	1 Unit	Each
WASHER, COIL SPRING M12-M16 STAIN STEEL	00404	1 Unit	Each
WASHER, COIL SPRING M20-M24 STAIN STEEL	00403	1 Unit	Each
WASHER, M12, ROUND, SS	00020	1 Unit	Each
WASHER, M12, SPRING, SS	00751	1 Unit	Each



Nuts and Washers - Zinc Plated

Description	Code	Buy Unit	Unit of Measure
NUT, LOCK, M16, HEX, ZINC PLATED	07006	1 or Pack of 100	Each
NUT, LOCK, M20, HEX, ZINC PLATED	06988	1 or Pack of 100	Each



OPGW - Download Cushions

Description	Code	Buy Unit	Unit of Measure
DOWNLEAD CUSHION,16.70-19.10 AL STRAP	07730	1 Unit	Pair
DOWNLEAD CUSHION,16.70-19.10 AL FERRULE	07731	1 Unit	Pair
DOWNLEAD CUSHION,16.70-19.10 AL T110-150	06870	1 Unit	Pair
DOWNLEAD CUSHION,16.70-19.10 AL T160-200	07735	1 Unit	Pair



OPGW - Deadend, Suspension Unit, Dampers

Description	Code	Buy Unit	Unit of Measure
OPGW DEADEND, WEDGE TYPE 18.01-18.50 2E	05837	1 Unit	Each
OPGW SUSPENSION UNIT, 18.04-18.49 DIA LH	05833	1 Unit	Each
VIBRATION DAMPER, SPIRAL 14.31-19.30 OPGW	06967	1 or Box of 25	Each



OPGW - Splice Enclosures

Description	Code	Buy Unit	Unit of Measure
OPGW SPLICE, COYOTE 48 FIBRE POLE MNT	05836	1 Unit	Each
OPGW SPLICE, COYOTE 48 FIBRE TOWER MNT	07732	1 Unit	Each



OPGW - Brackets

Description	Code	Buy Unit	Unit of Measure
BRACKET, FIBRE OPTIC CABLE STORAGE 530	06419	1 Unit	Each
BRACKET, OHEW TERM/SUSPENSION	07733	1 Unit	Each
BRACKET, OVERHEAD EARTH WIRE RAISER	07734	1 Unit	Each



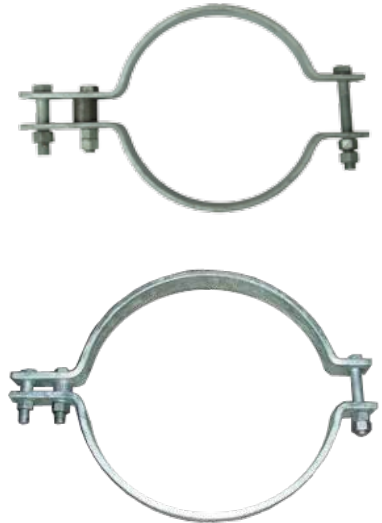
Saddles

Description	Code	Buy Unit	Unit of Measure
SADDLE, 16MM GALV STEEL	00259	1 Unit	Each
SADDLE, 25MM GALV STEEL	00519	1 Unit	Each
SADDLE, 32MM GALV STEEL	00512	1 Unit	Each
SADDLE, 40MM GALV STEEL	03666	1 Unit	Each



Pole Bands

Description	Code	Buy Unit	Unit of Measure
BAND, POLE 66KN 260 DIAMETER 2 PIECE	02630	1 Unit	Each
BAND, POLE 66KN 290 DIAMETER 2 PIECE	02614	1 Unit	Each
BAND, POLE 66KN 320 DIAMETER 2 PIECE	02619	1 Unit	Each
BAND, POLE 66KN 350 DIAMETER 2 PIECE	02835	1 Unit	Each
BAND, POLE 66KN 375 DIAMETER 2 PIECE	02836	1 Unit	Each
BAND, POLE 66KN 400 DIAMETER 2 PIECE	03108	1 Unit	Each
BAND, POLE 128KN 350 DIAMETER 2 PIECE	07056	1 Unit	Each
BAND, POLE 128KN 400 DIAMETER 2 PIECE	06890	1 Unit	Each
BAND, POLE 128KN 425 DIAMETER 2 PIECE	05603	1 Unit	Each
BAND, POLE 128KN 450 DIAMETER 2 PIECE	03316	1 Unit	Each
BAND, POLE 128KN 475 DIAMETER 2 PIECE	06894	1 Unit	Each
BAND, POLE 128KN 500 DIAMETER 2 PIECE	03713	1 Unit	Each
BAND, POLE 128KN 525 DIAMETER 2 PIECE	06973	1 Unit	Each
BAND, POLE 128KN 550 DIAMETER 2 PIECE	06891	1 Unit	Each
BAND, POLE 128KN 600 DIAMETER 2 PIECE	06892	1 Unit	Each
BAND, POLE 128KN 650 DIAMETER 2 PIECE	06929	1 Unit	Each



Pole Steps

Description	Code	Buy Unit	Unit of Measure
POLE, STEP CONCRETE GALV STEEL M16	02426	1 or Box of 25	Each
POLE, STEP WOOD GALV STEEL DRIVE-IN	00737	1 or Box of 30	Each



Setscrews - Stainless Steel

Description	Code	Buy Unit	Unit of Measure
SETSCREW, HEX HD M12 X 25 SS	02527	1 Unit	Each
SETSCREW, HEX HD M12 X 30 SS	02894	1 Unit	Each
SETSCREW, HEX HD M12 X 40 SS	00017	1 Unit	Each
SETSCREW, HEX HD M12 X 50 SS	00018	1 Unit	Each



Other

Description	Code	Buy Unit	Unit of Measure
BALL TONGUE, 70KN 16MM HOLE	02833	1 Unit	Each
BALL TONGUE, 160KN 20MM HOLE	07051	1 Unit	Each
CHAIN LINK 70KN	03091	1 Unit	Each
CLEVIS BALL, 70KN CAST IRON	02525	1 or Box of 25	Each
CLEVIS, SOCKET 70KN M16 FORGED	02549	1 or Box of 25	Each
CLEVIS, SOCKET 160KN M20 FORGED	05826	1 Unit	Each
SHACKLE, BOW 70KN M16 CLEVIS BOLT	00880	1 or Box of 30	Each
SHACKLE, BOW 160KN M20 CLEVIS BOLT	04633	1 Unit	Each
SHEAVE, AL 54MM NECK 17MM HOLE	03107	1 or Box of 25	Each
STRAP, RIGHT ANGLE TWISTED	02750	1 Unit	Each
TONGUE, SOCKET 70KN CAST IRON	02547	1 or Box of 15	Each



Stay Wires

Description	Code	Buy Unit	Unit of Measure
WIRE, STAY 12MM	00444	1 or Drum of 100	Metre
WIRE, STAY 16MM	00456	1 or Drum of 100	Metre



Stays

Description	Code	Buy Unit	Unit of Measure
ROD, STAY M30X2800MM GALV STEEL	00453	1 Unit	Each
GUARD STAY/GUY, SLIT 25MM X 2.5M	00447	1 or Box of 50	Each
INSULATOR, STAY GY4	02427	1 or Box of 4	Each
LINK, DOUBLE PLATE W/- STAY SHEAVE	02739	1 Unit	Each
PREFORM SPLICE, 16MM WIRE ROPE	02600	1 or Box of 10	Each
PREFORM SPLICE, 7/4.00(12MM) SC/GZ	00448	1 or Box of 15	Each
INSULATOR, 138KV STAY POLYPACE 220KN	02698	1 Unit	Each



00448



00453



02739



02427

Surge Arrester/Diverter

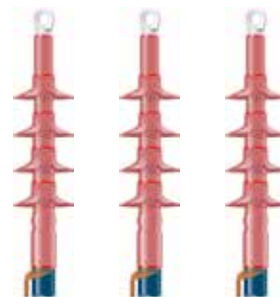
Description	Code	Buy Unit	Unit of Measure
DIVERTER, SURGE 6KV POLYMERIC (SCREEN)	02776	1 Unit	Each
DIVERTER, SURGE 33KV POLY (POLE TOP) IE	02775	1 Unit	Each



02775

Termination Kits

Description	Code	Buy Unit	Unit of Measure
TERM, 33KV 630-800 1C OUTDOOR XLPE HEAT	03009	1 Unit	Each
TERM, 33KV 800-1200 1C OUTDOOR XLPE HEAT	04232	1 Unit	Each



PUBLICATIONS & SUPPORTING MATERIAL

DO YOU NEED ELECTRICAL INFRASTRUCTURE MATERIALS FOR YOUR NEXT JOB OR PROJECT?

Why not let All Round Supplies save you the time and hassle of chasing around for the materials you need. We have an extensive range of Utility Approved materials in stock and if we don't have it we can order it in for you in no time flat.

With Branches in Prestons - Sydney, Newcastle, Nowra and Darwin, All Round Supplies is able to provide most of

our customer needs from the 2,300 stock lines we carry on the shelf. We cover the Utility Networks of Ausgrid, Endeavour Energy, Essential Energy, Ergon, Energex and Power and Water Corporation in the Northern Territory. If you are working on a Private Electrical Infrastructure Network in Mining, Industrial, Solar or Rail, more than likely All Round Supplies has the materials you need.

Find out more about how All Round Supplies can help you by contacting your nearest Branch on 1300 087 579 and requesting our product catalogues, some of which are:



Pole Mounted Transformer
Power and Water Corporation



Terminations, Joints & Elbows
Power and Water Corporation



Pole Mounted Transformer
Endeavour Energy



Padmount Substation
Essential Energy



Insulated Conductor Accessories
Medium Voltage Overhead



Bare Conductor Accessories
Overhead



Service Link
Level 2 ASP Product Catalogue



Safety Link
Product Catalogue



Numbers & Labels
Endeavour Energy & Ausgrid

**Sydney**

13 Progress Circuit,
Prestons, NSW, 2170
1300 087 579
sales@all-round-supplies.com.au

Melbourne

4/433 Hammond Road,
Dandenong South, VIC, 3175
1300 087 579
sales@all-round-supplies.com.au

Perth

70 Kent Way,
Malaga, WA, 6090
1300 087 579
sales@all-round-supplies.com.au

www.ars.com.au



**All Round
Supplies®**