



All Round
Supplies®

Image: ausgrid.flickr

Specialised Utility-Workers' Tools

TOOLING CATALOGUE

All Round Supplies is your one-stop specialist distributor for all the materials an electrical contractor needs. We carry an extensive range of utility-approved products for use on electrical infrastructure networks across Australia.

Our range of products make it easy for you to complete your overhead or underground project saving you time and money. We are committed to providing you with the best products, brands and service from many of the world's leading manufacturers.

All Round Supplies has a branch network covering Sydney (Prestons), Nowra and Newcastle (Beresfield), each staffed with industry specialists that understand your needs and are waiting to help.



TABLE OF CONTENTS

LV ABC tools	5
Cutting tools	8
Knives	11
Insulated tools	12
Linesman's tools	15
Hotstick & attachments	18
Tool bags	19
Cable preparation tools	22
Stages of cable preparation	23
Tension & stringing	30
Test & measuring	32
URD tools	36
Pit lid lifters	37
Crimping tools	40
Crimping dies	44
Cable laying tools	46
Mandrels & cleaners	47
Cable rolling guides	48
Earthing tools	52
L2 ASP tools list	58



Image: flickr.com/ausgrid

THE WORLD'S LEADING BRANDS

You don't compromise on the quality of your work, so we don't compromise on the quality of our tools.

We stock only the highest quality, industry-specialised tools from the leading brands and manufacturers in Australia and around the world.

With over 15 years' experience supplying materials to Australia's power distribution industry, we know exactly what you'll need for each specific job.

Get the professional, industry-specialised tools you need, when you need them, and always at competitive prices.





LV ABC TOOLS

A selection of the essential items used in the installation of connectors on low voltage ABC conductors.

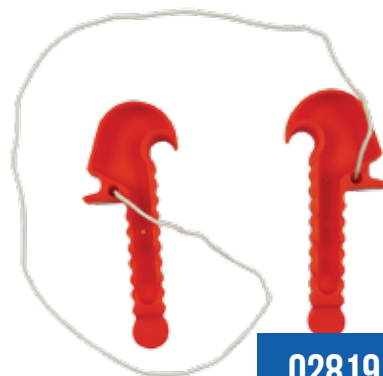
In this category you'll find the tools required when working on overhead LV ABC conductors, including core separating tools for prying apart the individual phase conductors of the cable, linesman's ratchet spanners used to install IPC connectors and split bolts on overhead lines and submersible fuses in underground applications, as well as a range of wire grips.



03302

INSULATED CABLE TEST POINT

Reusable and insulated, the cable test point is suitable for cable ranges up to 150mm².



02819

CORE SEPARATOR LV ABC TO 4C 95

Core separation tool suitable for low voltage ABC up to and including 4-core 95mm². Comes as two tools joined by rope.



03301

CORE SEPARATION WEDGE

Core separation wedge suitable for low voltage ABC cables up to and including 4 x 95mm².



02345

2-WAY RATCHET SPANNER - LONG

Ratchet spanner to install insulated piercing connectors (IPCs, TTDs and NTDs) used by linesmen. Reversible ratchet (6 point double-sided hex) with 13mm across flat on one side & 17mm across flat on the other. Overall length 267mm - long handle.



08417

2-WAY RATCHET SPANNER - SHORT

Ratchet spanner to install insulated piercing connectors. Reversible ratchet with short handle 197mm.



04367

LV ABC GRIP 4X95 – 4X150 ABC

Come-along for conductor range 4x95mm² to 4x150mm² LV ABC cable. Aluminium clamping blocks, painted steel frame, galvanised steel shackle. Weight 6.3kg.



04925

COME-ALONG 2X16 – 4X35 ABC

Come-along for 2 and 4-core LV ABC cable. Cable OD range 8 to 25mm, eye opening 27x40mm. WLL 5.0kN, weight 0.9kg.



05487

SERVICE CABLE TENSIONER

Service cable tensioner, utilised for tensioning of LV ABC service cables. Able to be locked when loaded, it utilises a compound pulley system with a mechanical advantage of 3. Extended length of 2 metres, working load 400kg.



08451

COME-ALONG 4X35 – 4X70 ABC

Come-along for 4-core LV ABC cable. Cable OD Range 16 to 34mm, eye opening 30x45mm. WLL 12.0kN, weight 2.1kg.



08467

COME-ALONG 4X95 – 4X150 ABC

Come-along for 4-core LV ABC cable. Cable OD Range 28 to 45mm, eye opening 30x45mm. WLL 18.0kN, weight 3.1kg.



CUTTING TOOLS

A comprehensive selection of tools and knives for cutting through cables, conduit, insulation and more.

From small and medium hand-held ratchet cutters to heavy-duty hydraulic and battery-operated cutters, we've got the tools to get you through any sized cable or PVC conduit. We also stock a great range of knives - many with insulated handles - to make short work of outer sheaths, insulation, wires, harness ties, gauge wires and electrical tape.



02131

CABLE CUTTER RATCHET 400MM²

Gear driven ratchet cable cutter, forged construction and cuts up to 400mm² single core copper conductors (not suitable for steel). Length 260mm, weight 1.1kg.



04476

CABLE CUTTER RATCHET 300MM²

Hand cable cutter ratchet for annealed copper and aluminium conductors up to 300mm² (maximum 32mm outside diameter).



02227

CABLE CUTTER RATCHET 300MM²

Hand cable cutter ratchet up to 300mm² conductor.



04477

400MM CABLE CUTTER RATCHET

Cable cutter ratchet up to 400mm² conductors.



02878

PARROT-BEAK CABLE CUTTER

Hand operated, parrot-beak style cutter for cable range 6mm² to 70mm² cables. Length 240mm.



03851

240MM PARROT BEAK CABLE CUTTER

Hand operated parrot beak style cutter for up to 240mm² cables.



03852

500MM PARROT BEAK CABLE CUTTER

Hand operated parrot beak style cutter for up to 500mm² cables.



02826

25MM WIRE CUTTER RATCHET

Wire cutter ratchet up to maximum cutting diameter 25mm, for ASCR & steel wire.



06513

HYDRAULIC HAND CUTTER

Hand operated hydraulic steel and wire roper cutter. 90° head rotation, range up to 24mm diameter copper, aluminium, ACSR.



06286

BATTERY CABLE CUTTER

Battery operated cable cutter for non ferrous cables up to 50mm in diameter. Weight 2.5kg. Comes with battery, charger and carry case.



06735

BATTERY FOR CABLE CUTTER

Battery cable cutter - battery only.



04965

48MM CONDUIT CUTTER

Conduit cutter for cutting PVC conduit up to 48mm diameter. Has a unique clutch action which automatically opens the blades once the cut is complete, and a heavy duty ultra hard (HRC 57) stainless steel blade with a unique parabolic profile to increase life.



08752

CONDUIT CUTTER

Ratchet action conduit cutter/shear for cutting PVC conduit up to 63mm diameter. Has 'V' shaped blade to pierce tube for ease of cutting.



05628

175MM CABLE KNIFE, WOOD HANDLE

Cable knife with a fixed blade and wood handle. 175mm overall length.



05557

TECHNICIAN'S KNIFE

Technician's knife with plastic handle, 65mm hawkbill, locking stainless steel blade.



03566

INSULATED SHEATH STRIPPER

Heavy duty cable sheath stripper (1000V VDE) designed to strip large (no limit) diameter cable e.g. ground cable and multi-sheathed. The shoe type blade tip prevents the inner conductors from being damaged when stripping the different insulating layers. A fully insulated handle allows working on live lines up to 1000V.



06838

HACKING KNIFE

Hacking knife with 115mm blade.



08473

159MM SPLICER'S KNIFE

Splicer's knife used for splicing wire, cutting harness ties, medium gauge wires, electrical tape and stripping insulation. Tough forged steel and double-plated chrome over nickel to prevent rust and corrosion. Coping-style blade with protective blade sheath and cushioned handle for ease of use & safety.



02607

HACKING KNIFE, INSULATED HANDLE

Hacking knife with insulated handle.



03182

KEVLAR STRING

Insulation cutting Kevlar string for plastic insulated cables. 2 metres in length, yellow in colour.



02208

230MM BLADES FOR SABRE SAW

230mm metal blades for sabre saw, suits 24V cordless sabre saw and will cut 240mm² Cu XLPE cable. Come in a pack of 5.



INSULATED TOOLS

1000V separators, pliers, cutters, screwdrivers and knives for use by electrician's and electrical contractors when working on live conductors.

Standard tools do not provide electrician's with any protection from electrical shock, and should only be used on un-energized electrical equipment. When carrying out electrical work on exposed energized electrical conductors or circuit parts, insulated tools should always be used. These tools are manufactured to strict standards. A tested and fully approved 1000 volt tool can protect the user against voltages up to 1000 volts.



02810

5MM INSULATED T ALLEN KEY

5mm allen key driver with insulated 'T' shaped handle. Suitable for popular tee joint style ring connectors and terminal blocks.



02616

3C CABLE CORE TWISTER

Cable core twister for 3-core 185mm² to 300mm² bare, insulated.



02615

4C CABLE CORE TWISTER

Cable core twister for 4-core 185mm² to 240mm², insulated.



02866

LINE EXTRACTOR - MALE THREAD

Line extractor - male thread, insulated.



02608

INSULATED MAXIWEDGE

Insulated core separator & wedge, ideal for multicore cables when a standard wedge cannot be employed. Made from moulded nylon with a hook-type end. Length 262mm, weight 87 grams.



02609

INSULATED MINIWEDGE

Insulated core wedge designed to aid the separation of cores during jointing. Has thumb and finger grip assists.



08477

HOLDING TOOL

Holding tool for shearoff/mechanical lugs/connectors. Used to avoid twisting while tightening shearoff lugs and/or connectors.



08822

1000V SCREWDRIVER SET

Insulated (IEC 60900:2004)- SD8SET. Contains Slotted: 2.5x80, 4.0x100, 6.5x150, Tester 140, Phillips 1x100, PH 2x100, Pozidrive 1x100, 2x100.



08819

1000V SHEAR CUT PLIERS

Insulated handles, Hi-Voltage grips, shear-cut action jaws, a crimper jaw for use with 1.5mm – 6mm non-insulated connectors.



08821

1000V SIDE CUTTER

Crescent diagonal/side cutter - 5428HV. Insulated handles, solid joint, cutting edge electronically hardened, made from drop forged alloy steel.



03158

CORING KNIFE

Coring knife with curved blade and insulated handle.



03566

INSULATED SHEATH STRIPPER

Heavy duty cable sheath stripper (1000V VDE) designed to strip large (no limit) diameter cable e.g. ground cable and multi-sheathed. The shoe type blade tip prevents the inner conductors from being damaged when stripping the different insulating layers. A fully insulated handle allows working on live lines up to 1000V.

LINESMAN TOOLS

A huge range of tools and accessories for the electrical linesman.

From ratchet and line tap spanners for installing IPC, HSC and TOC connectors and split bolts, to insulation strippers, core separators, pole steps, AMPACT components, hot stick components, come alongs or 'wire grips', canvas tool buckets and other accessories, this section covers everything required by the electrical linesman.



02346

INSULATION STRIPPER HV ABC/CCT

Cable stripping tool for HV ABC/CCT cable oversheaths and cable insulation from 1.5 to 5.5mm. Cable range from 12 – 32mm. Long life blade and chrome steel components. NB - Not designed to strip mid-span conductor.



03142

4-WAY LINE TAP SPANNER

4-way line tap spanner to suit B22, B24, B25 and B26 split bolts/line taps.



02345

2-WAY RATCHET SPANNER - LONG

Reversible ratchet (6 point double-sided hex) with 13mm across flat on one side & 17mm across flat on the other. Overall length 267mm.



03733

LINESMAN'S 4-WAY RATCHET SPANNER

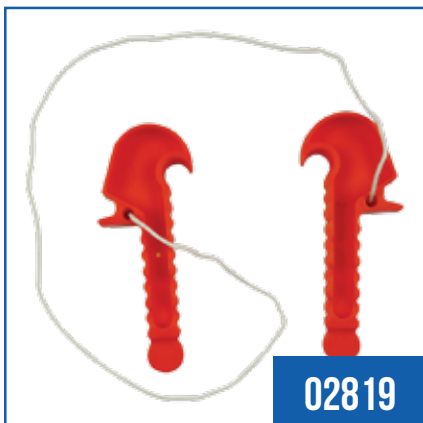
Reversible ratchet (6 point hex) with 17mm, 19mm, 24mm & 30mm across flat sides, for M10, M12, M16 & M20 bolts.



08417

2-WAY RATCHET SPANNER - SHORT

Reversible ratchet (6 point hex) with 13mm across flat on one side & 17mm across flat on the other. Overall Length 197mm



02819

CORE SEPARATOR LV ABC TO 4C 95

Core separation tool suitable for low voltage ABC up to and including 4-core 95mm². Comes as two tools joined by rope.



03301

CORE SEPARATION WEDGE

Core separation wedge suitable for low voltage ABC cables up to and including 4 x 95mm².



04307

150KG WOOD POLE PLATFORM

Pole platform for wood poles, 870mm long x 440mm wide. 150kg Working Load Limit.



05674

AMPACT POWER UNIT

Includes universal power unit and small head for installing AMPACT red, white and blue coded wedge clamps. Also includes cleaning tool and take-off clips (excludes carry case refer 05678).



05720

LARGE AMPACT HEAD

Large head for installing Ampact yellow coded wedge clamps. Universal power unit not included.



05678

CARRY CASE FOR AMPACT TOOL

Plastic carry case for Ampact tool.



05370

CARTRIDGE - TYPE 81 RED

Wedge clamp cartridge, Red Type 81 for AMPACT tool.



05020

CARTRIDGE - TYPE 82 BLUE

Wedge clamp cartridge, Blue Type 82 for AMPACT tool.



05156

CARTRIDGE - TYPE 83 WHITE

Wedge clamp cartridge, White Type 83 for AMPACT tool



05012

CARTRIDGE – TYPE 84 YELLOW

Wedge clamp cartridge, Yellow Type 84 for AMPACT tool.



07876

J HOOK DRIVER

For installing J-hooks into timber poles. Comes with the ½ inch square drive, spring loaded ball so hook snaps into place.



07142

12M TELESCOPIC HOTSTICK

Triangular operating and measuring telescopic stick. 12m extended length, 1.8m retracted length. Supplied with storage bag.



05006

SERVICE FUSE PULLER HOTSTICK UNI

House service fuse puller - pigtail type. 'Sunrise' universal attachment for hotstick.



06375

HOTSTICK SERVICE FUSE PULLER

House service fuse puller - pigtail type. Hex attachment for hotstick.



05460

ABS OPERATING KEY HOTSTICK

ABS operating key. 'Sunrise' attachment for hotstick.



06373

HOTSTICK LINK ADAPTOR

Link adapter with hex attachment for hotstick.



07936

DISCONNECT HOOK UNI HOTSTICK

Disconnect hook, 'sunrise' universal attachment for hotstick.



07935

S HOOK UNIVERSAL HOTSTICK

S hook, 'sunrise' universal attachment for hotstick.



06374

HOTSTICK LINE CLAMP REMOVER

Live line clamp remover with hex attachment for hotstick.



08093

PESF FLAG REMOVAL

PESF flag removal. 'Sunrise' universal attachment for hotstick.



08615

LINESMAN'S OVAL TOOL BUCKET

Made from green canvas, the linesman's oval tool bucket has 15 internal pockets and comes with rope and a snap hook. 350mm x 150mm x 250mm.



08620

LINESMAN'S ROUND TOOL BUCKET

Linesman's round tool bucket with 2 external pockets, comes with rope and snap hook. 380mm x 290mm.



04255

LINESMAN'S CANVAS TOOL BUCKET

Linesman's blue canvas tool bucket.



08718

TOOL POUCH

Leather tool pouch, 9 pockets with webbing belt.



07342

SPARKIES POUCH

Sparkies pouch for Flip'n'Grip utility belt.



07343

NAIL GUN HOLSTER

Nail gun holster for Flip'n'Grip utility belt.



07347

GLASSES POUCH/GLOVE CLIP

Glasses pouch or glove clip for Flip'n'Grip utility belt.



07348

DRINK BOTTLE POUCH

Drink bottle pouch for Flip'n'Grip utility belt.



07349

HOLDALL BAG

Flip'n'Grip holdall carry bag.



04925

COME-ALONG 2X16 – 4X35 ABC

Come-along for 2-core and 4-core LV ABC cable. Cable OD range 8 to 25mm. Eye Opening 27x40mm WLL 5.0kN, weight 0.9kg.



08451

COME-ALONG 4X35 – 4X70 ABC

Come-along for 4-core LV ABC cable. Cable OD Range 16 to 34mm. Eye Opening 30x45mm. WLL 12.0kN, weight 2.1kg.



08467

COME-ALONG 4X95 – 4X150 ABC

Come-along for 4-core LV ABC cable. Cable OD Range 28 to 45mm. Eye Opening 30x45mm. WLL 18.0kN, weight 3.1kg.



04367

COME-ALONG 4X95 – 4X150 ABC

Come-along for conductor range 4x95mm² to 4x150mm² LV ABC cable. Aluminium clamping blocks. Weight 6.3kg



05487

SERVICE CABLE TENSIONER

The service cable tensioner is utilised for the tensioning of LV ABC cables. It utilises a compound pulley system with a mechanical advantage of 3 and is able to be locked when loaded. Extended length of 2 metres. Working load = 400kg.



02641

POLE DRESSING STAND TYPE 3

Pole dressing stand Type 3. 860mm tall, Safe Working Load (SWL) 2500kg. Powder coated and manufactured to Australian Standards. Test Certificate C10920.01.



02762

POLE HOLE COVER

Hexagonal (brake pressed) pole hole cover. 1000mm x 1000mm with a 50mm diameter hole in centre. Galvanised sheet metal 3mm thick.



02642

POLE DRESSING STAND TYPE 4

Pole dressing stand Type 4, 600mm tall, safe working load 2500kg. Manufactured to Australian Standards. Test Certificate C10920.02.



CABLE PREP TOOLS

A full product line of tools for each specific process involved in correctly preparing power cables, including stripping, scoring, cutting and cleaning.

With a focus on performance, reliability and ease of use, our range of cable preparation tools covers each aspect of splicing and terminating a cable, from the accurate stripping of outer sheaths, the scoring and cutting of semi-con and the removal of insulation and other materials to produce a consistent, uniform preparation of cable ends.

STAGES OF CABLE PREPARATION:

SHEATH



TOOLS REQUIRED



SEMICON



TOOLS REQUIRED



INSULATION



TOOLS REQUIRED





02094

HDPE/PVC SHEATH STRIPPER

Hand held sheath stripper for HDPE/PVC – cuts any shape and any direction, no limit to diameter or length. All metal multi-grip handle can be gripped outside or inside, right or left hand, blade has blunt mushroom head which stops damage to inner core.



08479

ADJUSTABLE JACKET SLITTER

Adjustable Jacket Slitter (AJS) for slitting cable coverings ranging from soft insulated jackets to high density HDPE up to 6.3mm thick.



08485

ADJUSTABLE CABLE END STRIPPER

Adjustable cable end stripper with spring-loaded trigger-action jaws, removes outer jacket or insulating material. Cable OD 12.7mm - 63.5mm.



02075

PLASTIC INSULATION STRIPPER

Plastic insulation stripper (PVC or HD Polythene sheathed CU or AL cables) with outside diameter 14 to 40mm, 11 & 22kV XLPE.



03548

OUTER SHEATH STRIPPER RATCHET

Tool for stripping the outer sheath from all MV and LV cables. Designed to strip up to 5mm (adjustable) outer sheaths with minimum 25mm outside diameters (longitudinal and circular cuts). Strips without damaging conductor or screen. Designed to strip both ends and in the middle.



02346

INSULATION STRIPPER HV ABC/CCT

Cable stripping tool for HV ABC/CCT cable oversheaths and cable insulation from 1.5 to 5.5mm. Cable range from 12 – 32mm.



02879

PAPER INSULATION REMOVAL TOOL

Insulation removal tool for the removal of paper insulation. Application diameter range 13-55mm, length 190mm.



08483

INSULATION CHAMFERING

Chamfering tool for removing sharp edges at cut-off edges of XLPE cable insulation, prevents damage to slip-on accessories and aids installation.



07315

INSULATION CHAMFER CUTTER

Insulation chamfer cutter for medium voltage cables with an insulation diameter of 15-60mm.



08475

SEMI-CON REMOVAL PLIERS

Long flat-nose pliers designed for the removal of semi-con. The pliers are made from drop forged, hardened & tempered steel alloy, and are paired with soft ribbed grips for maximum comfort & durability. Length 152mm.



03114

0.4MM XLPE SCREEN SCORER

Screen scoring tool for 0.4mm XLPE.



02074

0.6MM XLPE SCREEN SCORER

Screen scoring tool for 0.6mm XLPE



08482

8 – 45MM SEMI-CON SCORER

Semi-con scoring tool (SCS) capable of longitudinal, spiral & calibrated square cuts. Blade adjustment from 0-4mm depth. Cable range 8mm-45mm.



04361

SEMI-CON SCORER

AV6410 semi-con scorer.



03347

ADJUSTABLE SEMI-CON SCORER

'Banana peeler' designed for length & circumference scoring. Scoring depth 0.025 to 2.286mm, suitable for 19.05 to 31.75mm diameter.



02084

25 – 500MM SEMI-CON SCORER

Semicon scorer 25mm2 to 500mm2 (adjustable blade depth).



03109

HOLDING TOOL

Holding tool for shearoff/mechanical lugs/connectors. Used to avoid twisting while tightening shearoff lugs and/or connectors.



08477

HOLDING TOOL

Holding tool for shearoff/mechanical lugs/connectors. Used to avoid twisting while tightening shearoff lugs and/or connectors.



03148

GAS TORCH ASSEMBLY

Gas torch assembly, includes 38mm burner head, handle and 5m hose.



06123

GAS TORCH HANDLE PIEZO IGN

Torch handle with Piezo automatic ignition. Gas flow with pressed trigger only.



06122

GAS TORCH NOZZLE 50MM

Gas torch nozzle, 50mm dia, suits gas torch handle with piezo automatic ignition.



06121

GAS TORCH HOSE 4M HIGH PRESSURE

Fitted with screw connections for all FH-1630 regulators and handles.



06960

REGULATOR 2 BAR PRESSURE

Constant pressure regulator for all FH-1630 hoses. For propane gas tanks with a capacity of 5kg to 11kg. Gas flow: max 6kg/h.



03566

INSULATED SHEATH STRIPPER

Heavy duty cable sheath stripper (1000V VDE) designed to strip large (no limit) diameter cable e.g. ground cable and multi-sheathed.



08473

159MM SPLICER'S KNIFE

Splicer's knife used for splicing wire, cutting harness ties, medium gauge wires, electrical tape and stripping insulation.



05628

175MM CABLE KNIFE

Cable knife with a fixed blade and wood handle. 175mm overall length.



03158

CORING KNIFE, INSULATED HANDLE

Coring knife with curved blade and insulated handle.



06838

HACKING KNIFE

Hacking knife with 115mm blade.



02607

HACKING KNIFE, INSULATED HANDLE

Hacking knife with insulated handle.



07598

KAM SWIVEL BLADE STRIPPER

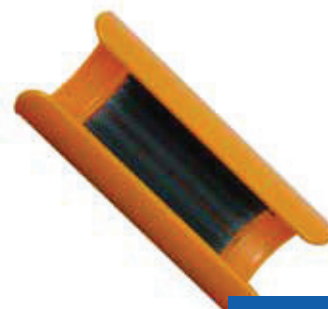
Swivel blade stripping tool, cable range 4–28mm, with knife.



02609

INSULATED MINIWEDGE

Insulated core wedge designed to aid the separation of cores during jointing. Made from moulded nylon to resist detrimental wear at the tip during normal use. Has thumb and finger grip assists. Length 160mm, weight 52 grams.



02975

COPPER SCRATCH BRUSH

Orange scratch brush for copper conductors.



02608

INSULATED MAXIWEDGE

Insulated core separator & wedge, ideal for multicore cables when a standard wedge cannot be employed. Made from moulded nylon with a hook-type end. Length 262mm, weight 87 grams.



02974

ALUMINIUM SCRATCH BRUSH

Blue scratch brush for aluminium conductors.



03182

INSULATION CUTTING KEVLAR STRING

Insulation cutting Kevlar string for plastic insulated cables. 2 metres in length, yellow in colour.



02691

CABLE TWISTER 4 CORE SECTOR

Tool, cable twister to suit 4 core sector cable. Used when undertaking link pillar terminations. Supplied as 1 pair.



02615

INSULATED CABLE CORE TWISTER

4 core 185mm² insulated to 240mm² insulated. Insulated tool.



02616

3C CABLE CORE TWISTER

Cable Core Twister, 3 Core 185mm² to 300mm² Bare. Insulated tool.



02634

BLADE FOR KAM TYPE STRIPPER

Replacement blade for sheath stripper HDPE/PVC.



03098

BLADE FOR INSULATION STRIPPER

Replacement blade for ABC/CCT sheath stripping tool (02346).



03727

BLADE FOR XLPE STRIPPER

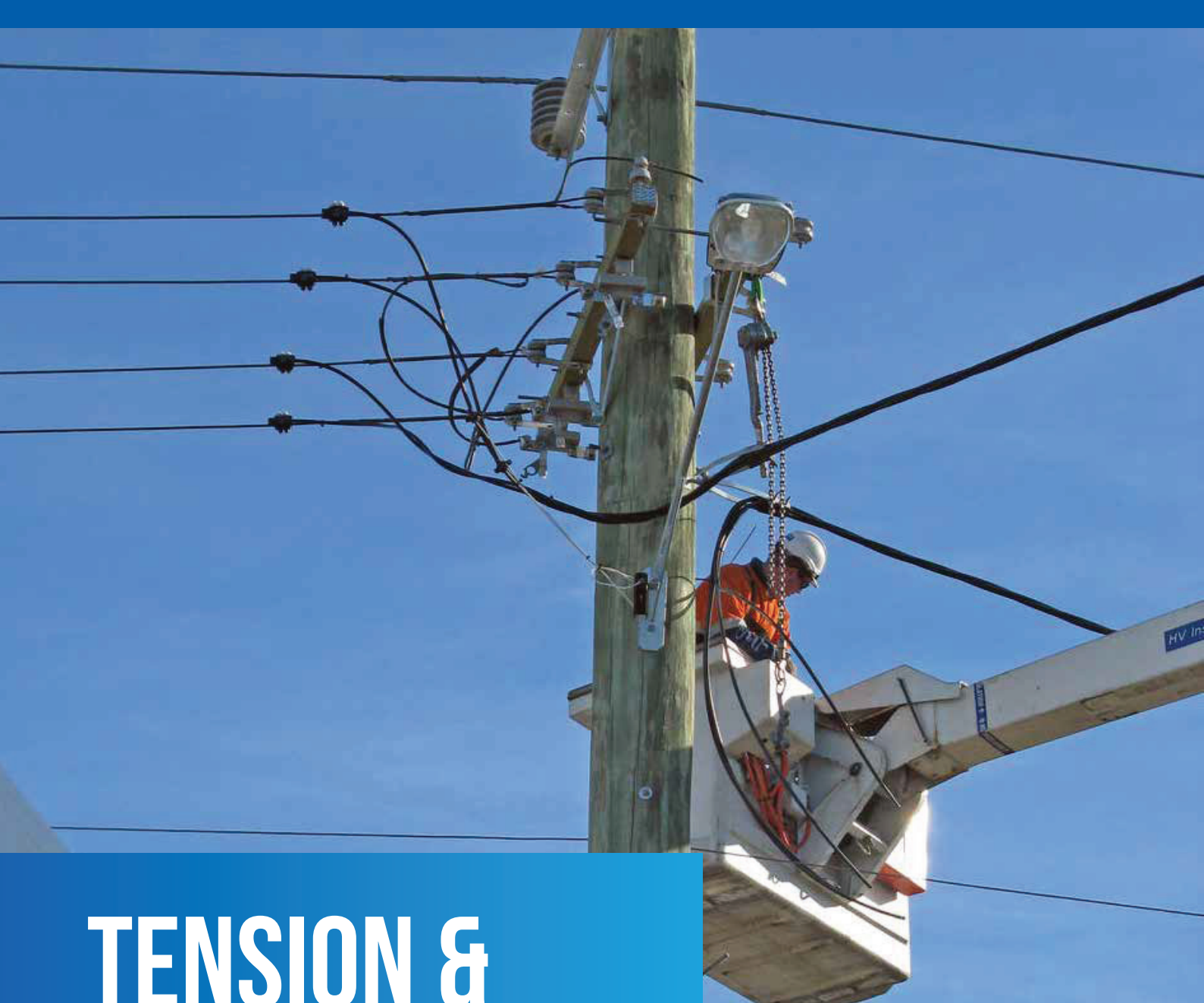
Replacement blade for XLPE insulation stripping tool (02075).



07632

BLADE FOR KAM TYPE STRIPPER

Spare blade for KAM type stripping tool.



TENSION & STRINGING

Grips and rollers required when using the tension method to install overhead conductors.

The tension method involves the conductor being pulled into position under tension. This is achieved by running a synthetic pulling line between a winch and a bullwheel tensioner threaded with the conductor. The pulling line is attached to the conductor using a wire grip (also referred to as a come-along, suitcase or four-bolt) and pulled through stringing rollers (or running sheaves) until the end reaches the winch, maintaining enough tension to keep the conductor clear of the ground and other obstructions.



05487

SERVICE CABLE TENSIONER

Able to be locked when loaded, it utilises a compound pulley system with a mechanical advantage of 3. Extended length 2m, working load 400kg.



04367

COME-ALONG 4X95 – 4X150 ABC

Come-along for conductor range 4x95mm² to 4x150mm² LV ABC cable. Weight 6.3kg.



04925

COME-ALONG 2X16 – 4X35 ABC

Come-along for 2 and 4-core LV ABC cable. Cable OD range 8 to 25mm, eye opening 27x40mm. WLL 5.0kN, weight 0.9kg.



08451

COME-ALONG 4X35 – 4X70 ABC

Come-along for 4-core LV ABC cable. Cable OD Range 16 to 34mm, eye opening 30x45mm. WLL 12.0kN, weight 2.1kg.



08467

COME-ALONG 4X95 – 4X150 ABC

Come-along for 4-core LV ABC cable. Cable OD Range 28 to 45mm, eye opening 30x45mm. WLL 18.0kN, weight 3.1kg.



04391

COME-ALONG 5 – 25 AL/CU

Come along for 5 – 25mm diameter bare aluminium or copper cable. SWL 2.0T (20kN), weight 1.8kg.



02537

LV ABC RUNNING SHEAVE

Roller opens to allow easy transfer to suspension clamp(s). Includes socket tongues. Accommodates up to 4c 150mm² LV ABC.



HV ABC RUNNING SHEAVE

HV ABC running sheave (excludes yoke assembly and support hooks). Attaches to pole bracket & suits angle poles to 45 degree and accommodates up to including 22kV 3 core 185mm² ABC cable. Consists of two rollers.



Image: flickr.com/ausgrid

TEST & MEASURING

We stock a large selection of electrical testing equipment, including test lamps, voltage testers, detectors, multimeters, neutral supply and load testers, phase rotation testers and more.

Electronic test and measurement equipment is used to create signals and capture responses from electronic devices and systems. The use of electrical test and measurement equipment is essential for verifying the functionality of the electrical system, or for proving faults which can be traced and identified.



02858

240/415V TEST LAMP

240/415V AC and DC, Cat IV 300V, certified and tested to AS 61010:2003, fused: 2A (50kA @ 500V AC and 20kA @ 500V DC). 25W bulb, specially designed locking fitting to prevent accidental disconnection during use. 3 metre lead with detachable peg clip/chisel probe and 6.5 x 1.5 mm rounded flat probe.



04891

415V TEST LAMP

Test lamp, 415V, TL1. Probe 1 = fixed, probe 2 = probe. 2m straight fuse cord, 15W lamp.



07590

TEST LAMP PROBE

Test lamp probe with peg clip and 250mm lead.



07814

TEST SPOOL

Test spool, comes with 10m cable and shrouded banana plug.



07591

TEST LAMP PEG PROBE

Peg probe for test lamp.



04606

TEST LAMP TESTER

Test lamp tester, 25W for TL2 and TL3 test lamps. Comes with audible and visual indication as well as belt clip.



04744

25W 240V SES CLEAR PILOT LAMP

25watt 240V SES clear pilot lamp.



08757

NEUTRAL SUPPLY TESTER

Dewar Electronics M1121 NST neutral and supply tester kit, ensures the incoming Active and Neutral power connections to a customer's premises are correctly identified and safe to use before a power connection is made. An audible alarm indicates a pass at the end of the measurement cycle or a measurement failure.



08783

SINGLE PHASE LOAD TESTER

The Desmo LT240A15 CAT IV 600V single phase load tester, used as an electrical load on kWh power meters when testing to ensure the correct operation and functionality of the meters. Incorporates fused probes with silicon leads and is housed in a compact body. It is protected by an automatic thermal cut-out switch.



03058

HIGH VOLTAGE PROXIMITY TESTER

Permanent self test facility, 11 voltage. Positions 240V/11/22/33/66/110/132/210/275kV. Supplied in case, also known as a modiewark.



06054

CARRY CASE FOR VOLTAGE TESTER

Soft carrying case for Fluke T100 series testers. Zippered carrying case with durable vinyl exterior, has belt loop and an inner pocket.



06053

VOLTAGE TESTER

Fluke T140 2-pole tester for voltage testing, resistance, optical and acoustic continuity tests, phase detection. Protected to EN61010-1 Cat IV 600V.



02577

METER PHASE ROTATION TESTER

Input Voltage 200 to 600V AC, frequency range 50 to 60Hz, with colour coded alligator clips and HRC fuses. Safety and compliance EN61010 Cat III 600V. Designed for line workers with fused leads to provide overload protection. The leads are double insulated. The unit is supplied with a soft vinyl case.



02576

MULTIMETER DIGITAL TRUE RMS

Multimeter digital true RMS on AC Volts & current. Auto ranging, input protection 600V.



02856

DIGITAL CLAMP METER

1000A AC/DC true RMS. Comes with case and test leads, operating manual and battery (1 x 9V 6F22). Size 282 x 104 x 47mm.



03850

METER PHASE ROTATION TESTER

Input voltage 100 to 600V AC, frequency range 45 to 70Hz. Safety and Compliance EN61010 Cat III 500V. No moving mechanical parts. This unit gives phase and sequence indication. It will identify 3 phases, their sequence and no phase. Used to test supply when installing motors, pumps, conveyor lines, drives, etc.



03773

METER ROTATION METER

Meter rotation meter.



04646

CABLE CORE IDENTIFIER

Used to identify the cores and their sequence in a 3-phase power cable.



03972

CIRCUIT BOARD RESISTOR

Printed circuit board with resistors for testing meters. Resistors 0.5, 1, 10, 20, 100, 500, 1k, 1k5, 1M, 10M, 50M, 100M Ohm.



URD TOOLS

A range of tools used in underground residential development work.

Our range of URD tools includes allen keys, spanners and cable twisters for mains pillar terminations, a wide range of pit lid lifters, cable tie tensioners, fuse pullers and duct seal inflation tools for URD connections.



02333

D-BOLT SPANNER

T-bar 'D' bolt spanner, 90cm long.



02810

5MM INSULATED 'T' ALLEN KEY

Insulated T-shaped handle, 5mm allen key driver. Suitable for popular tee joint style ring connectors and terminal blocks.



03848

ALLEN KEY/BUTTON BOLT SPANNER

Allen key/button bolt spanner, 850mm long. Used to undo allen key/button bolts in pillars.



03279

PIT LID LIFTER

Lid lifter single T-Bar type. Metal, painted yellow.



06488

INSULATED PIT LID LIFTER

Lid lifter T-bar type, insulated.



07422

PIT LID LIFTER - LONG HANDLE

Pit lid lifter with long handle.



05953

TELSTRA PIT LID LIFTER

Pit lid lifter for Telstra and other class A pits.



03904

OPEN POINT LINK TOOL KIT

Consists of tool box, Norbar torque wrench, vice grip cable twisters (1 pair), Nylon hammer, 5mm 1000 Knipex insulated tee wrench, Hex T wrench 10mm, Hex T wrench 5mm, Hex socket 1/2" square drive 10mm and Hex key with short drive 10mm.



07810

STREET LIGHT COLUMN KEY

Streetlight column key for Endeavour Energy.



06409

CABLE TIE TENSIONER

Tensioner for stainless steel cable ties.



02771

6 – 19MM BAND-IT TOOL

Band-it tool for 6 – 19mm stainless steel strap/band.



02315

HEAVY DUTY STRAP/BAND BUCKLE

Used to fix buckles and stainless steel straps to onto concrete and metal poles



02691

4C CABLE TWISTER

Cable twister to suit 4C sector cable
Used when undertaking link pillar terminations. Supplied as one pair.



02615

4C CABLE CORE TWISTER

Cable core twister for 4-core 185mm² insulated to 240mm² insulated.



02616

3C CABLE CORE TWISTER

Cable core twister, 3-core 185mm² to 300mm² bare. Insulated tool.



04618

CORDLESS IMPACT WRENCH

Cordless Impact Wrench, 12V. Includes 1 x battery charger, 2 x batteries, carry case, instructions, 1/4" hex drive adaptor, 1/2" hex sockets 10mm, 13mm, 17mm, 19mm, 22mm and 27mm. Suitable for shear head bolts up to 100Nm.



04562

HEX SOCKET

10mm hex impact socket, 1/2 drive.



06785

3M CABLE LOCATOR

Cable locator, 3m 2273m.



02161

FUSE PULLER

Low voltage DIN 00 to DIN4 fuses.



05941

DUCT SEAL INFLATION TOOL

Duct seal inflation tool for RDSS inflatable duct seals. Requires C02 cartridges (not included).



05942

C02 CARTRIDGE

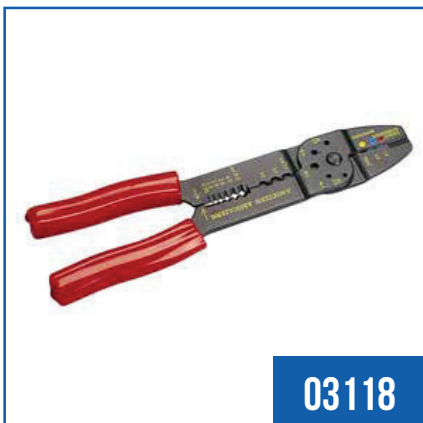
C02 cartridge for RDSS inflation tool.



CRIMPING TOOLS

A comprehensive selection of crimpers and die sets for crimping lugs and links to bare conductor.

From hand held crimpers for bootlace pins and the smallest of lugs, to hydraulic and battery-operated 12-tonne crimpers capable of handling lugs up to 300mm², we've got the right tool for your crimping job. We also stock a selection of individual crimping dies, as well as full sets of both copper and aluminium crimping dies.



03118

COMBINATION CRIMPER

For pre-insulated red, blue and yellow terminals. 1.5 to 6mm. Includes cutter, bolt cutter and wire stripper.



05514

OPEN BARREL CRIMPER

Hand crimper, non-ratchet pliers for open barrel. Roll in crimp type terminals. Range 0.75mm² – 2.1mm².



06926

PRE-INSULATED TERMINAL KIT

Utilux TK-22/1 terminal kit, includes a range of preinsulated terminals and a #102 crimping tool. Supplied in a metal case.



04407

HAND RATCHET CRIMPER

Copper lug hand crimper, ratchet type for 1.5mm² – 16mm² copper lugs and uninsulated terminals.



06789

BOOTLACE PIN CRIMPER

Ratchet hand crimper for 16 – 35mm² bootlace pins.



06284

12T HYDRAULIC HAND CRIMPER

Hand operated, 180° head rotation, ram stroke 32mm. 640mm long, 7kg. Range up to 300mm². Supplied in heavy duty plastic carry case.



02575

HEXAGONAL CRIMPER

Hexagonal crimper for copper lugs 6-120mm². Dies are self contained & rotating. Has over centre action to ensure complete crimp.



03945

TR GROOVE CRIMPER

TR series groove crimper. Crimp groove sizes 9.52mm and 12.70mm.



07069

U-HEAD BATTERY CAB CRIMPER

12T, jaw opening 42mm. 7.2kg (with battery). Range up to 300mm². Supplied in carry case with 18V 3.0Ah Li-ion battery, charger and shoulder strap.



05602

12T HYDRAULIC CRIMPER

Output: 11.3 tonnes. Hydraulic – two stage pumping action, automatic pressure bypass, 180° swivel head, fibreglass handles. Range up to 300mm². Length 585mm, 6.0kg (tool with die loaded). Comes with carry case and dies: 38-63CU, 38-77CU, 38-92CU, 38-104CU, 38-115CU, 38-142CU, 38-165CU, 38-183CU, 38-200CU, 38-231CU.



03703

TR GROOVE CRIMPER

TR series groove crimper. Crimp groove size 15.88mm.



06285

12T C HEAD BATTERY CRIMPER

12T battery operated hydraulic crimper, 'C' head. 180 degree head rotation, non slip handle design, jaw opening 32mm. Weight 8.5kg (with battery). Range up to 300mm². Supplied in heavy duty plastic carry case with 2 x batteries and charger.



03702

TY GROOVE CRIMPER

TY series groove crimper. Crimp groove sizes 6.35mm and 7.94mm.



07409

12T C HEAD BATTERY CRIMPER

Jaw opening 42mm. 7.2kg (with battery). Range up to 300mm². Supplied in case with 2 x 18V 3.0Ah Li-ion batteries, charger and shoulder strap.



03128

6T DIELESS BATTERY CRIMPER

Dieless battery operated crimper. Multiple-indent type often used for overhead work, also known as 'versa crimp'. 180 degree swivel head, 6 tonne output. No dies required. Includes battery, charger and carry case.



02574

U-HEAD HYDRAULIC CRIMPER

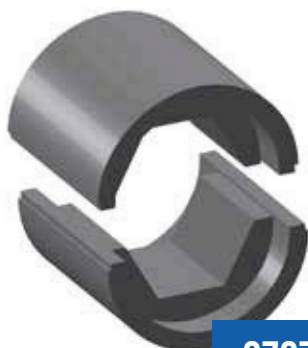
13 Tonne, remote U-head hydraulic crimper. Takes dies up to 300sqmm. NB: Excludes pump and dies.



02573

240V HYDRAULIC PUMP

240V hydraulic pump. 1.6A (300 Watt) electric single phase. Comes with hose length 3 metre. Weight 10.3kg. NB: Excludes remote head.



07071

6-300 AL HEX CRIMPING DIE SET

Aluminium hex crimping die set for 12T crimper. Includes aluminium dies for 6-300mm².



07070

16-300 CU HEX CRIMPING DIE SET

Copper hex crimping die set for 12T crimper. Includes copper dies for 16-300mm².

ABC DIES	
25MM ABC HEX CRIMPING DIE Hex crimping die for 12T crimper 25mm ² ABC (14.0 A/F)	06859
35-95MM ABC HEX CRIMPING DIE Hex crimping die for 12T crimper 35-95mm ² ABC (17.3 A/F)	06860
95-150MM ABC HEX CRIMPING DIE Hex crimping die for 12T crimper 95-150mm ² ABC (21.5 A/F)	06861

ALUMINIUM DIES	
240MM 4C AL CRIMPING NEST DIE Hex crimping die for 12T crimper. Indent for 4 core AL sector cables (requires indent die).	06862
240MM 4C AL CRIMPING INDENT DIE Hex crimping die for 12T crimper. Indent for 4 core AL sector cables (requires nest die).	06863
6/35MM AL HEX CRIMPING DIE Hex crimping die for 12T crimper 6-35mm ² aluminium (9.0 A/F)	06854
50/70MM AL HEX CRIMPING DIE Hex crimping die for 12T crimper 50-70mm ² aluminium (13.2 A/F)	06855
95/120MM AL HEX CRIMPING DIE Hex crimping die for 12T crimper 95-120mm ² aluminium (17.3 A/F)	06856
150/185MM AL HEX CRIMPING DIE Hex crimping die for 12T crimper 150-185mm ² aluminium (22.0 A/F)	06857
240/300MM AL HEX CRIMPING DIE Hex crimping die for 12T crimper 240-300mm ² aluminium (28.4 A/F)	06858

COPPER DIES	
16MM CU HEX CRIMPING DIE Hex crimping die for 12T crimper 16mm ² copper (6.3 A/F)	06843
25MM CU HEX CRIMPING DIE Hex crimping die for 12T crimper 25mm ² copper (7.7 A/F)	06844
35MM CU HEX CRIMPING DIE Hex crimping die for 12T crimper 35mm ² copper (9.2 A/F)	06845
50MM CU HEX CRIMPING DIE Hex crimping die for 12T crimper 50mm ² copper (10.4 A/F)	06846
70MM CU HEX CRIMPING DIE Hex crimping die for 12T crimper 70mm ² copper (11.5 A/F)	06847
95MM CU HEX CRIMPING DIE Hex crimping die for 12T crimper 95mm ² copper (14.2 A/F)	06848
120MM CU HEX CRIMPING DIE Hex crimping die for 12T crimper 120mm ² copper (16.5 A/F)	06849
150MM CU HEX CRIMPING DIE Hex crimping die for 12T crimper 150mm ² copper (18.3 A/F)	06850
185MM CU HEX CRIMPING DIE Hex crimping die for 12T crimper 185mm ² copper (20.0 A/F)	06851
240MM CU HEX CRIMPING DIE Hex crimping die for 12T crimper 240mm ² copper (23.1 A/F)	06852
300MM CU HEX CRIMPING DIE Hex crimping die for 12T crimper 300mm ² copper (26.0 A/F)	06853



CABLE HANDLING TOOLS

Cable handling equipment for securely gripping and hauling underground cables.

We stock a great range of cable handling tools and equipment to make cable hauling as effortless as possible, including proving mandrels and rubber cleaners for clearing dirt and debris and testing conduit integrity before hauling, high-strength fibreglass rodders for easy insertion of draw lines in ducts and channels, trench rollers and cable guides for guiding and protecting cables while laying and a wide range of other accessories such as stocking grips, rope blowers and line carriers.



07684

40MM PROVING MANDREL

Proving mandrel for 40mm conduit.



06741

50MM PROVING MANDREL

Proving mandrel for 50mm conduit.



06742

80MM PROVING MANDREL

Proving mandrel for 80mm conduit.



06061

100MM PROVING MANDREL

Proving mandrel for 100mm conduit.



04609

125MM PROVING MANDREL

Proving mandrel for 125mm conduit.



06114

138MM PROVING MANDREL

Proving mandrel, 138mm diameter.
Used for proving duct integrity.



06743

150MM PROVING MANDREL

Proving mandrel for 150mm conduit.



07685

200MM PROVING MANDREL

Proving mandrel for 200mm conduit.



06629

100MM RUBBER CLEANER

Rubber cleaner for 100mm conduit.



05443

125MM RUBBER CLEANER

Rubber cleaner for 125mm conduit.



06115

148MM SHORT RUBBER SLUG

Short rubber slug, 148mm diameter. Used for proving duct integrity, cleaning sand and mud, spreading lubricant.



07611

150MM RUBBER CLEANER

Rubber cleaner for 150mm conduit.



04867

RAISED TRENCH ROLLER GUIDE

Trench roller guide - raised type.



04868

FLAT TRENCHED ROLLER GUIDE

Trench roller guide - flat type.



08108

LOCKABLE FEEDING SHEAVE

Lockable feeding sheave for 150mm conduit.



08109

LOCKABLE MULTIPLE ROLLER GUIDE

Lockable multiple roller guide - 150mm.



06191

TRENCH CORNER ROLLER

Trench corner roller.



05619

PIVOTING CABLE GUIDE

Pivoting manhole cable guide with 3 x 100mm aluminium rollers.



07957

9MM RODDER TOOL

Rodder tool, includes dispenser and 250m reel of 9mm diameter fibreglass rod with tracer.



07688

3M POLYCARBONATE HAND ROD

3m polycarbonate hand rod. Thread size = 18.669 x 3.549mm pitch at 60 degrees, right hand thread.



05550

11MM RODDER TOOL

Rodder tool, includes dispenser and 200m reel of 11mm diameter fibreglass rod with tracer.



08111

55–75MM CABLE STOCKING GRIP

Cable stocking/grip for 55–75mm diameter cable, single eye.



02715

CABLE STOCKING/GRIP

Cable stocking/grip for cable. Single eye/double. Galvanised or stainless steel.



07501

KEVLAR CABLE STOCKING

Kevlar cable pulling stocking. Suits 40–55mm diameter cable. 12kN.



07493

REUSABLE PULLING EYE

Reusable pulling eye for single core cable 15–20mm diameter.



08105

LINE SWIVEL

Line swivel, 1.5 diameter, 900lb/40kN.



04225

BELL MOUTH

Bell mouth, aluminium, split.



08101

CONDUIT ROPE BLOWER

Conduit rope blower for 50–150mm diameter conduit.



06117

125MM PLASTIC LINE CARRIER

125mm plastic line carrier.



06118

150MM PLASTIC LINE CARRIER

150mm plastic line carrier.



08102

150MM BALLOON LINE CARRIER

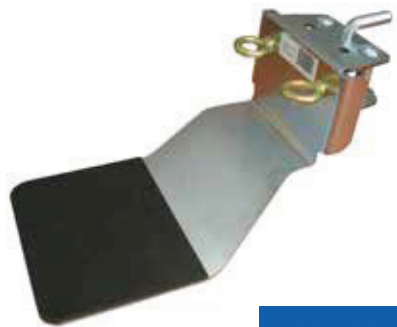
Balloon line carrier for 150mm conduit.



08110

1000KG PORTABLE CAPSTAN WINCH

Portable capstan winch, 1000kg, petrol.



08106

WINCH SUPPORT PLATE

Winch support plate with bent pin.



08107

SQUARE TUBING

Square tubing, 50mm with bent pin.



05643

DRUM ROLLER RAMP

Drum roller ramp, drum diameter 1.5m. SWL 1 tonne. Weight 10.8kg.



EARTHING TOOLS

The Erico Cadweld exothermic welding system and components for reinforcing ground connection joints.

Exothermic welding is used to permanently weld a copper cable to a ground rod. A mould is used to secure the joint, and thermite powder is poured into the mould. Once lit, the powder turns to molten copper, which flows around the joint, creating a perfect electrical connection. If exothermic welding weren't used to reinforce ground connection joints, corrosion and the effects of high currents at mechanically-weak connection points could threaten the effectiveness of the ground path over time, which could result in a serious safety hazard.



02845

CADWELD PLUS CONTROL UNIT

The Cadweld Plus control unit initiates the reaction of the metal crucible. Includes 1.8 metre high temperature control unit lead. Lead connects to ignition strip with purpose designed clip. Battery operated.



05787

CADWELD PLUS REPLACEMENT LEAD

Replacement lead for Cadweld Plus control unit.



02791

SMALL MOULD HANDLE CLAMP

Cadweld mould handle clamp, used to hold C, E and R price cadweld graphite moulds. Does not include moulds.



06944

LARGE MOULD HANDLE CLAMP

Cadweld mould handle clamp, used to hold D, F and J price Cadweld graphite moulds. NB: Excludes moulds.



05306

CHAIN HANDLE CLAMP

Cadweld mould chain support handle clamp, used to hold type C & R cadweld graphite moulds. Supplied with 500mm length of chain to fit up to 100mm dia vertical pipes. Suitable for connection types VS, VF, VB & VV. NB: Excludes moulds.



04944

SOFT BRUSH CADWELD MOULD

Soft cleaning brush for Cadweld moulds.



05461

DUXSEAL CADWELD MOULD

Duxseal for Cadweld moulds.



08490

CADWELD MOULD SSCY4

Cadweld mould, type SSCY4. Tee, 70mm² horizontal splice. Requires 65PLUSF20 weld metal.



08487

CADWELD MOULD PTCY4Y4

Cadweld mould, type PTCY4Y4
2 x 70mm² parallel horizontal
conductors. Requires 200PLUSF20
weld metal.



08488

CADWELD MOULD XBQY4Y4

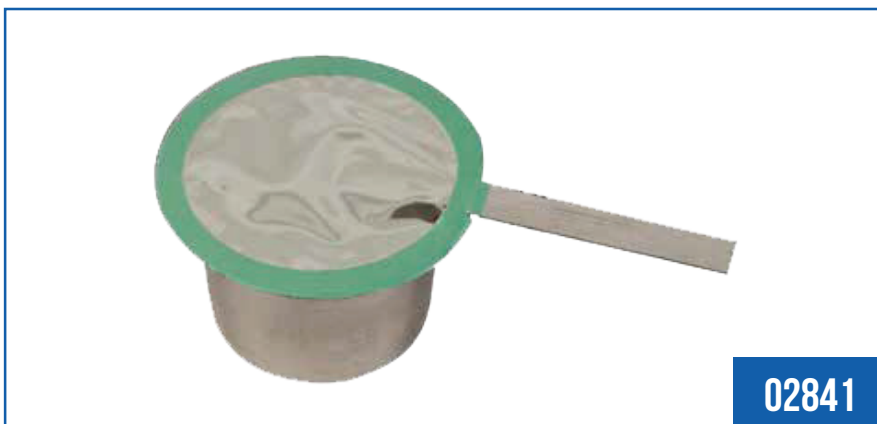
Cadweld mould, type XBQY4Y4
2 x 70mm² crossover horizontal
conductors, lapped and not cut.
Requires 200PLUSF20 weld metal.



08489

CADWELD MOULD TACY4Y4

Cadweld mould, type TACY4Y4
Tee, 70mm² horizontal run and 70mm²
tap connection. Requires 90PLUSF20
weld metal.



02841

F20-65 WELD METAL

Cadweld Plus Nomenclature F20 (Clear Cap) - 65 grammes. Colour Dark Green.
Consists of a tamper proof, disposable, moisture resistant weld metal cup which
incorporates weld metal, disk and ignition source. NB: Requires control unit to
ignite and appropriate mould.



02842

F20-90 WELD METAL

Cadweld Plus Nomenclature F20
(Clear Cap) - 90 grammes. Colour Gray.
NB: Requires control unit to ignite and
appropriate mould.



02843

F20-115 WELD METAL

Nomenclature F20 (Clear Cap) - 115 grammes. Colour Orange. NB: Requires control unit to ignite and appropriate mould.



02844

F20-150 WELD METAL

Cadweld Plus Nomenclature F20 (Clear Cap) - 150 grammes. Colour Dark Blue. NB: Requires control unit to ignite and appropriate mould.



03537

F20-200 WELD METAL

Cadweld Plus Nomenclature F20 (Clear Cap) - 200 grammes. Colour Yellow. Consists of a tamper proof, disposable, moisture resistant weld metal cup which incorporates weld metal, disk and ignition source. NB: Requires control unit to ignite and appropriate mould.



04943

F20-250 WELD METAL

Cadweld Plus Nomenclature F20 (Clear Cap) - 250 grammes. Colour Purple. Consists of a tamper proof, disposable, moisture resistant weld metal cup which incorporates weld metal, disk and ignition source. NB: Requires control unit to ignite and appropriate mould.



06927

F20-500

Cadweld Plus Nomenclature F20 (Clear Cap) - 500 grammes. Colour Light Brown. NB: Requires control unit to ignite and appropriate mould.



07516

DIGITAL EARTH TESTER

Earth resistivity tester, 2, 3 or 4 point. Digital display, comes with carry case, basic lead and spike kit and terminal bare wire adaptors.



05246

MACHINE DRIVING HEAD

Machine driving head for tapered extendable earth rods, suits Kango 900/950.



04647

MACHINE DRIVING HEAD

Machine driving head for flush coupled swaged end earth rods. Suit Kango 900/950



03970

EARTH RESISTANCE TESTER

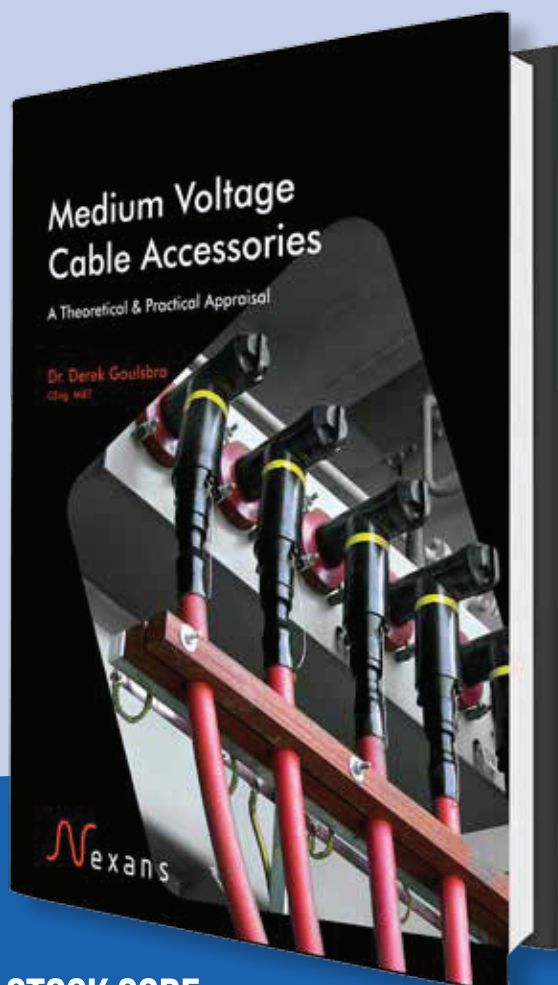
Digital earth resistance tester. Comes in a box with shoulder strap, includes batteries and leads.



07140

EARTH RESISTANCE TESTER

2, 3 and 4-point with Dataview® Software - model 6472. Measures ground impedance at frequencies up to 5kHz to test lightning strike protection. Uses the 2-clamp method (no auxiliary rods needed) and optional current probes. Automatic report generation including the fall-of-potential plot.



STOCK CODE:
08484

MEDIUM VOLTAGE CABLE ACCESSORIES

DR DEREK GOULSBRA CENG MIET

This book is a detailed look at medium voltage cable accessories which will be of value to jointers and engineers alike.

In order to understand the workings and failure modes of the accessories, a section on electrical breakdown of air and solids and a combination of the two is presented.

This is followed by a practical consideration of cable preparation using present day techniques and tools prior to installing the accessory.

Terminations, separable connectors, joints and associated components are examined in detail with explanations of the various technologies employed. Finally, examples of failures are presented with explanations of how these could have been avoided.

ABOUT THE AUTHOR

Derek Goulsbra has over thirty years experience working in the field of cable accessories having been heavily involved in product development, failure analysis and engineer and jointer training.



Level 2 ASP list:

Are you just starting out as a Level 2 ASP?

Our recommended tools list is a great guide for the essential items that should be in every ASP's arsenal. For a list of the accompanying safety gear required by ASPs and electrical contractors, take a look at our Safety Link brochure.

1 TEST LAMP



02858

2 LINEMAN'S SPANNER



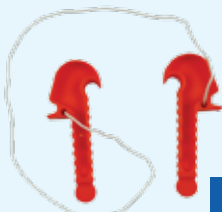
02345

3 SCRATCH BRUSHES



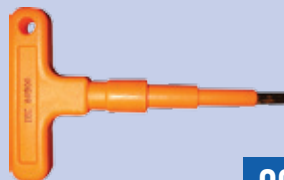
02974
02975

4 ABC CORE SEPARATOR



03301

5 SHEATHED T-BAR



02810

6 D BOLT SPANNER



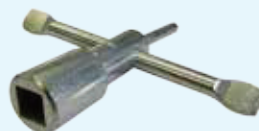
02333

7 ALLEN KEY SPANNER



03848

8 COLUMN KEY



07810

9 PARROT BEAK CUTTERS



02878

10 CABLE CUTTER RATCHET



02131

11 CONDUIT CUTTER



08752

12 1000V SCREWDRIVERS



08822

13 1000V PLIERS



08819

14 1000V CUTTERS



08821

15 MULTI-METER



02576

Our brochures:



Transmission Construction
Endeavour Energy



Pole Mounted Transformer
Endeavour Energy



Pole Mounted Transformer
Essential Energy



Bare Conductor Accessories
Overhead



Insulated Conductor Accessories
Medium Voltage Overhead



Safety Link
Product Catalogue



Kiosk Substation
Ausgrid



Numbers & Labels
Endeavour Energy & Ausgrid



Terminations, Joints & Elbows
Power & Water Corporation



Padmount Substations
Essential Energy



Street Lighting Equipment
Power and Water Corporation



Utility Cables
Various Utilities

At All Round Supplies, we have more than fifteen years' experience in keeping up with the changing standards of Australian utilities. Our unique set of catalogues reflects the wealth of knowledge we've gained through years of experience in the supply of electrical infrastructure materials.

These industry specific directories simplify the process of identifying and ordering the correct products, whether you're working in a utility, private, mining, industrial, solar or rail project.

Catalogues are available on request by speaking to your account manager or by contacting your nearest branch on 1300 087 579.

All Round Supplies
13 Progress Circuit,
Prestons, NSW, 2170

P 1300 087 579
E sales@ars.com.au
W ars.com.au



**All Round
Supplies®**