

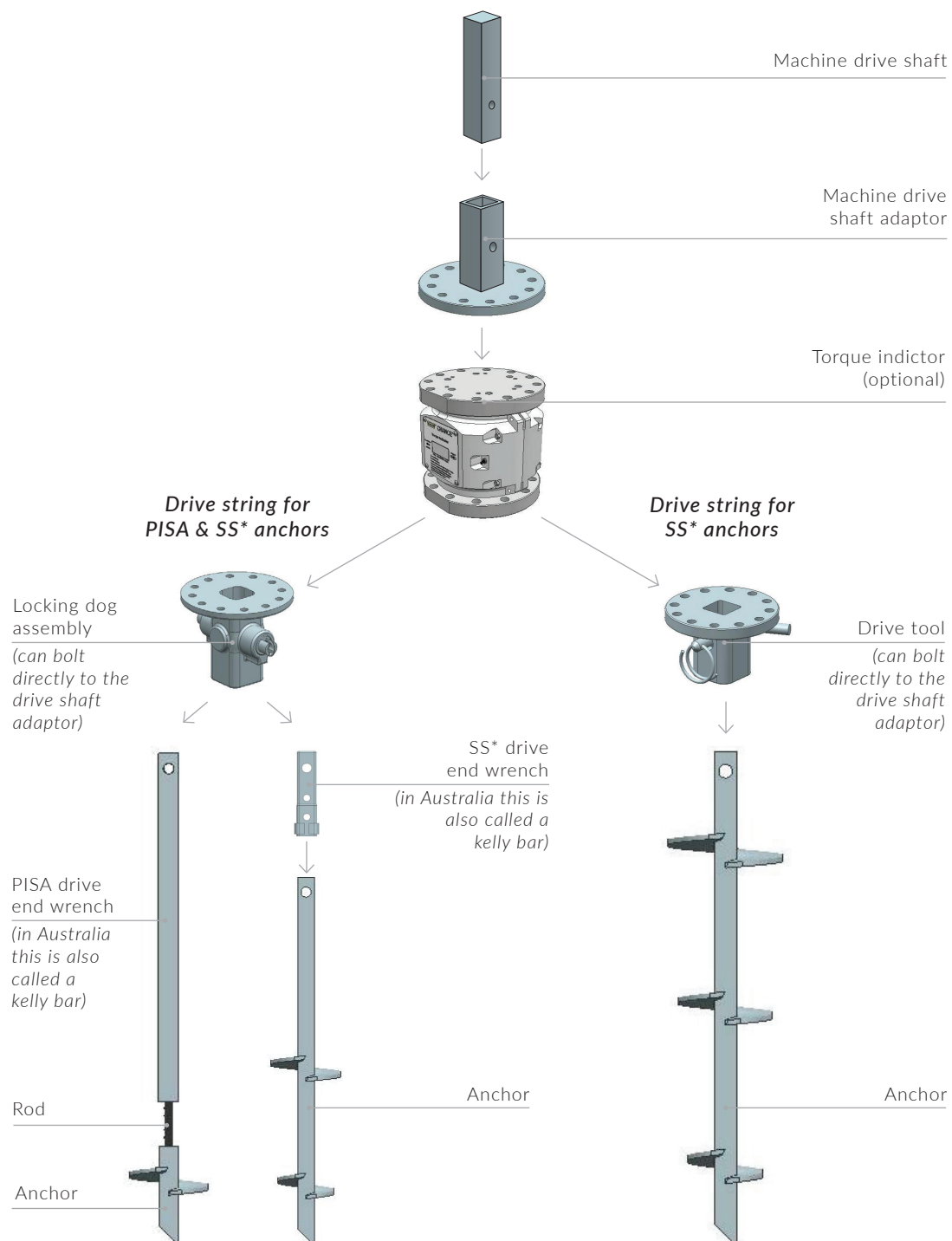
All Round Supplies

Power-Installed Screw Anchors

Drive strings:

Typical screw anchor drive strings.

Please contact us for more information regarding square-section (SS) screw anchors.



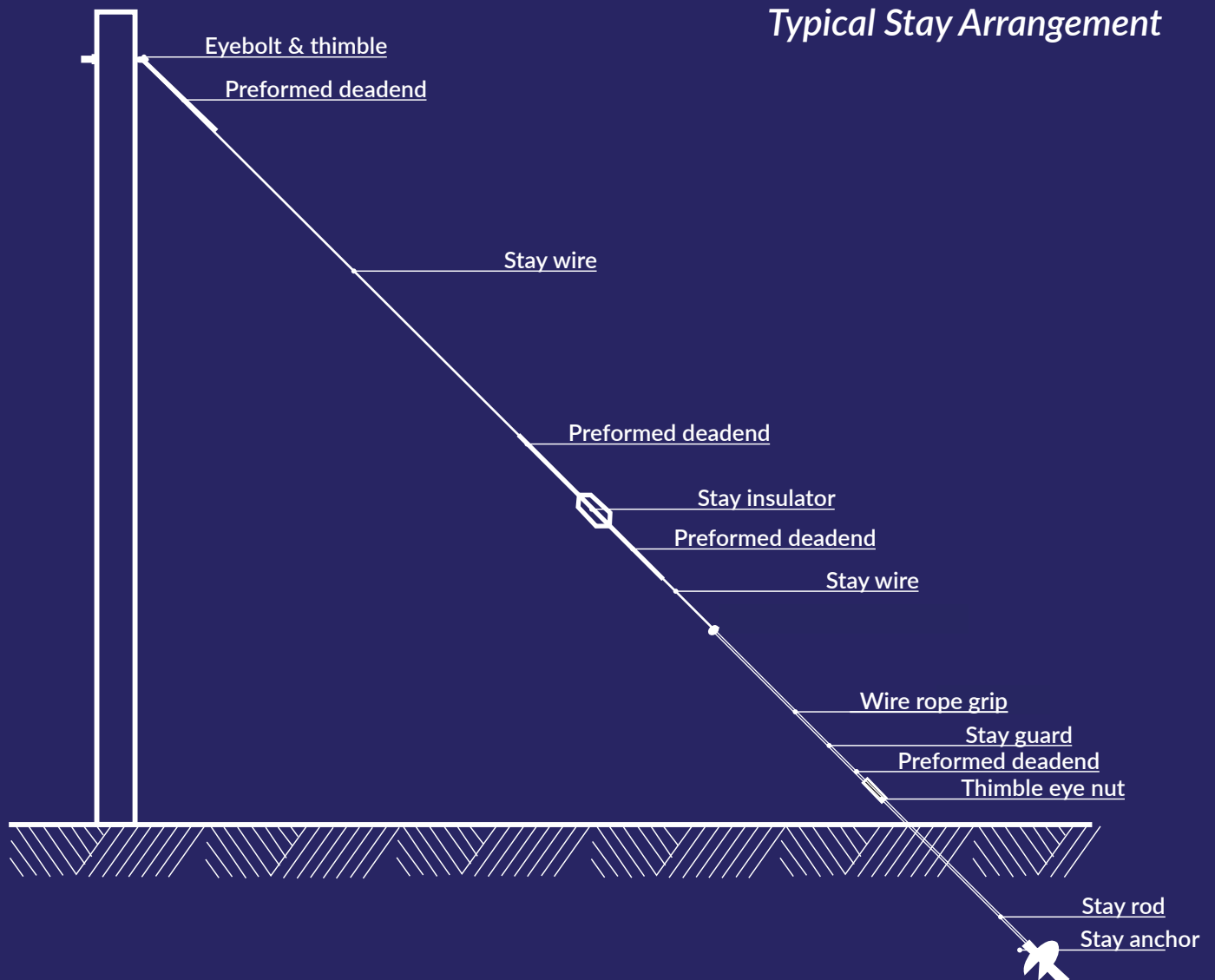
About us

We are All Round Supplies, your one-stop shop for electrical infrastructure products.

With branches in Melbourne and Sydney, we can proudly supply all of the items you need for your next job, exactly when you need them.

One of the areas we specialise in are screw anchors and drive string components. This brochure shows all of the items for the most typical orders that we supply, but there are many more items we can order in if required.

Typical Stay Arrangement



Screw anchors:



Single Helix – Internal Drive

2¼" (57mm) hub, M24 tap

Size	ARS Code
150mm / 6"	04409
200mm / 8"	09627
200mm / 8"	03681
250mm / 10"	09367
250mm / 10"	03752
300mm / 12"	09368
300mm / 12"	03743
350mm / 14"	09369
350mm / 14"	04010



Single Helix – External Drive

2¾" (35mm) hub, M24 tap

Size	ARS Code
200mm / 8"	04620
250mm / 10"	09628
250mm / 10"	09628*
300mm / 12"	09370

*Not an M24 tap (imperial size)



Double Helix – External Drive

1¾" (35mm) hub, M24 tap

Size	ARS Code
100mm / 4"	04605
100mm / 4"	09629
250mm / 10"	09371
250mm / 10"	04478

Components:



Thimble Eye Nut

Single eye 1 wire 09630

Twineye 2 wire 09419



Stay Rod Coupler

Size M24

09377



Stay Rod

M24 x 2140mm

03682

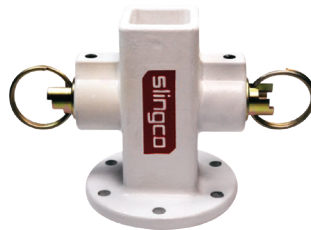
Galvanised steel



Machine Drive Shaft Adaptor

Provides a connection point to borer drive shaft. 75 x 75

ARS Code: 09372



Locking dog assembly

Drive lock assembly for drive wrench. 8.35kgs

ARS Code: 10293



Optional torque indicator

Displays the applied torque level

ARS Code: TBA



Orange drive end wrench, 2134mm

Hub 57mm, Shaft 35mm, Weight 28.85kg

ARS Code: 10292



Yellow drive end wrench, 2134mm

Hub 63.5mm, Shaft 38mm, Weight 28.85kg

ARS Code: 10291

All Round Supplies

13 Progress Circuit,
Prestons, NSW, 2170

4/433 Hammond Road,
Dandenong South, VIC, 3175

P 1300 087 579

E sales@ars.com.au

W ars.com.au



**All Round
Supplies®**