



All Round  
Supplies®

Image: ausgrid.flickr

# Specialised Utility-Workers' Tools



# TOOLING CATALOGUE

All Round Supplies is your one-stop specialist distributor for all the materials an electrical contractor needs. We carry an extensive range of utility-approved products for use on electrical infrastructure networks across Australia.

Our range of products make it easy for you to complete your overhead or underground project saving you time and money. We are committed to providing you with the best products, brands and service from many of the world's leading manufacturers.

All Round Supplies has a branch network covering Sydney (Prestons), Nowra and Newcastle (Beresfield), each staffed with industry specialists that understand your needs and are waiting to help.



# TABLE OF CONTENTS

LV ABC tools	5
Cutting tools	8
Knives	9
Insulated tools	11
Linesman's tools	14
Hotstick & attachments	16
Tool bags	17
Cable preparation tools	18
Stages of cable preparation	19
Tension & stringing	24
Test & measuring	26
URD tools	29
Pit lid lifters	30
Crimping tools	32
Crimping dies	34
Cable laying tools	35
Mandrels & cleaners	36
Cable rolling guides	37
Earthing tools	38
L2 ASP tools list	42



Image: flickr.com/ausgrid

# THE WORLD'S LEADING BRANDS

You don't compromise on the quality of your work, so we don't compromise on the quality of our tools.

We stock only the highest quality, industry-specialised tools from the leading brands and manufacturers in Australia and around the world.

With over 15 years' experience supplying materials to Australia's power distribution industry, we know exactly what you'll need for each specific job.

Get the professional, industry-specialised tools you need, when you need them, and always at competitive prices.



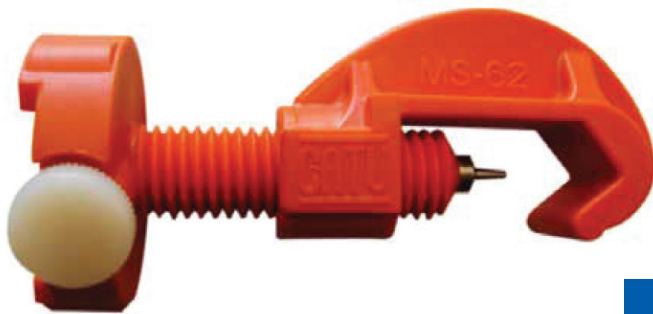




# LV ABC TOOLS

A selection of the essential items used in the installation of connectors on low voltage ABC conductors.

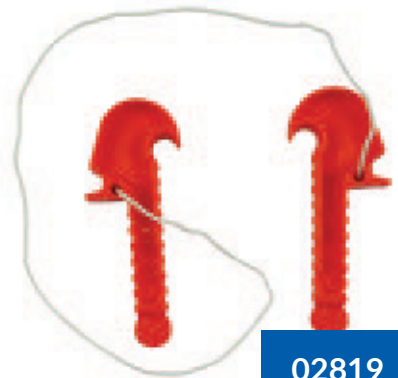
In this category you'll find the tools required when working on overhead LV ABC conductors, including core separating tools for prying apart the individual phase conductors of the cable, linesman's ratchet spanners used to install IPC connectors and split bolts on overhead lines and submersible fuses in underground applications, as well as a range of wire grips.



03302

#### Insulated Cable Test Point

Reusable and insulated, the cable test point is suitable for cable ranges up to 150mm<sup>2</sup>.



02819

#### Core Separator LV ABC to 4C 95

Core separation tool suitable for low voltage ABC up to and including 4-core 95mm<sup>2</sup>. Comes as two tools joined by rope.



02345

#### 2-Way Ratchet Spanner - Long

Ratchet spanner to install insulated piercing connectors (IPCs, TTDs and NTDs) used by linesmen. Reversible ratchet (6 point double-sided hex) with 13mm across flat on one side & 17mm across flat on the other. Overall length 267mm.



08417

#### 2-Way Ratchet Spanner - Short

Ratchet spanner to install insulated piercing connectors. Reversible ratchet with short handle 197mm.



04367

#### LV ABC Grip - 4x95 - 4x150 ABC

Come-along for conductor range 4x95mm<sup>2</sup> to 4x150mm<sup>2</sup> LV ABC cable. Aluminium clamping blocks, painted steel frame, galvanised steel shackle. Weight 6.3kg.



04925

#### Come Along 2x16 - 4x35 ABC

Come-along for 2 and 4-core LV ABC cable. Cable OD range 8 to 25mm, eye opening 27x40mm. WLL 5.0kN, weight 0.9kg.





**08451**

#### **Come Along 4x35 - 4x70 ABC**

Come-along for 4-core LV ABC cable. Cable OD Range 16 to 34mm, eye opening 30x45mm. WLL 12.0kN, weight 2.1kg.



**05487**

#### **Service Cable Tensioner**

Service cable tensioner, utilised for tensioning of LV ABC service cables. Able to be locked when loaded, it utilises a compound pulley system with a mechanical advantage of 3. Extended length of 2 metres, working load 400kg.



**08467**

#### **Come Along 4x95 - 4x150 ABC**

Come-along for 4-core LV ABC cable. Cable OD Range 28 to 45mm, eye opening 30x45mm. WLL 18.0kN, weight 3.1kg.



# CUTTING TOOLS

A comprehensive selection of tools and knives for cutting through cables, conduit, insulation and more.

From small and medium hand-held ratchet cutters to heavy-duty hydraulic and battery-operated cutters, we've got the tools to get you through any sized cable or PVC conduit. We also stock a great range of knives - many with insulated handles - to make short work of outer sheaths, insulation, wires, harness ties, gauge wires and electrical tape.





02131

#### Cable Cutter Ratchet 400mm<sup>2</sup>

Gear driven ratchet cable cutter, forged construction and cuts up to 400mm<sup>2</sup> single core copper conductors (not suitable for steel). Length 260mm, weight 1.1kg.



04476

#### Cable Cutter Ratchet 300mm<sup>2</sup>

Hand cable cutter ratchet for annealed copper and aluminium conductors up to 300mm<sup>2</sup> (maximum 32mm outside diameter).



04477

#### 400mm Cable Cutter Ratchet

Cable cutter ratchet up to 400mm<sup>2</sup> conductors.



02878

#### Parrot-beak Cable Cutter

Hand operated, parrot-beak style cutter for cable range 6mm<sup>2</sup> to 70mm<sup>2</sup> cables. Length 240mm.



03851

#### 240mm Parrot-beak Cutter

Hand operated parrot beak style cutter for up to 240mm<sup>2</sup> cables.



06286

#### Battery Cable Cutter

Battery operated cable cutter for non ferrous cables up to 50mm in diameter. Weight 2.5kg. Comes with battery, charger and carry case.



08752

#### Conduit Cutter

Ratchet action conduit cutter/shear for cutting PVC conduit up to 63mm diameter. Has 'V' shaped blade to pierce tube for ease of cutting.



05628

#### Wooden Cable Knife

Cable knife with a fixed blade and wood handle. 175mm overall length.



08473

#### 159mm Splicer's Knife

Splicer's knife used for splicing wire, cutting harness ties, medium gauge wires, electrical tape and stripping insulation. Tough forged steel and double-plated chrome over nickel to prevent rust and corrosion. Coping-style blade with protective blade sheath and cushioned handle for ease of use & safety



06838

#### Hacking Knife

Hacking knife with 115mm blade.



03182

#### Kevlar String

Insulation cutting Kevlar string for plastic insulated cables. 2 metres in length, yellow in colour





# INSULATED TOOLS

1000V separators, pliers, cutters, screwdrivers and knives for use by electrician's and electrical contractors when working on live conductors.

Standard tools do not provide electrician's with any protection from electrical shock, and should only be used on un-energized electrical equipment. When carrying out electrical work on exposed energized electrical conductors or circuit parts, insulated tools should always be used. These tools are manufactured to strict standards. A tested and fully approved 1000 volt tool can protect the user against voltages up to 1000 volts.



5mm allen key driver with insulated 'T' shaped handle. Suitable for popular tee joint style ring connectors and terminal blocks.



Cable core twister for 3-core  
185mm<sup>2</sup> to 300mm<sup>2</sup> bare,  
insulated.



Insulated core separator & wedge, ideal for multicore cables when a standard wedge cannot be employed. Made from moulded nylon with a hook-type end. Length 262mm, weight 87 grams.



Cable core twister for 4-core  
185mm<sup>2</sup> to 240mm<sup>2</sup>, insulated.



Holding tool for shearoff/mechanical lugs/connectors. Used to avoid twisting while tightening shearoff lugs and/or connectors



Insulated core wedge designed to aid the separation of cores during jointing. Has thumb and finger grip assists.





08822

#### 1000V Screwdriver Set

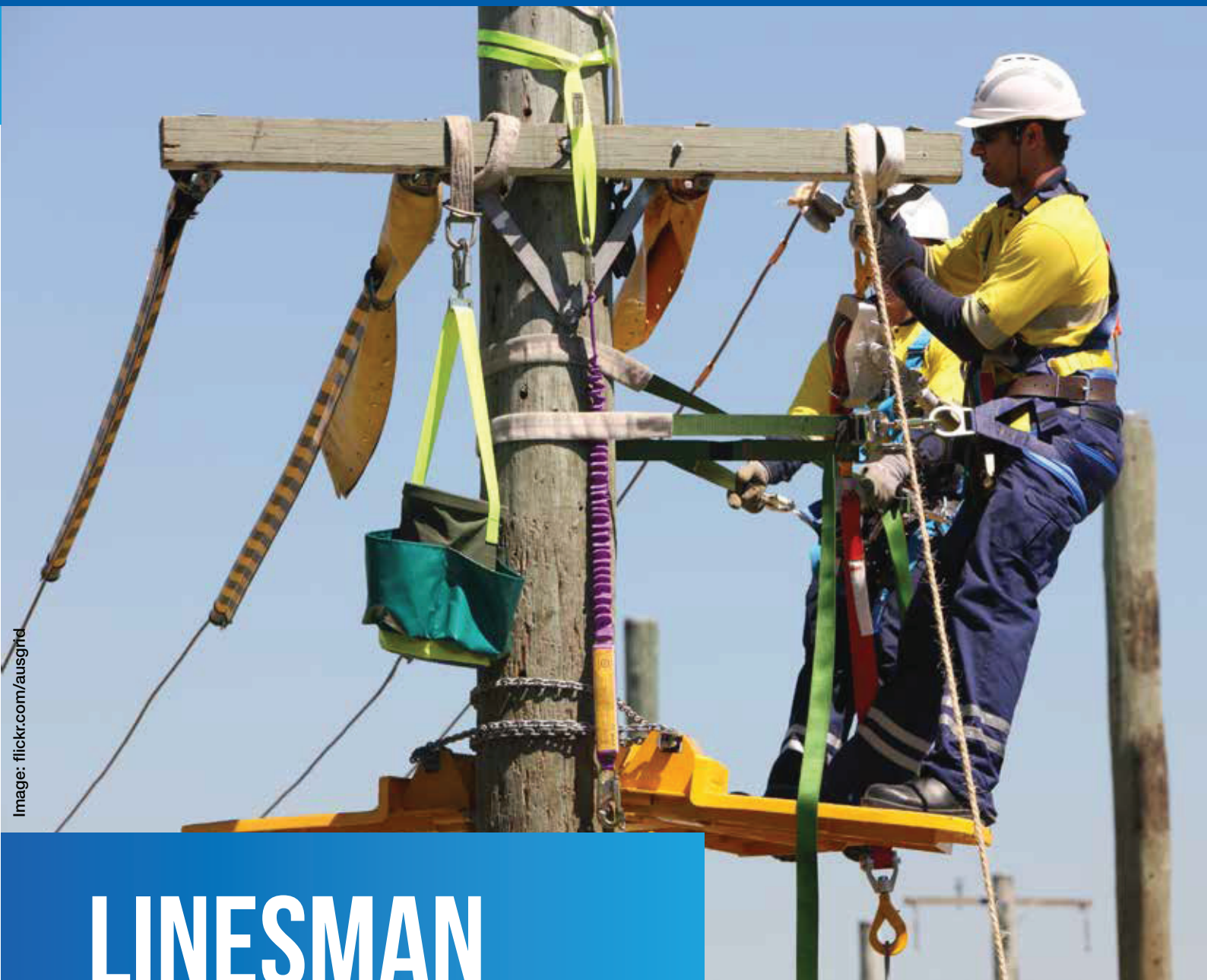
Insulated (IEC 60900:2004)- SD8SET. Contains Slotted: 2.5x80, 4.0x100, 6.5x150, Tester 140, Phillips 1x100, PH 2x100, Pozidrive 1x100, 2x100.



03158

#### Coring Knife

Coring knife with curved blade and insulated handle.



# LINESMAN TOOLS

A huge range of tools and accessories for the electrical linesman.

From ratchet and line tap spanners for installing IPC, HSC and TOC connectors and split bolts, to insulation strippers, core separators, pole steps, AMPACT components, hot stick components, come alongs or 'wire grips', canvas tool buckets and other accessories, this section covers everything required by the electrical linesman.



02346

#### Insulation Stripper HV ABC/CCT

Cable stripping tool for HV ABC/CCT cable oversheaths and cable insulation from 1.5 to 5.5mm. Cable range from 12 – 32mm. Long life blade and chrome steel components. NB - Not designed to strip mid-span conductor.



03142

#### 4-Way Line Tap Spanner

4-way line tap spanner to suit B22, B24, B25 and B26 split bolts/line taps



03733

#### Linesman's 4-Way Ratchet Spanner

Reversible ratchet (6 point hex) with 17mm, 19mm, 24mm & 30mm across flat sides, for M10, M12, M16 & M20 bolts.



02345

#### 2-Way Ratchet Spanner - Long

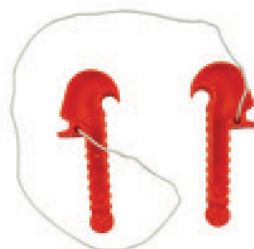
Ratchet spanner to install insulated piercing connectors. Reversible ratchet with long handle 267mm.



08417

#### 2-Way Ratchet Spanner - Short

Ratchet spanner to install insulated piercing connectors. Reversible ratchet with short handle 197mm.



02819

#### Core Separator LV ABC to 4C 95

Core separation tool suitable for low voltage ABC up to and including 4-core 95mm<sup>2</sup>. Comes as two tools joined by rope



04307

#### 150KG Pole Platform

Pole platform for wood poles, 870mm long x 440mm wide. 150kg Working Load Limit.





07876

#### J Hook Driver

For installing J-hooks into timber poles. Comes with the ½ inch square drive, spring loaded ball so hook snaps into place.



07142

#### 12m Telescopic Hotstick

Triangular operating and measuring telescopic stick. 12m extended length, 1.8m retracted length. Supplied with storage bag.



05006

#### Service Fuse Puller - Hotstick

House service fuse puller - pigtail type. 'Sunrise' universal attachment for hotstick.



05460

#### ABS Operating Key - Hotstick

ABS operating key. 'Sunrise' attachment for hotstick.



07936

#### Disconnect Hook - Hotstick

Disconnect hook, 'sunrise' universal attachment for hotstick.



08093

#### PESF Flag Removal

PESF flag removal. 'Sunrise' universal attachment for hotstick.



08615

#### Linesman's Oval Tool Bucket

Made from green canvas, the linesman's oval tool bucket has 15 internal pockets and comes with rope and a snap hook. 350mm x 150mm x 250mm.



**08620**

#### Linesman's Round Tool Bucket

Linesman's round tool bucket with 2 external pockets, comes with rope and snap hook. 380mm x 290mm.



**08718**

#### Tool Pouch

Leather tool pouch, 9 pockets with webbing belt



**04925**

#### Come Along 2x16 - 4x35 ABC

Come-along for 2 and 4-core LV ABC cable. Cable OD range 8 to 25mm, eye opening 27x40mm. WLL 5.0kN, weight 0.9kg.



**04367**

#### LV ABC Grip - 4x95 - 4x150 ABC

Come-along for conductor range 4x95mm<sup>2</sup> to 4x150mm<sup>2</sup> LV ABC cable. Aluminium clamping blocks, painted steel frame, galvanised steel shackle. Weight 6.3kg.



**08451**

#### Come Along 4x35 - 4x70 ABC

Come-along for 4-core LV ABC cable. Cable OD Range 16 to 34mm, eye opening 30x45mm. WLL 12.0kN, weight 2.1kg.



**08467**

#### Come Along 4x95 - 4x150 ABC

Come-along for 4-core LV ABC cable. Cable OD Range 28 to 45mm, eye opening 30x45mm. WLL 18.0kN, weight 3.1kg.



**05487**

#### Service Cable Tensioner

Locked when loaded. Compound pulley system with mechanical advantage of 3. Extended length of 2 metres, working load 400kg.



**02641**

#### Pole Dressing Stand

Pole dressing stand Type 3. 860mm tall, Safe Working Load 2500kg Manufactured to Australian Standards. Certificate C10920.01.



# CABLE PREP TOOLS

A full product line of tools for each specific process involved in correctly preparing power cables, including stripping, scoring, cutting and cleaning.

With a focus on performance, reliability and ease of use, our range of cable preparation tools covers each aspect of splicing and terminating a cable, from the accurate stripping of outer sheaths, the scoring and cutting of semi-con and the removal of insulation and other materials to produce a consistent, uniform preparation of cable ends.



# STAGES OF CABLE PREPARATION:

## SHEATH



TOOLS REQUIRED



## SEMICON



TOOLS REQUIRED



## INSULATION



TOOLS REQUIRED





08479

#### Adjustable Jacket Slitter

Adjustable Jacket Slitter (AJS) for slitting cable coverings ranging from soft insulated jackets to high density HDPE up to 6.3mm thick.



02094

#### HDPE/PVC Sheath Stripper

Hand held sheath stripper for HDPE/PVC – cuts any shape and any direction, no limit to diameter or length. All metal multi-grip handle can be gripped outside or inside, right or left hand, blade has blunt mushroom head which stops damage to inner core.



08485

#### Adjustable Cable End Stripper

Spring-loaded trigger-action jaws, removes outer jacket or insulating material. Cable OD 12.7mm - 63.5mm



02075

#### Plastic Insulation Stripper

Plastic insulation stripper (PVC or HD Polythene sheathed CU or AL cables) with outside diameter 14 to 40mm, 11 & 22kV XLPE.



02634

#### Replacement Blade

Replacement blade for sheath stripper HDPE/PVC.



03548

#### Outer Sheath Stripper Ratchet

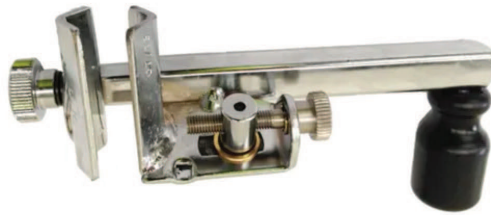
Tool for stripping the outer sheath from all MV and LV cables. Designed to strip up to 5mm (adjustable) outer sheaths with minimum 25mm outside diameters (longitudinal and circular cuts). Strips without damaging conductor or screen. Designed to strip both ends and in the middle.



08483

#### Insulation Chamfering

Chamfering tool for removing sharp edges at cut-off edges of XLPE cable insulation, prevents damage to slip-on accessories and aids installation.



**02346**

#### Insulation Stripper HV ABC/CCT

Cable stripping tool for HV ABC/CCT cable oversheaths and cable insulation from 1.5 to 5.5mm. Cable range from 12–32mm.



**03098**

#### Replacement Blade

Replacement blade for ABC/CCT sheath stripping tool (02346).



**07315**

#### Insulation Chamfer Cutter

Insulation chamfer cutter for medium voltage cables with an insulation diameter of 15–60mm



**08475**

#### Semi-Con Removal Pliers

Long flat-nose pliers designed for the removal of semi-con. The pliers are made from drop forged, hardened & tempered steel alloy, and are paired with soft ribbed grips for maximum comfort & durability. Length 152mm



**03114**

#### 0.4mm XLPE Screen Scorer

Screen scoring tool for 0.4mm XLPE



**02074**

#### 0.6mm XLPE Screen Scorer

Screen scoring tool for 0.6mm XLPE



**08482**

#### 8-45mm Semi-Con Scorer

Capable of longitudinal, spiral & calibrated square cuts. Blade adjustment from 0–4mm depth. Cable range 8mm–45mm.





**04361**

#### **Semi-Con Scorer**

AV6410 semi-con scorer



**02084**

#### **0.6mm XLPE Screen Scorer**

Semicon scorer 25mm<sup>2</sup> to 500mm<sup>2</sup> (adjustable blade depth).



**03109**

#### **8-45mm Semi-Con Scorer**

Holding tool for shearoff/mechanical lugs/connectors. Used to avoid twisting while tightening shearoff lugs and/or connectors



**08477**

#### **0.4mm XLPE Screen Scorer**

Holding tool for shearoff/mechanical lugs/connectors. Used to avoid twisting while tightening shearoff lugs and/or connectors



**03148**

#### **0.6mm XLPE Screen Scorer**

Gas torch assembly, includes 38mm burner head, handle and 5m hose.



**06960**

#### **8-45mm Semi-Con Scorer**

Constant pressure regulator for all FH-1630 hoses. For propane gas tanks with a capacity of 5kg to 11kg. Gasflow: max 6kg/h



**08473**

#### **0.4mm XLPE Screen Scorer**

Splicer's knife used for splicing wire, cutting harness ties, medium gauge wires, electrical tape and stripping insulation



**05628**

#### **0.6mm XLPE Screen Scorer**

Cable knife with a fixed blade and wood handle. 175mm overall length



**03158**

#### **8-45mm Semi-Con Scorer**

Coring knife with curved blade and insulated handle



**06838**

#### **Hacking Knife**

Hacking knife with 115mm blade.



**07598**

#### **KAM Swivel Blade Stripper**

Swivel blade stripping tool, cable range 4–28mm, with knife



**02609**

#### **Insulated Miniwedge**

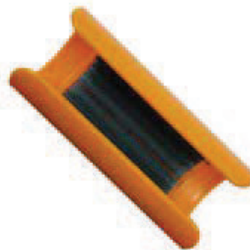
Aids separation of cores during jointing. Length 160mm, weight 52 grams.



**02608**

#### **Insulated Maxiwedge**

Insulated core separator and wedge. Length 262mm, weight 87 grams.



**02975**

#### **Copper Scratch Brush**

Orange scratch brush for copper conductors



**02974**

#### **Aluminium Scratch Brush**

Blue scratch brush for aluminium conductors.



**02691**

#### **Cable Twister 4 Core Sector**

Cable twister to suit 4 core sector cable. Used when undertaking link pillar terminations. Supplied as 1 pair



**02615**

#### **Insulated Cable Core Twister**

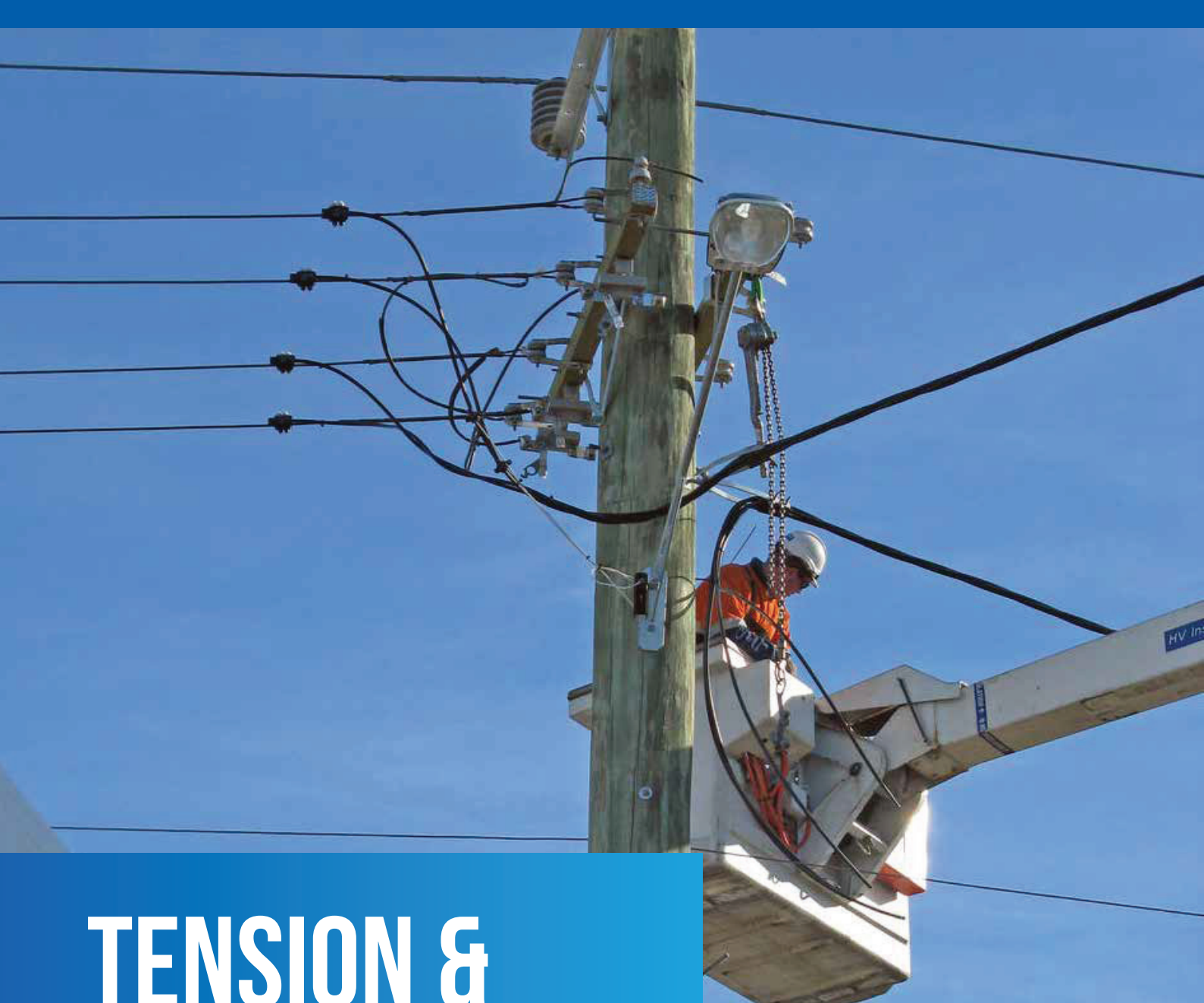
4 core 185mm<sup>2</sup> insulated to 240mm<sup>2</sup> insulated. Insulated tool



**02616**

#### **3C Cable Core Twister**

Cable Core Twister, 3 Core 185mm<sup>2</sup> to 300mm<sup>2</sup> Bare. Insulated tool



# TENSION & STRINGING

Grips and rollers required when using the tension method to install overhead conductors.

The tension method involves the conductor being pulled into position under tension. This is achieved by running a synthetic pulling line between a winch and a bullwheel tensioner threaded with the conductor. The pulling line is attached to the conductor using a wire grip (also referred to as a come-along, suitcase or four-bolt) and pulled through stringing rollers (or running sheaves) until the end reaches the winch, maintaining enough tension to keep the conductor clear of the ground and other obstructions.





**05487**

#### Service Cable Tensioner

Locked when loaded. Compound pulley system with mechanical advantage of 3. Extended length of 2 metres, working load 400kg.



**04367**

#### LV ABC Grip

Come-along for conductor range 4x95mm<sup>2</sup> to 4x150mm<sup>2</sup> LV ABC cable. Weight 6.3kg.



**04925**

#### Come Along 2x16 - 4x35 ABC

Come-along for 2 and 4-core LV ABC cable. Cable OD range 8 to 25mm, eye opening 27x40mm. WLL 5.0kN, weight 0.9kg.



**08451**

#### Come Along 4x35 - 4x70 ABC

Come-along for 4-core LV ABC cable. Cable OD Range 16 to 34mm, eye opening 30x45mm. WLL 12.0kN, weight 2.1kg.



**08467**

#### Come Along 4x95 - 4x150 ABC

Come-along for 4-core LV ABC cable. Cable OD Range 28 to 45mm, eye opening 30x45mm. WLL 18.0kN, weight 3.1kg.



**04391**

#### Come Along 5-25 AL/CU

Come along for 5 - 25mm diameter bare aluminium or copper cable. SWL 2.0T (20kN), weight 1.8kg.



Image: flickr.com/ausgrid

# TEST & MEASURING

We stock a large selection of electrical testing equipment, including test lamps, voltage testers, detectors, multimeters, neutral supply and load testers, phase rotation testers and more.

Electronic test and measurement equipment is used to create signals and capture responses from electronic devices and systems. The use of electrical test and measurement equipment is essential for verifying the functionality of the electrical system, or for proving faults which can be traced and identified.



02858

### 240/415V Test Lamp

240/415V AC and DC, Cat IV 300V, certified and tested to AS 61010:2003, fused: 2A (50kA @ 500V AC and 20kA @ 500V DC). 25W bulb, specially designed locking fitting to prevent accidental disconnection during use. 3 metre lead with detachable peg clip/chisel probe and 6.5 x 1.5 mm rounded flat probe



07590

### Test Lamp Probe

Test lamp probe with peg clip and 250mm lead



07814

### Test Spool

Test spool, comes with 10m cable and Peg probe for test lamp. shrouded banana plug



04606

### Test Lamp Tester

Test lamp tester, 25W for TL2 and TL3 test lamps. Comes with audible and visual indication as well as belt clip



04744

### Clear Pilot Lamp

25watt 240V SES clear pilot lamp



08783

### Single Phase Load Tester

The Desmo LT240A15 CAT IV 600V single phase load tester, used as an electrical load on kWh power meters when testing to ensure the correct operation and functionality of the meters. Incorporates fused probes with silicon leads and is housed in a compact body. It is protected by an automatic thermal cut-out switch



02576

### Multimeter Digital True RMS

Multimeter digital true RMS on AC Volts & current. Auto ranging, input protection 600V





08757

### Neutral & Supply Tester

The Desmo LT240A15 CAT IV 600V single phase load tester, used as an electrical load on kWh power meters when testing to ensure the correct operation and functionality of the meters. Incorporates fused probes with silicon leads and is housed in a compact body. It is protected by an automatic thermal cut-out switch



03850

### Meter Phase Rotation Tester

Input voltage 100 to 600V AC, frequency range 45 to 70Hz. Safety and Compliance EN61010 Cat III 500V. No moving mechanical parts. This unit gives phase and sequence indication. It will identify 3 phases, their sequence and no phase. Used to test supply when installing motors, pumps, conveyor lines, drives, etc



02577

### Meter Phase Rotation Tester

Input Voltage 200 to 600V AC, frequency range 50 to 60Hz, with colour coded alligator clips and HRC fuses. Safety and compliance EN61010 Cat III 600V. Designed for line workers with fused leads to provide overload protection. The leads are double insulated. The unit is supplied with a soft vinyl case



# URD TOOLS

A range of tools used in underground residential development work.

Our range of URD tools includes allen keys, spanners and cable twisters for mains pillar terminations, a wide range of pit lid lifters, cable tie tensioners, fuse pullers and duct seal inflation tools for URD connections.



02333

### D-Bolt Spanner

T-bar 'D' bolt spanner, 90cm long



02810

### 5mm Insulated Allen Key

Insulated T-shaped handle, 5mm allen key driver. Suitable for popular tee joint style ring connectors and terminal blocks



03848

### Button Bolt Spanner

Allen key/button bolt spanner, 850mm long. Used to undo allen key/button bolts in pillars



03279

### Pit Lid Lifter

Lid lifter single T-Bar type. Metal , painted yellow



07422

### Pit Lid Lifter - Long Handle

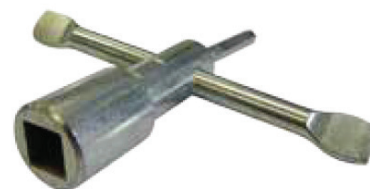
Pit lid lifter with long handle



05953

### Telstra Pit Lid Lifter

Pit lid lifter for Telstra and other class A pits



07810

### Street Light Column Key

Streetlight column key for Endeavour Energy

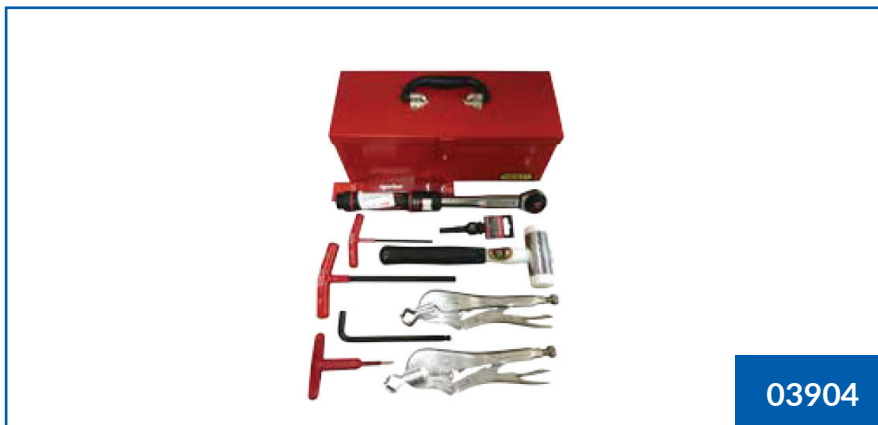




02771

### Street Light Column Key

Band-it tool for 6 – 19mm stainless steel strap/band



03904

### Open Point Link Tool Kit

Consists of tool box, Norbar torque wrench, vice grip cable twisters (1pair), Nylon hammer, 5mm 1000 Knipex insulated tee wrench, Hex T wrench 10mm, Hex T wrench 5mm, Hex socket 1/2" square drive 10mm and Hex key with short drive 10mm



02691

### Cable Twister 4 Core Sector

Cable twister to suit 4 core sector cable. Used when undertaking link pillar terminations. Supplied as 1 pair



02615

### Insulated Cable Core Twister

4 core 185mm<sup>2</sup> insulated to 240mm<sup>2</sup> insulated. Insulated tool



02616

### 3C Cable Core Twister

Cable Core Twister, 3 Core 185mm<sup>2</sup> to 300mm<sup>2</sup> Bare. Insulated tool



04562

### Hex Socket

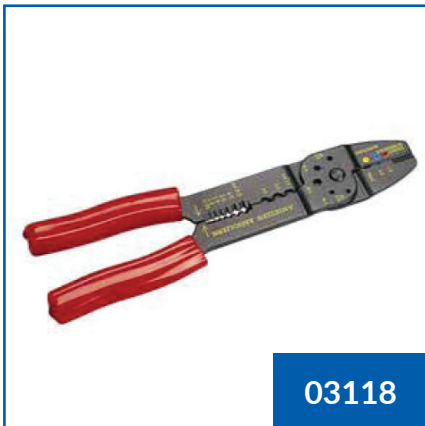
10mm hex impact socket, 1/2 drive



# CRIMPING TOOLS

A comprehensive selection of crimpers and die sets for crimping lugs and links to bare conductor.

From hand held crimpers for bootlace pins and the smallest of lugs, to hydraulic and battery-operated 12-tonne crimpers capable of handling lugs up to 300mm<sup>2</sup>, we've got the right tool for your crimping job. We also stock a selection of individual crimping dies, as well as full sets of both copper and aluminium crimping dies.



**03118**

#### Combination Crimper

For pre-insulated red, blue and yellow terminals. 1.5 to 6mm. Includes cutter, bolt cutter and wire stripper



**04407**

#### Hand Ratchet Crimper

Copper lug hand crimper, ratchet type for 1.5mm<sup>2</sup> – 16mm<sup>2</sup> copper lugs and uninsulated terminals



**06789**

#### Bootlace Pin Crimper

Ratchet hand crimper for 16 – 35mm<sup>2</sup> bootlace pins



**02575**

#### Hexagonal Crimper

Hexagonal crimper for copper lugs 6-120mm<sup>2</sup>. Dies are self contained & rotating. Has over centre action to ensure complete crimp



**07071**

#### 6-300 AL Crimping Die Set

Aluminium hex crimping die set for 12T crimper. Includes aluminium dies for 6-300mm<sup>2</sup>



**07070**

#### 16-300 CU Crimping Die Set

Copper hex crimping die set for 12T crimper. Includes copper dies for 16-300mm<sup>2</sup>



ABC DIES	
<b>25MM ABC HEX CRIMPING DIE</b> Hex crimping die for 12T crimper 25mm <sup>2</sup> ABC (14.0 A/F)	<b>06859</b>
<b>35-95MM ABC HEX CRIMPING DIE</b> Hex crimping die for 12T crimper 35-95mm <sup>2</sup> ABC (17.3 A/F)	<b>06860</b>
<b>95-150MM ABC HEX CRIMPING DIE</b> Hex crimping die for 12T crimper 95-150mm <sup>2</sup> ABC (21.5 A/F)	<b>06861</b>

ALUMINIUM DIES	
<b>240MM 4C AL CRIMPING NEST DIE</b> Hex crimping die for 12T crimper. Indent for 4 core AL sector cables (requires indent die).	<b>06862</b>
<b>240MM 4C AL CRIMPING INDENT DIE</b> Hex crimping die for 12T crimper. Indent for 4 core AL sector cables (requires nest die).	<b>06863</b>
<b>6/35MM AL HEX CRIMPING DIE</b> Hex crimping die for 12T crimper 6-35mm <sup>2</sup> aluminium (9.0 A/F)	<b>06854</b>
<b>50/70MM AL HEX CRIMPING DIE</b> Hex crimping die for 12T crimper 50-70mm <sup>2</sup> aluminium (13.2 A/F)	<b>06855</b>
<b>95/120MM AL HEX CRIMPING DIE</b> Hex crimping die for 12T crimper 95-120mm <sup>2</sup> aluminium (17.3 A/F)	<b>06856</b>
<b>150/185MM AL HEX CRIMPING DIE</b> Hex crimping die for 12T crimper 150-185mm <sup>2</sup> aluminium (22.0 A/F)	<b>06857</b>
<b>240/300MM AL HEX CRIMPING DIE</b> Hex crimping die for 12T crimper 240-300mm <sup>2</sup> aluminium (28.4 A/F)	<b>06858</b>

COPPER DIES	
<b>16MM CU HEX CRIMPING DIE</b> Hex crimping die for 12T crimper 16mm <sup>2</sup> copper (6.3 A/F)	<b>06843</b>
<b>25MM CU HEX CRIMPING DIE</b> Hex crimping die for 12T crimper 25mm <sup>2</sup> copper (7.7 A/F)	<b>06844</b>
<b>35MM CU HEX CRIMPING DIE</b> Hex crimping die for 12T crimper 35mm <sup>2</sup> copper (9.2 A/F)	<b>06845</b>
<b>50MM CU HEX CRIMPING DIE</b> Hex crimping die for 12T crimper 50mm <sup>2</sup> copper (10.4 A/F)	<b>06846</b>
<b>70MM CU HEX CRIMPING DIE</b> Hex crimping die for 12T crimper 70mm <sup>2</sup> copper (11.5 A/F)	<b>06847</b>
<b>95MM CU HEX CRIMPING DIE</b> Hex crimping die for 12T crimper 95mm <sup>2</sup> copper (14.2 A/F)	<b>06848</b>
<b>120MM CU HEX CRIMPING DIE</b> Hex crimping die for 12T crimper 120mm <sup>2</sup> copper (16.5 A/F)	<b>06849</b>
<b>150MM CU HEX CRIMPING DIE</b> Hex crimping die for 12T crimper 150mm <sup>2</sup> copper (18.3 A/F)	<b>06850</b>
<b>185MM CU HEX CRIMPING DIE</b> Hex crimping die for 12T crimper 185mm <sup>2</sup> copper (20.0 A/F)	<b>06851</b>
<b>240MM CU HEX CRIMPING DIE</b> Hex crimping die for 12T crimper 240mm <sup>2</sup> copper (23.1 A/F)	<b>06852</b>
<b>300MM CU HEX CRIMPING DIE</b> Hex crimping die for 12T crimper 300mm <sup>2</sup> copper (26.0 A/F)	<b>06853</b>



# CABLE HANDLING TOOLS

Cable handling equipment for securely gripping and hauling underground cables.

We stock a great range of cable handling tools and equipment to make cable hauling as effortless as possible, including proving mandrels and rubber cleaners for clearing dirt and debris and testing conduit integrity before hauling, high-strength fibreglass rodders for easy insertion of draw lines in ducts and channels, trench rollers and cable guides for guiding and protecting cables while laying and a wide range of other accessories such as stocking grips, rope blowers and line carriers.



**07684**

**40mm Proving Mandrel**

Proving mandrel for 40mm conduit



**06742**

**80mm Proving Mandrel**

Proving mandrel for 80mm conduit



**06061**

**100mm Proving Mandrel**

Proving mandrel for 100mm conduit



**04609**

**125mm Proving Mandrel**

Proving mandrel for 125mm conduit.



**06743**

**150mm Proving Mandrel**

Proving mandrel for 150mm conduit



**07685**

**200mm Proving Mandrel**

Proving mandrel for 200mm conduit



**06629**

**100mm Rubber Cleaner**

Rubber cleaner for 100mm conduit



**05443**

**125mm Rubber Cleaner**

Rubber cleaner for 125mm conduit



**06191**

**Trench Corner Roller**

Trench corner roller





**07957**

#### **9mm Rodder Tool**

Rodder tool, includes dispenser and 250m reel of 9mm diameter fibreglass rod with tracer



**08105**

#### **Line Swivel**

Line swivel, 1.5 diameter, 900lb/40kN



**06117**

#### **125mm Plastic Line Carrier**

125mm plastic line carrier



# EARTHING TOOLS

The Erico Cadweld exothermic welding system and components for reinforcing ground connection joints.

Exothermic welding is used to permanently weld a copper cable to a ground rod. A mould is used to secure the joint, and thermite powder is poured into the mould. Once lit, the powder turns to molten copper, which flows around the joint, creating a perfect electrical connection. If exothermic welding weren't used to reinforce ground connection joints, corrosion and the effects of high currents at mechanically-weak connection points could threaten the effectiveness of the ground path over time, which could result in a serious safety hazard.



02845

#### Cadweld Plus Control Unit

The Cadweld Plus control unit initiates the reaction of the metal crucible. Includes 1.8 metre high temperature control unit lead. Lead connects to ignition strip with purpose designed clip. Battery operated



02791

#### Small Mould Handle Clamp

Cadweld mould handle clamp, used to hold C, E and R price cadweld graphite moulds. Does not include moulds



06944

#### Large Mould Handle Clamp

Cadweld mould handle clamp, used to hold D, F and J price Cadweld graphite moulds. NB: Excludes moulds



04944

#### Soft Brush Cadweld Mould

Soft cleaning brush for Cadweld moulds



08490

#### Cadweld Mould SSCY4

Cadweld mould, type SSCY4. Tee, 70mm<sup>2</sup> horizontal splice. Requires 65PLUSF20 weld metal



08487

#### Cadweld Mould PTCY4Y4

Cadweld mould, type PTCY4Y4 2 x 70mm<sup>2</sup> parallel horizontal conductors. Requires 200PLUSF20 weld metal



08488

#### Cadweld Mould XBQY4Y4

Cadweld mould, type XBQY4Y4 2 x 70mm<sup>2</sup> crossover horizontal conductors, lapped and not cut. Requires 200PLUSF20 weld metal



08489

#### Cadweld Mould TACY4Y4

Cadweld mould, type TACY4Y4 Tee, 70mm<sup>2</sup> horizontal run and 70mm<sup>2</sup> tap connection. Requires 90PLUSF20 weld metal





02841

#### F20-65 Weld Metal

Cadweld Plus Nomenclature F20 (Clear Cap) - 65 grams. Colour Dark Green. Consists of a tamper proof, disposable, moisture resistant weld metal cup which incorporates weld metal, disk and ignition source. NB: Requires control unit to ignite and appropriate mould



02842

#### F20-90 Weld Metal

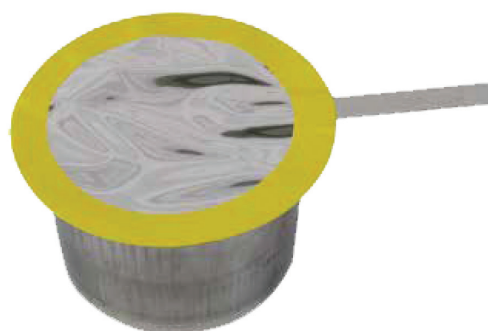
Cadweld Plus Nomenclature F20 (Clear Cap) - 90 grams. Colour Gray. NB: Requires control unit to ignite and appropriate mould



02843

#### F20-115 Weld Metal

Nomenclature F20 (Clear Cap) - 115 grams. Colour Orange. NB: Requires control unit to ignite and appropriate mould.



03537

#### F20-200 Weld Metal

Cadweld Plus Nomenclature F20 (Clear Cap) - 200 grams. Colour Yellow. Consists of a tamper proof, disposable, moisture resistant weld metal cup which incorporates weld metal, disk and ignition source. NB: Requires control unit to ignite and appropriate mould



04943

#### F20-250 Weld Metal

Cadweld Plus Nomenclature F20 (Clear Cap) - 250 grams. Colour Purple. Consists of a tamper proof, disposable, moisture resistant weld metal cup which incorporates weld metal, disk and ignition source. NB: Requires control unit to ignite and appropriate mould



02844

#### F20-150 Weld Metal

Cadweld Plus Nomenclature F20 (Clear Cap) - 150 grams. Colour Dark Blue. NB: Requires control unit to ignite and appropriate mould



06927

#### F20-500 Weld Metal

Cadweld Plus Nomenclature F20 (Clear Cap) - 500 grammes. Colour Light Brown. NB: Requires control unit to ignite and appropriate mould



05246

#### Machine Driving Head

Machine driving head for tapered extendable earth rods, suits Kango 900/950



04647

#### Machine Driving Head

Machine driving head for flush coupled swaged end earth rods. Suits Kango 900/950



03970

#### Earth Resistance Tester

Digital earth resistance tester. Comes in a box with shoulder strap, includes batteries and leads



07140

#### Earth Resistance Tester

2, 3 and 4-point with Dataview® Software - model 6472. Measures ground impedance at frequencies up to 5kHz to test lightning strike protection. Uses the 2-clamp method (no auxiliary rods needed) and optional current probes. Automatic report generation including the fall-of-potential plot

## Level 2 ASP list:

Are you just starting out as a Level 2 ASP?

Our recommended tools list is a great guide for the essential items that should be in every ASP's arsenal. For a list of the accompanying safety gear required by ASPs and electrical contractors, take a look at our Safety Link brochure.

**1 TEST LAMP**



**02858**

**2 LINEMAN'S SPANNER**



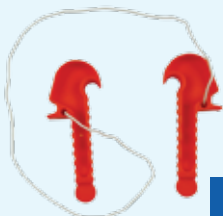
**02345**

**3 SCRATCH BRUSHES**



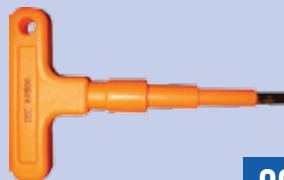
**02974  
02975**

**4 ABC CORE SEPARATOR**



**03301**

**5 SHEATHED T-BAR**



**02810**

**6 D BOLT SPANNER**



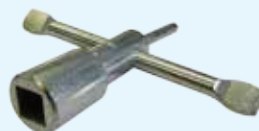
**02333**

**7 ALLEN KEY SPANNER**



**03848**

**8 COLUMN KEY**



**07810**

**9 PARROT BEAK CUTTERS**



**02878**

**10 CABLE CUTTER RATCHET**



**02131**

**11 CONDUIT CUTTER**



**08752**

**12 1000V SCREWDRIVERS**



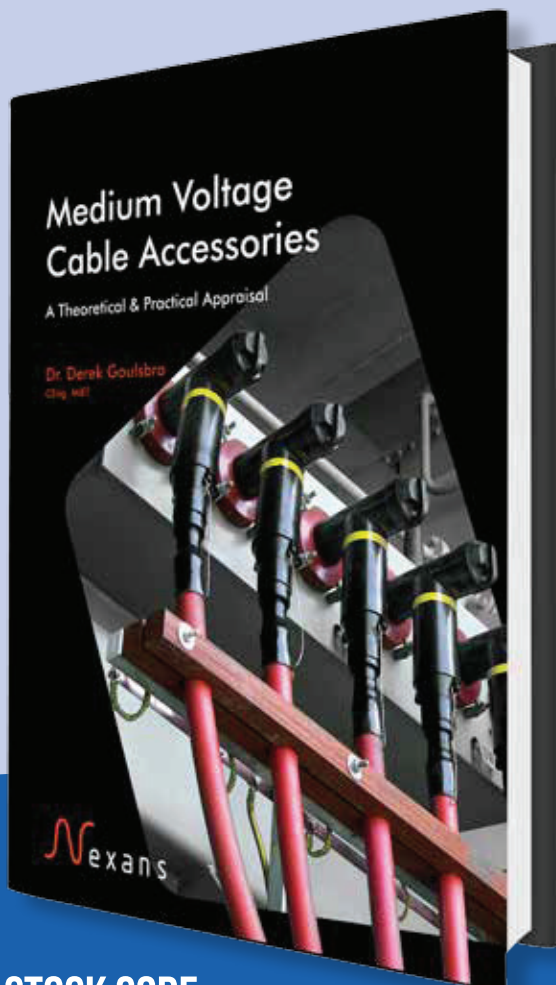
**08822**

**13 MULTI-METER**



**02576**





**STOCK CODE:**  
**08484**

## MEDIUM VOLTAGE CABLE ACCESSORIES

DR DEREK GOULSBRA CENG MIET

This book is a detailed look at medium voltage cable accessories which will be of value to jointers and engineers alike.

In order to understand the workings and failure modes of the accessories, a section on electrical breakdown of air and solids and a combination of the two is presented.

This is followed by a practical consideration of cable preparation using present day techniques and tools prior to installing the accessory.

Terminations, separable connectors, joints and associated components are examined in detail with explanations of the various technologies employed. Finally, examples of failures are presented with explanations of how these could have been avoided.

## ABOUT THE AUTHOR .....

Derek Goulsbra has over thirty years experience working in the field of cable accessories having been heavily involved in product development, failure analysis and engineer and jointer training.



**All Round Supplies**  
13 Progress Circuit,  
Prestons, NSW, 2170

**P** 1300 087 579  
**E** [sales@ars.com.au](mailto:sales@ars.com.au)  
**W** [ars.com.au](http://ars.com.au)



**All Round  
Supplies®**